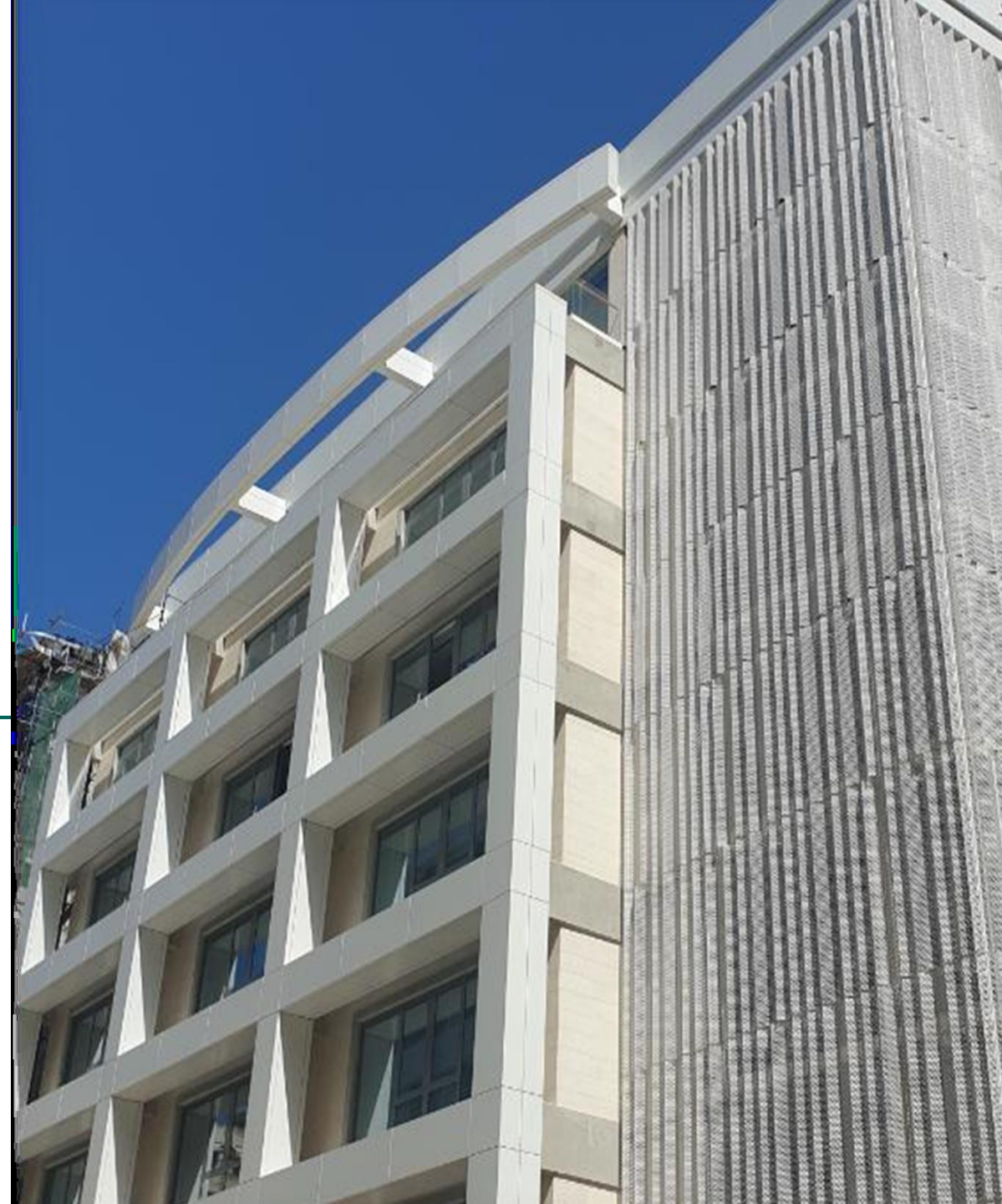


Welcome to **Gezairi Building**

School of Architecture & Design

“A New Home”

January 2022





Building Profile



Just as education around the world continues to evolve and innovate, so do our campuses.

LAU expanded its facilities with the acquisition of the Gezairi Building, a purchased complex that underwent a major renovation completed in September 2021. Located in Sadat Street, it will provide needed spaces aligned with the University's academic programs growth and is the home of the School of Architecture and Design, with a built-up area of **18,932.4 m²** distributed among 13 levels.

This new structure makes the grade for state-of-the-art technology, adherence to detailing, and architecturally significant design. The building is equipped with sustainable system technologies for all trades (Air-conditioning, BMS, LED lighting, IT multimedia, Networking, fire suppression, fire alarm, CCTV and Parking Management System).

Another Sustainable LAU Facility

Gezairi building has already achieved a sustainability [EDGE certification](#) (Excellence for Design and Greater Efficiencies).

It has successfully achieved the following:

- 28% in Energy Savings
- 24% in Water Savings
- 27% Less Embodied Energy in Materials

THIS CERTIFIES THAT
Refurbishment of Gezairi Building Project - Lebanese American University, Beirut Campus
HAS ACHIEVED AN
EDGE CERTIFICATE
CERTIFICATE NUMBER
GP1-LBN-19012910057638

Exemplifying achievement in the following areas:

20%
Energy Savings

30%
Water Savings

26%
Less Embodied Energy in Materials

283.47 tCO₂/year
Operational CO₂ Emissions
71.63 tCO₂/year
Operational CO₂ Savings

DEVELOPED BY
Lebanese American University

CERTIFIED BY
Sintali-SGS

Thomas Saunders
Thomas Saunders, Managing Director
DATE OF ISSUE: 22-OCT-2021

EDGE Excellence In Design For Greater Efficiencies

WORLD BANK GROUP
THE WORLD BANK IFC International Finance Corporation

Sintali
path to a sustainable future

EDGE Excellence In Design For Greater Efficiencies

THIS CERTIFIES THAT
Refurbishment of Gezairi Building Project - Lebanese American University, Beirut Campus
LAU
Ras Beirut
Beirut,
Lebanon

DEVELOPED BY
Lebanese American University

HAS ACHIEVED AN
EDGE CERTIFICATE

CERTIFICATE NUMBER
GP1-LBN-19012910057638

WAS AUDITED BY
Noelia Garcia
EDGE Software Version: v2.1.1

CERTIFIED BY
Sintali-SGS

Thomas Saunders
Thomas Saunders, Managing Director

Sintali
path to a sustainable future

DATE OF ISSUE
22-OCT-2021

WORLD BANK GROUP
THE WORLD BANK IFC International Finance Corporation

ENERGY MEASURES
Reduced Window to Wall Ratio
Insulation of Roof
Low-E Coated Glass
Variable Refrigerant Volume (VRV) Cooling System
Variable Speed Drives in AHUs
Energy Saving Light Bulbs for Internal Spaces
Energy Saving Light Bulbs for External Areas
Occupancy Sensors in Bathrooms
Occupancy Sensors in Corridors

WATER MEASURES
Low-Flow Showerheads
Low-Flow Faucets
Efficient Flush for Water Closets in All Bathrooms
Water-Efficient Urinals

MATERIALS
Floor Slabs - In-Situ Reinforced Concrete Slab
Roof Construction - In-Situ Reinforced Concrete Slab
External Walls - In-Situ Reinforced Wall
Internal Walls - Plasterboards on Metal Studs with Insulation

www.edgebuildings.com
EDGE is a registered trademark of IFC. ©IFC 2021

The EDGE standard requires 20% efficiencies in energy, water and materials compared to a local benchmark. Predicted efficiencies are not a guarantee of future operational performance. Energy savings may be associated with virtual energy for comfort depending on the presence of heating and cooling systems. Virtual energy does not contribute savings to utility bills.

This certificate is issued by the Certifier based on information provided by the client and the audit by the Auditor, and is subject to the terms and conditions of the Certifier. Contact edge@ifc.org if the above measures are not consistent with your observation on the project.





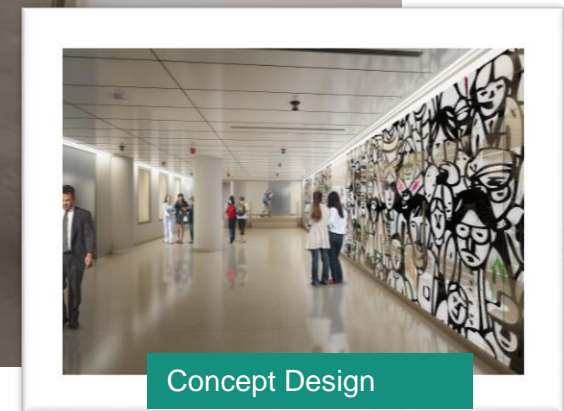
Space Inventory

Main Functions

Main Functions	Count of AREA (m2)
Academic Labs	8
Smart Classrooms	12
Computer Labs	5
Lecture Halls	2
Studios	27
Conference Rooms	2
Multipurpose Rooms	2
Faculty & Staff Offices	60
Cafeteria	1
Courtyard	1
Parking Spaces	94 Vehicles



Lobby area
in front of the
Lecture Halls



Concept Design

Common Facilities – School of Architecture & Design

NUMBERING FUNCTION

Level 6 – Ground Floor

GB 603 Fabrication Lab/Metal

GB 604 Fabrication Lab/Wood



Foundation Program – Academic Spaces

Foundation Program

NUMBERING	FUNCTION
Level 8	
GB 804	Studio/Foundation
GB 805	Studio/Foundation
Level 9	
GB 909	Studio/Foundation



Art & Design Department – Academic Spaces

Common Facilities

NUMBERING	FUNCTION
Level 5	
GB 505	Computer Lab/MAC
GB 505B	Computer Classroom/MAC
GB 506A	Photography/Studio
GB 508	Computer Lab/MAC



Graphic Design

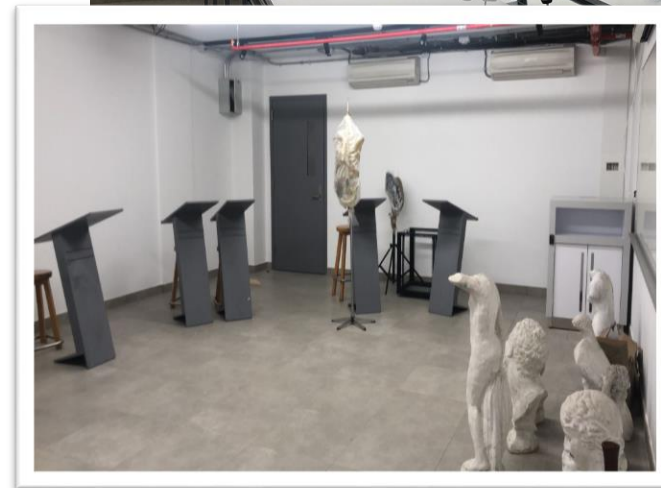
NUMBERING	FUNCTION
Level 8	
GB 803	Studio/Graphic Design
GB 808	Studio/Graphic Design
Level 9	
GB 906	Studio/Graphic Design Senior



Art & Design Department – Academic Spaces

Fine Arts

NUMBERING	FUNCTION
Level 4	
GB 401	Studio/Print Making
GB 402	Sculpture Room
GB 405	Drawing Room
GB 406	Drawing Room
GB 407	Lab/Silk Printing
Level 5	
GB 501	Ceramics Lab
Level 6	
GB 605A	Painting Room



Art & Design Department – Academic Spaces

Fashion Design

NUMBERING	FUNCTION
Level 6	
GB 605B	Cutting Studio
Level 8	
GB 806A	Fashion Printing Lab
GB 806	Sewing Lab
GB 807	Design Studio



Architecture & Interior Design Department – Academic Spaces

Common Facilities

Numbering	FUNCTION
Level 5	
GB 502	Digital Fabrication Lab
GB 504	Computer Lab/PC
GB 507	Computer Lab/PC



Architecture

Numbering	FUNCTION
Level 10	
GB 1004	Studio/Architecture
GB 1005	Studio/Architecture
GB 1006	Studio/Architecture
GB 1007	Studio/Architecture
Level 12	
GB 1204	Studio/Architecture
GB 1205	Studio/Architecture
GB 1206	Studio/Architecture
GB 1207	Studio/Architecture
GB 1208	Studio/Architecture Graduate



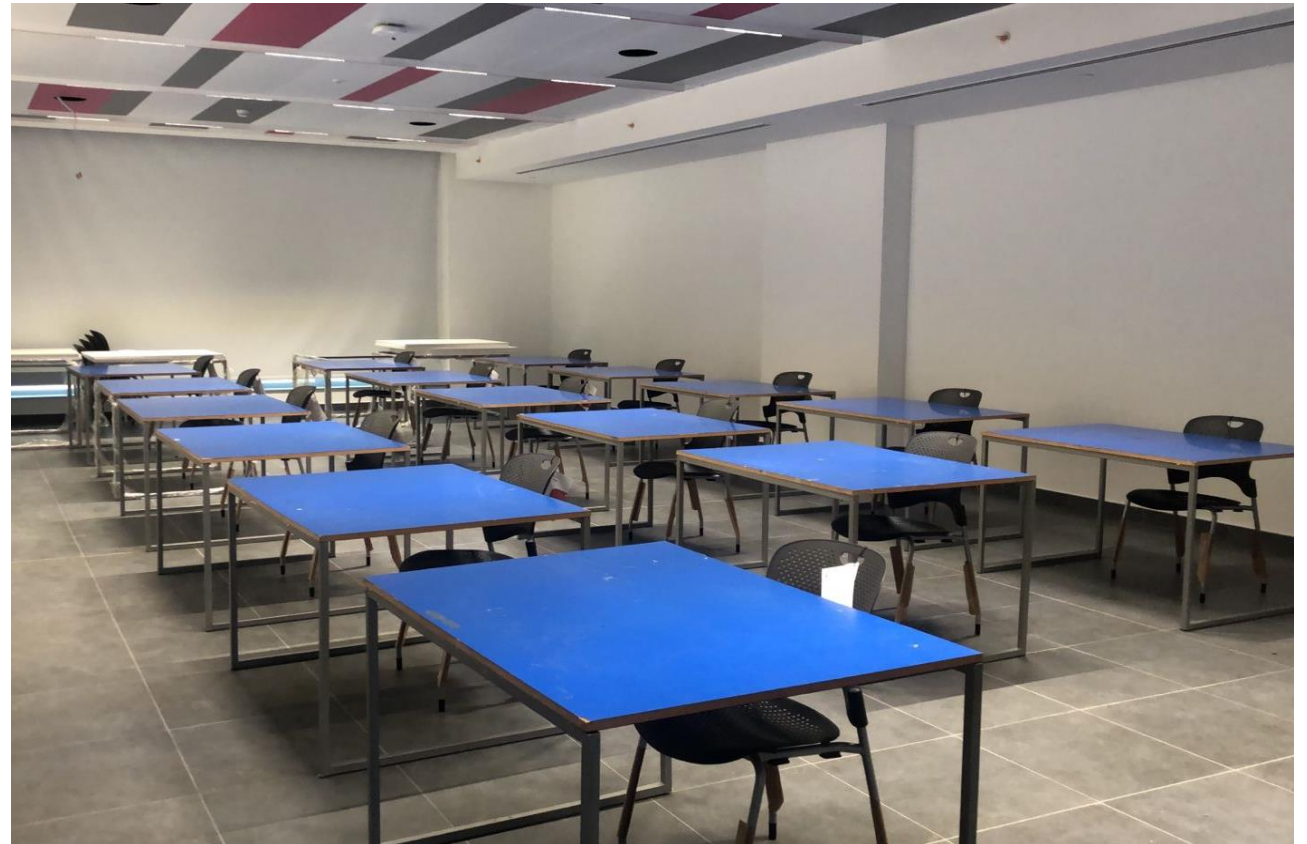
Architecture & Interior Design Department – Academic Spaces

Interior Design

Numbering	FUNCTION
Level 9	
GB 903	Studio/Interior Design
GB 910	Studio/Interior Design
GB 912	Studio/Interior Design
Level 12	
GB 1203	Studio/Interior Design Graduate

Institutes

Numbering	FUNCTION
Level 12	
GB 1201	Institute for Environmental Studies & Research
GB 1202	Institute of Islamic Art & Architecture



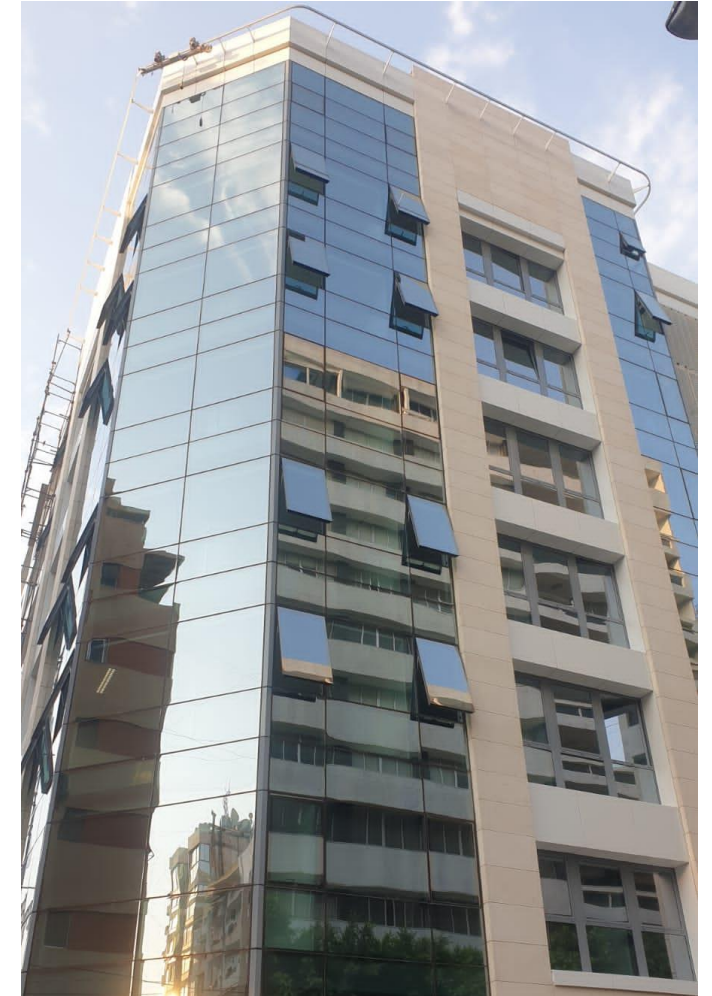
Common Academic Spaces

Level	Numbering
Lecture Halls	
4	GB 403
4	GB 404
Classrooms	
8	GB 801
8	GB 802
9	GB 901
9	GB 902
10	GB 1001
10	GB 1002
11	GB 1101
11	GB 1102
11	GB 1106
11	GB 1107
Conference Rooms	
9	GB 904
9	GB 905
Multi-purpose Rooms	
1	GB 600
10	GB 1003



List of SArD Departments – Offices' Building

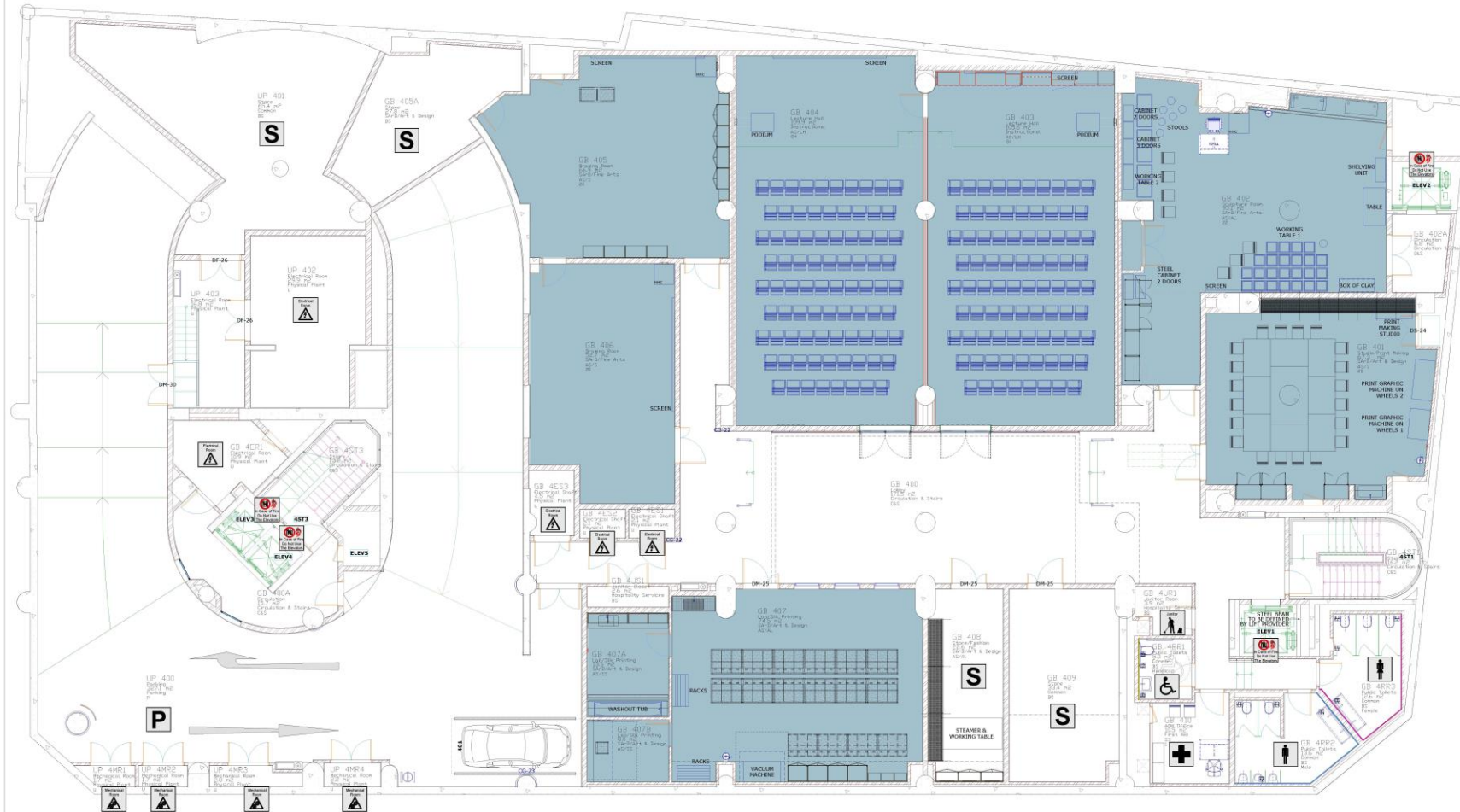
Level	Program	Administrative Support	Office Number	Ext.
Level 7	Fashion Design			
Level 8	Foundation Program Fine Arts	Ms. Ramona Khalifeh	GB 823	Ext. 1392
Level 9	Graphic Design	Ms. Mary Kassab	GB 923	Ext. 1748
Level 10	Architecture Interior Design			
Level 12	Office of the Dean of the School of Architecture & Design	Ms. Mayssam Ezzedine	GB 1023	Ext. 1372





GB Zoning Maps

GEZAIRI BUILDING - LEVEL 4



Instructional Resources:

Numbering	Function	Department
GB 401	Studio/Print Making	SArD/Fine Arts
GB 402	Sculpture Room	SArD/Art & Design
GB 403	Lecture Hall	Instructional
GB 404	Lecture Hall	Instructional
GB 405	Drawing Room	SArD/Fine Arts
GB 406	Drawing Room	SArD/Fine Arts
GB 407	Lab/Silk Printing	SArD/Art & Design
GB 407A	Lab/Silk Printing	SArD/Art & Design
GB 407B	Lab/Silk Printing	SArD/Art & Design

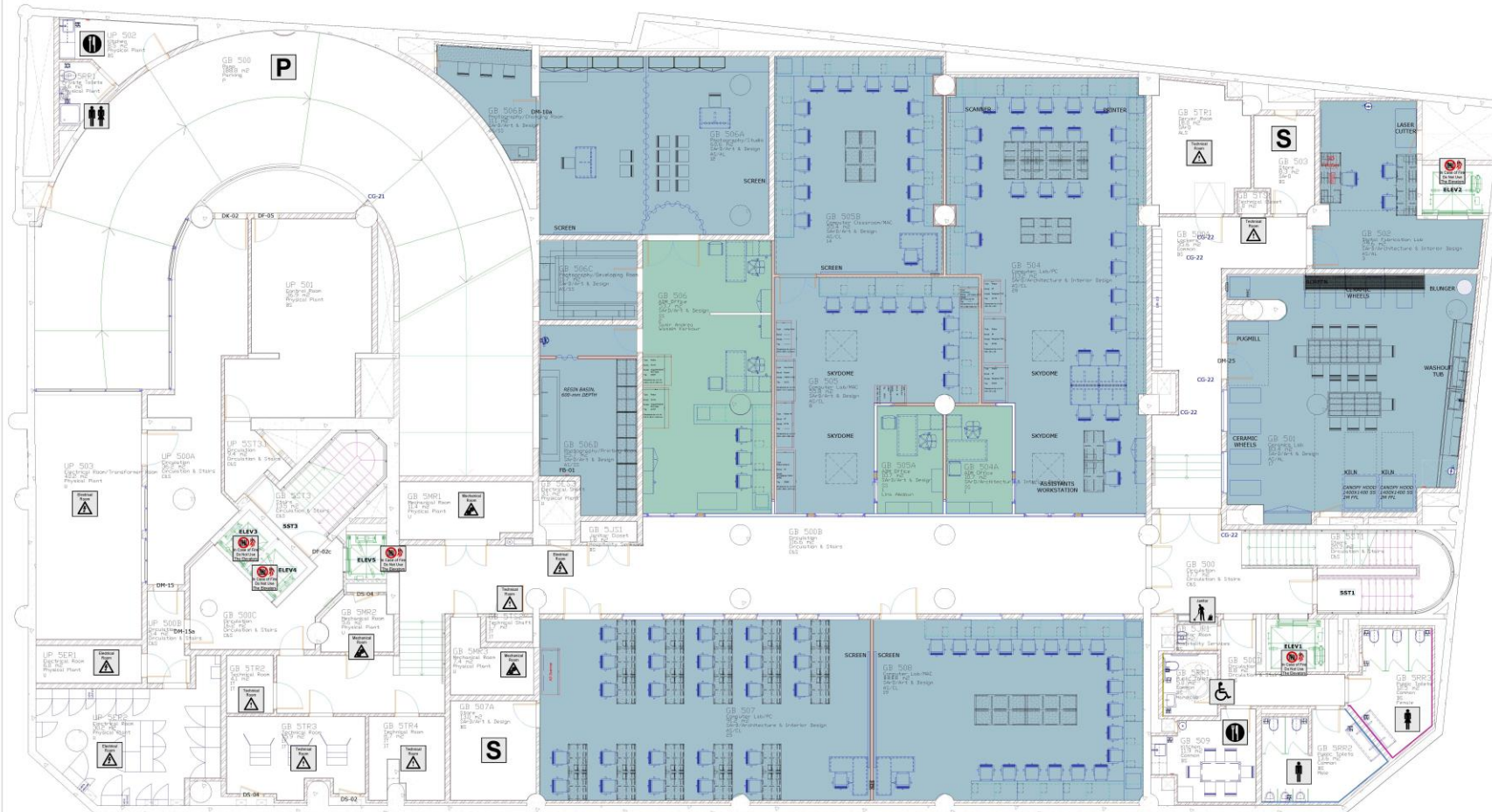
Building Services:

	Electrical Room/Shaft
	Mechanical Room
	Parking
	Store



Gezairi Building

GEZAIRI BUILDING - LEVEL 5



Instructional Resources:

Numbering	Function	Department
GB 501	Ceramics Lab	SArD/Art & Design
GB 502	Digital Fabrication Lab	SArD/Architecture & Interior Design
GB 504	Computer Lab/PC	SArD/Architecture & Interior Design
GB 505	Computer Lab/MAC	SArD/Art & Design
GB 505B	Computer Classroom/MAC	SArD/Art & Design
GB 506A	Photography/Studio	SArD/Art & Design
GB 506B	Photography/Changing Room	SArD/Art & Design
GB 506C	Photography/Developing Room	SArD/Art & Design
GB 506D	Photography/Printing Room	SArD/Art & Design
GB 507	Computer Lab/PC	SArD/Architecture & Interior Design
GB 508	Computer Lab/MAC	SArD/Art & Design

Offices:

Numbering	Function	Department
GB 504A	ADM Office	SArD/Architecture & Interior Design
GB 505A	ADM Office	SArD/Art & Design
GB 506	ADM Office	SArD/Art & Design

Building Services:

	Electrical Room/Shaft
	Mechanical Room
	Technical Room
	Parking
	Store



Gezairi Building

GEZAIRI BUILDING - LEVEL 6



Instructional Resources:

Numbering	Function	Department
GB 603	3D Fabrication Lab/ Metal	SArD/Architecture & Interior Design
GB 604	3D Fabrication Lab/ Wood	SArD/Architecture & Interior Design
GB 605A	Painting Room	SArD/Art & Design

Offices:

Numbering	Function	Department
GB 604A	ADM Office	SArD/Art & Design

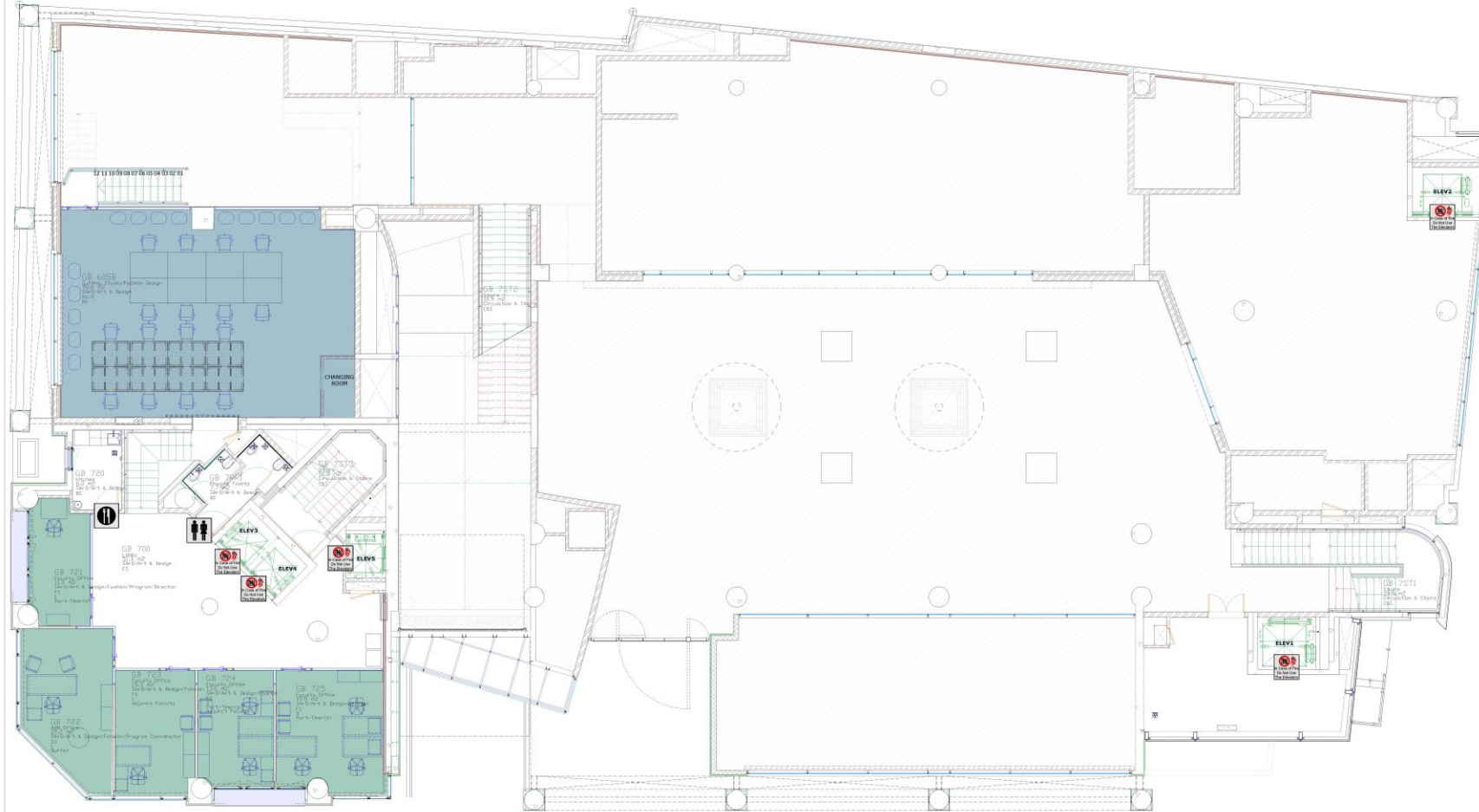
Building Services:

	Technical Room
	Parking



Gezairi Building

GEZAIRI BUILDING - LEVEL 7



Instructional Resources:

Numbering	Function	Department
GB 605B	Cutting Studio/ Fashion Design	SArD/Art & Design

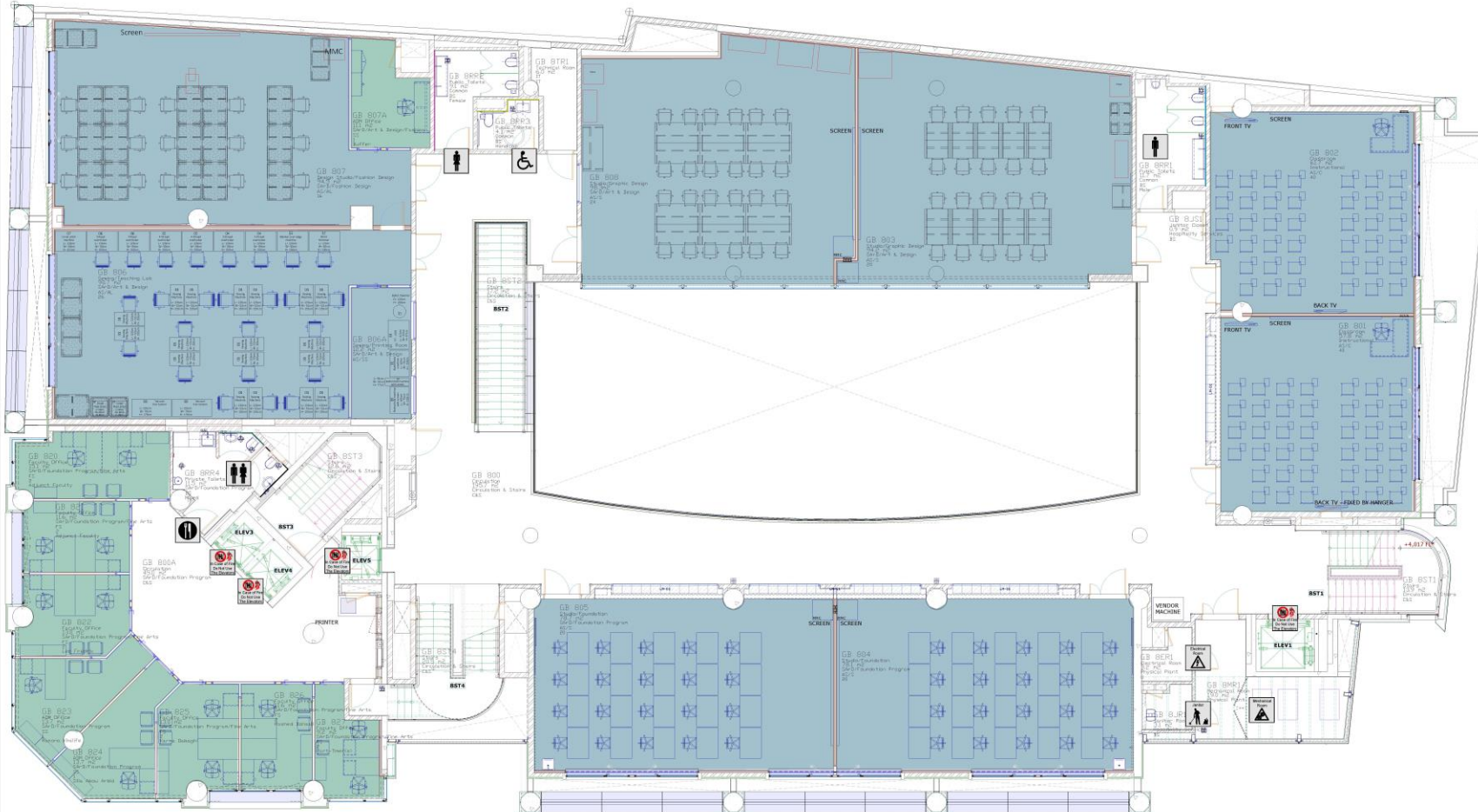
Offices:

Numbering	Function	Department
GB 721	Faculty Office	SArD/Art & Design/ Fashion/Program Director
GB 722	ADM Office	SArD/Art & Design/ Fashion/Program Director
GB 723	Faculty Office	SArD/Art & Design/ Fashion
GB 724	Faculty Office	SArD/Art & Design/ Fashion
GB 725	Faculty Office	SArD/Art & Design/ Fashion



Gezairi Building

GEZAIRI BUILDING - LEVEL 8



Instructional Resources:

Numbering	Function	Department
GB 801	Classroom	Instructional
GB 802	Classroom	Instructional
GB 803	Studio/Graphic Design	SArD/Art & Design
GB 804	Studio/Foundation	SArD/Foundation Program
GB 805	Studio/Foundation	SArD/Foundation Program
GB 806	Sewing/Teaching Lab	SArD/Art & Design
GB 806A	Sewing/Printing Room	SArD/Art & Design
GB 807	Design Studio/ Fashion Design	SArD/Art & Design/ Fashion
GB 808	Studio/Graphic Design	SArD/Art & Design

Offices:

Numbering	Function	Department
GB 807A	ADM Office	SArD/Art & Design/ Fashion
GB 820	Faculty Office	SArD/Foundation Program /Fine Arts
GB 821	Faculty Office	SArD/Foundation Program /Fine Arts
GB 822	Faculty Office	SArD/Foundation Program /Fine Arts
GB 823	ADM Office	SArD/Foundation Program
GB 824	ADM Office	SArD/Foundation Program
GB 825	Faculty Office	SArD/Foundation Program /Fine Arts
GB 826	Faculty Office	SArD/Foundation Program /Fine Arts
GB 827	Faculty Office	SArD/Foundation Program /Fine Arts

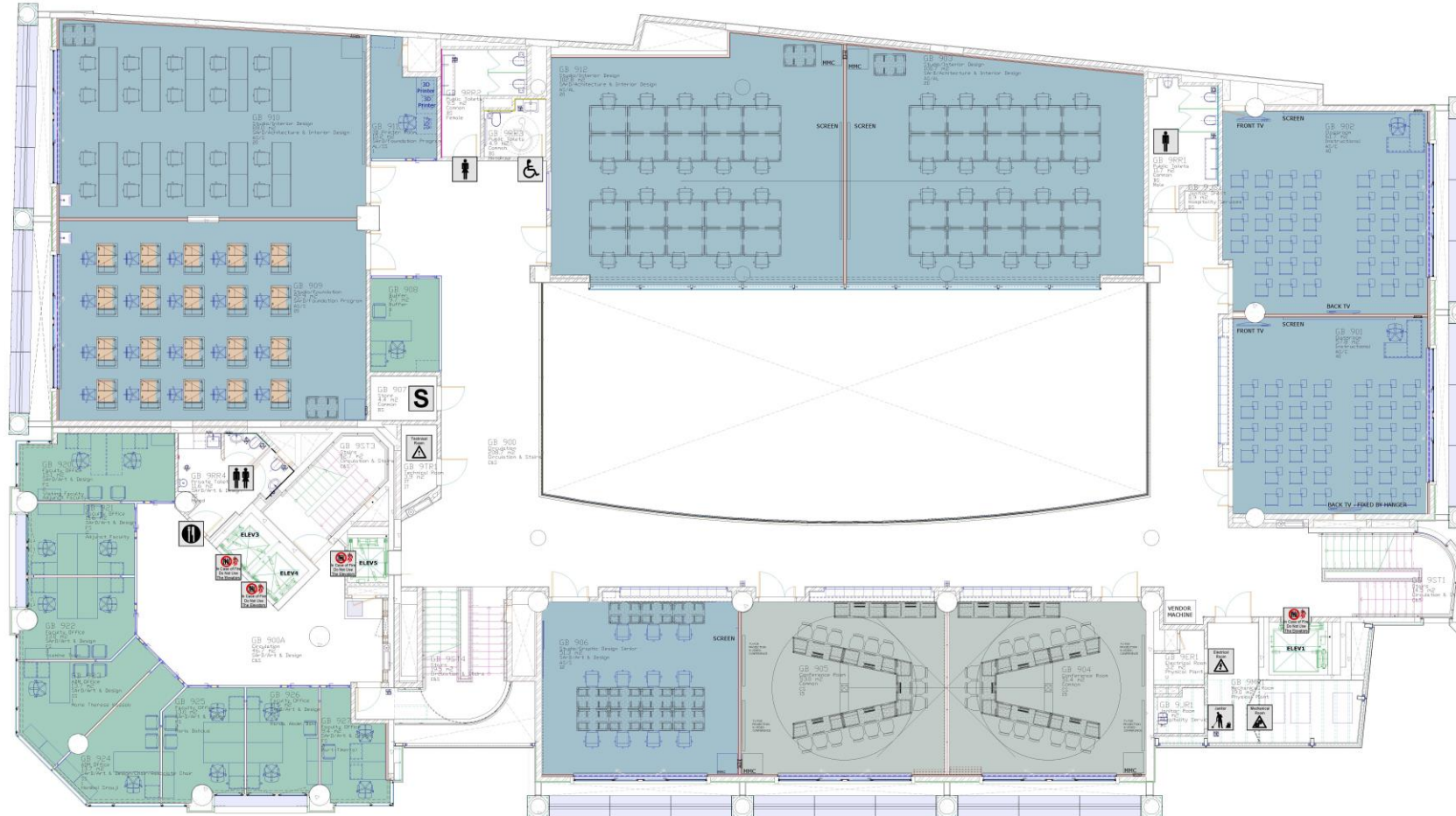
Building Services:

	Electrical Room/Shaft
	Mechanical Room



Gezairi Building

GEZAIRI BUILDING - LEVEL 9



Instructional Resources:

Numbering	Function	Department
GB 901	Classroom	Instructional
GB 902	Classroom	Instructional
GB 903	Studio/Interior Design	SArD/Architecture & Interior Design
GB 904	Conference Room	Common
GB 905	Conference Room	Common
GB 906	Studio/Graphic Design Senior	SArD/Art & Design
GB 909	Studio/Foundation Room	SArD/Foundation Program
GB 910	Studio/Interior Design	SArD/Architecture & Interior Design
GB 911	3D Printer Room	SArD/Foundation Program
GB 912	Studio/Interior Design	SArD/Architecture & Interior Design

Multipurpose:

Numbering	Function	Department
GB 904	Conference Room	Common
GB 905	Conference Room	Common

Offices:

Numbering	Function	Department
GB 908	Buffer	Buffer
GB 920	Faculty Office	SArD/Art & Design
GB 921	Faculty Office	SArD/Art & Design
GB 922	Faculty Office	SArD/Art & Design
GB 923	ADM Office	SArD/Art & Design
GB 924	ADM Office	SArD/Art & Design/Chair/Associate Chair
GB 925	Faculty Office	SArD/Art & Design
GB 926	Faculty Office	SArD/Art & Design
GB 927	Faculty Office	SArD/Art & Design

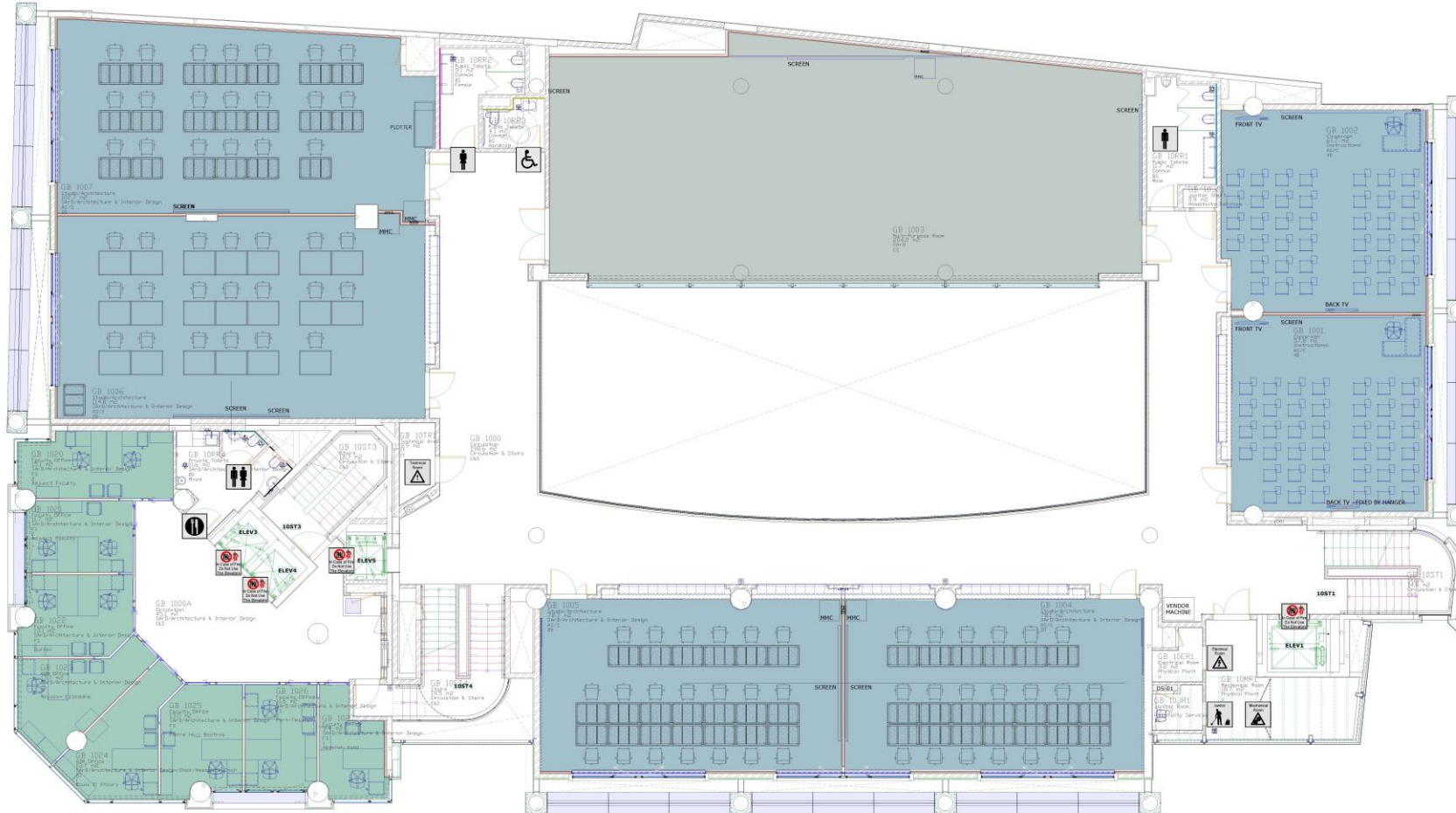
Building Services:

	Electrical Room/Shaft
	Mechanical Room
	Technical Room
	Store



Gezairi Building

GEZAIRI BUILDING - LEVEL 10



Instructional Resources:

Numbering	Function	Department
GB 1001	Classroom	Instructional
GB 1002	Classroom	Instructional
GB 1004	Studio/Architecture	SARD/Architecture & Interior Design
GB 1005	Studio/Architecture	SARD/Architecture & Interior Design
GB 1006	Studio/Architecture	SARD/Architecture & Interior Design
GB 1007	Studio/Architecture	SARD/Architecture & Interior Design

Multipurpose:

Numbering	Function	Department
GB 1003	Multipurpose Room	SARD

Offices:

Numbering	Function	Department
GB 1020	Faculty Office	SARD/Architecture & Interior Design
GB 1021	Faculty Office	SARD/Architecture & Interior Design
GB 1022	Faculty Office	SARD/Architecture & Interior Design
GB 1023	ADM Office	SARD/Architecture & Interior Design
GB 1024	ADM Office	SARD/Architecture & Interior Design/Chair/Associate Chair
GB 1025	Faculty Office	SARD/Architecture & Interior Design
GB 1026	Faculty Office	SARD/Architecture & Interior Design
GB 1027	Faculty Office	SARD/Architecture & Interior Design

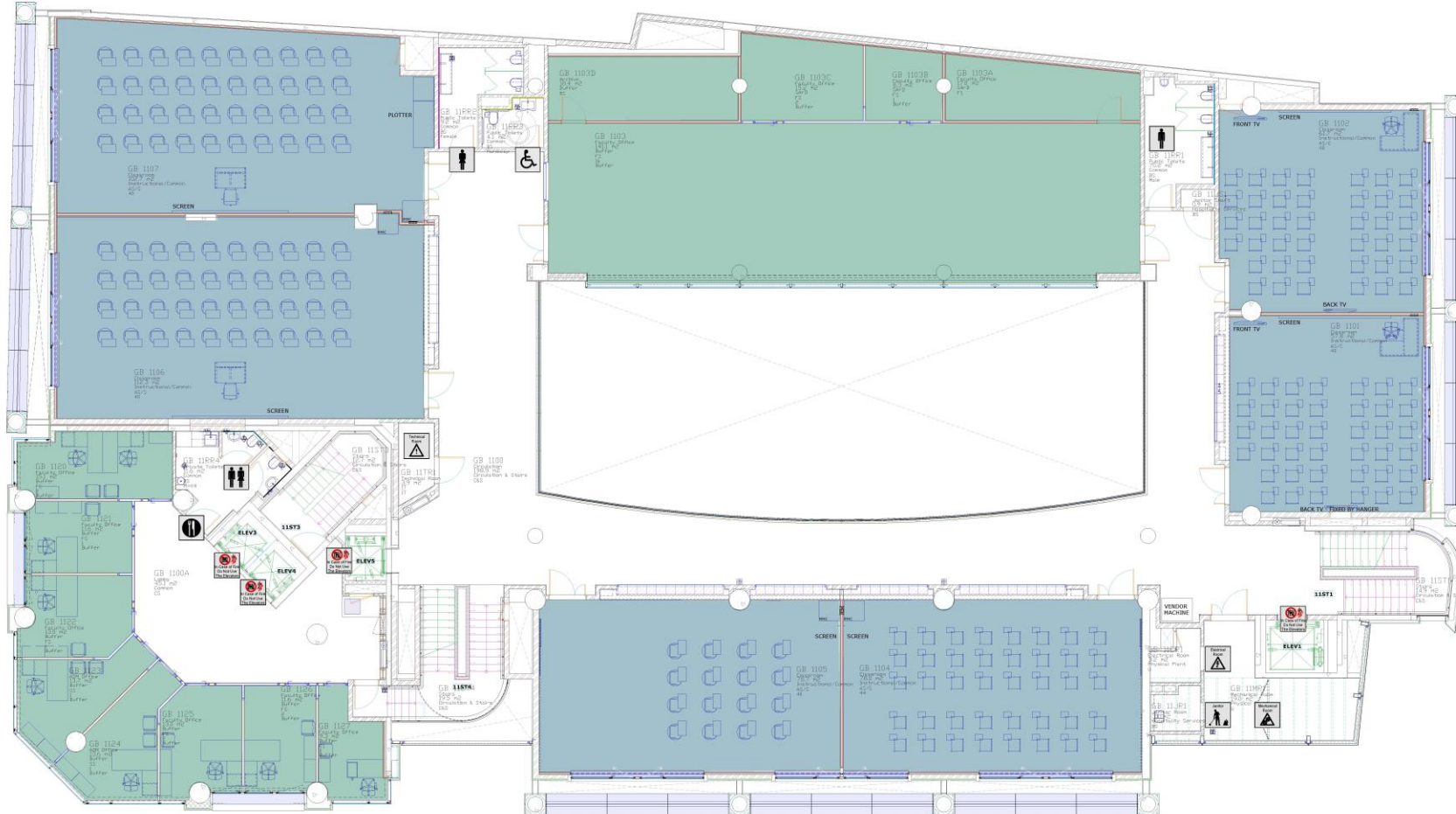
Building Services:

	Electrical Room/Shaft
	Mechanical Room
	Technical Room



Gezairi Building

GEZAIRI BUILDING - LEVEL 11



Instructional Resources:

Numbering	Function	Department
GB 1101	Classroom	Instructional
GB 1102	Classroom	Instructional
GB 1104	Classroom	Instructional
GB 1105	Classroom	Instructional
GB 1106	Classroom	Instructional
GB 1107	Classroom	Instructional

Offices:

Numbering	Function	Department
GB 1103	Faculty Office	Buffer
GB 1103A	Faculty Office	Buffer
GB 1103B	Faculty Office	Buffer
GB 1103C	Faculty Office	Buffer
GB 1120	Faculty Office	Buffer
GB 1121	Faculty Office	Buffer
GB 1122	Faculty Office	Buffer
GB 1123	ADM Office	Buffer
GB 1124	ADM Office	Buffer
GB 1125	Faculty Office	Buffer
GB 1126	Faculty Office	Buffer
GB 1127	Faculty Office	Buffer

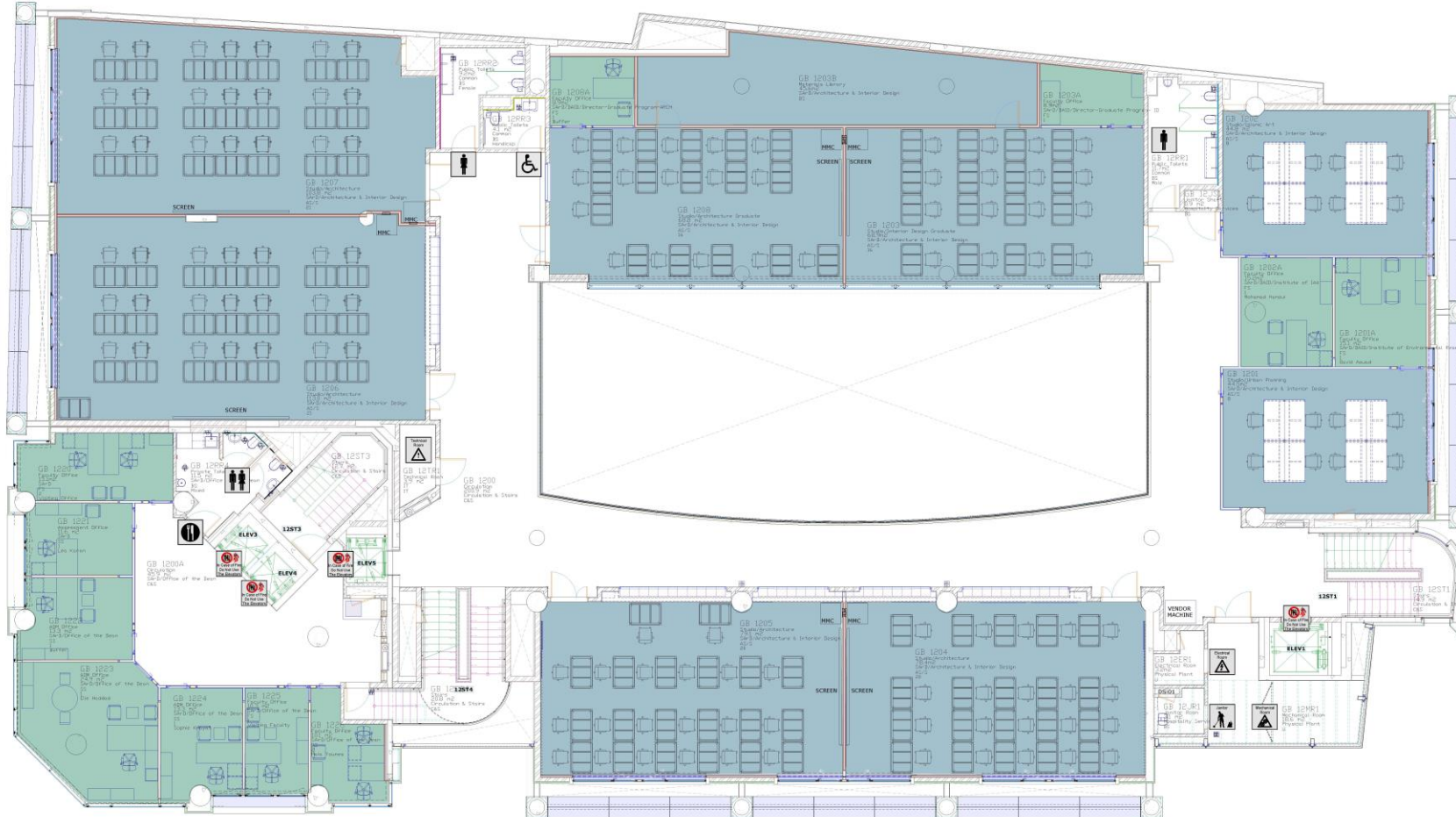
Building Services:

	Electrical Room/Shaft
	Mechanical Room
	Technical Room



Gezairi Building

GEZAIRI BUILDING - LEVEL 12



Instructional Resources:

Numbering	Function	Department
GB 1201	Studio/Urban Planning	SArD/Architecture & Interior Design
GB 1202	Studio/Islamic Art	SArD/Architecture & Interior Design
GB 1203	Studio/Interior Design Graduate	SArD/Architecture & Interior Design
GB 1203B	Materials Library	SArD/Architecture & Interior Design
GB 1204	Studio/Architecture	SArD/Architecture & Interior Design
GB 1205	Studio/Architecture	SArD/Architecture & Interior Design
GB 1206	Studio/Architecture	SArD/Architecture & Interior Design
GB 1207	Studio/Architecture	SArD/Architecture & Interior Design
GB 1208	Studio/Architecture Graduate	SArD/Architecture & Interior Design

Offices:

Numbering	Function	Department
GB 1201A	Faculty Office	SArD/DAID/Institute of Environmental Reseach
GB 1202A	Faculty Office	SArD/DAID/Institute of IA
GB 1203A	Faculty Office	SArD/DAID/Director Graduate Program-ID
GB 1208A	Faculty Office	SArD/DAID/Director Graduate Program-ARCH
GB 1220	Faculty Office	SArD
GB 1221	Assessment Office	SArD
GB 1222	ADM Office	SArD/Office of the Dean
GB 1223	ADM Office	SArD/Office of the Dean
GB 1224	ADM Office	SArD/Office of the Dean
GB 1225	Faculty Office	SArD/Office of the Dean
GB 1226	Faculty Office	SArD/Office of the Dean

Building Services:

	Electrical Room/Shaft
	Mechanical Room
	Technical Room



Gezairi Building

Furniture Care Tips

It's Your Home

- We rely on you to help us protect and sustain the building facilities and furniture.
- “Treat the place as your home” This is a legacy for all architecture and design students, and should be passed on to future generations in the same condition”, Dr. Elie Haddad, Dean of the School of Architecture & Design.

Quick Guide to Classroom Functions

Smart Classroom – Control Panel

Control System



Smart Classroom – Laptop Connection



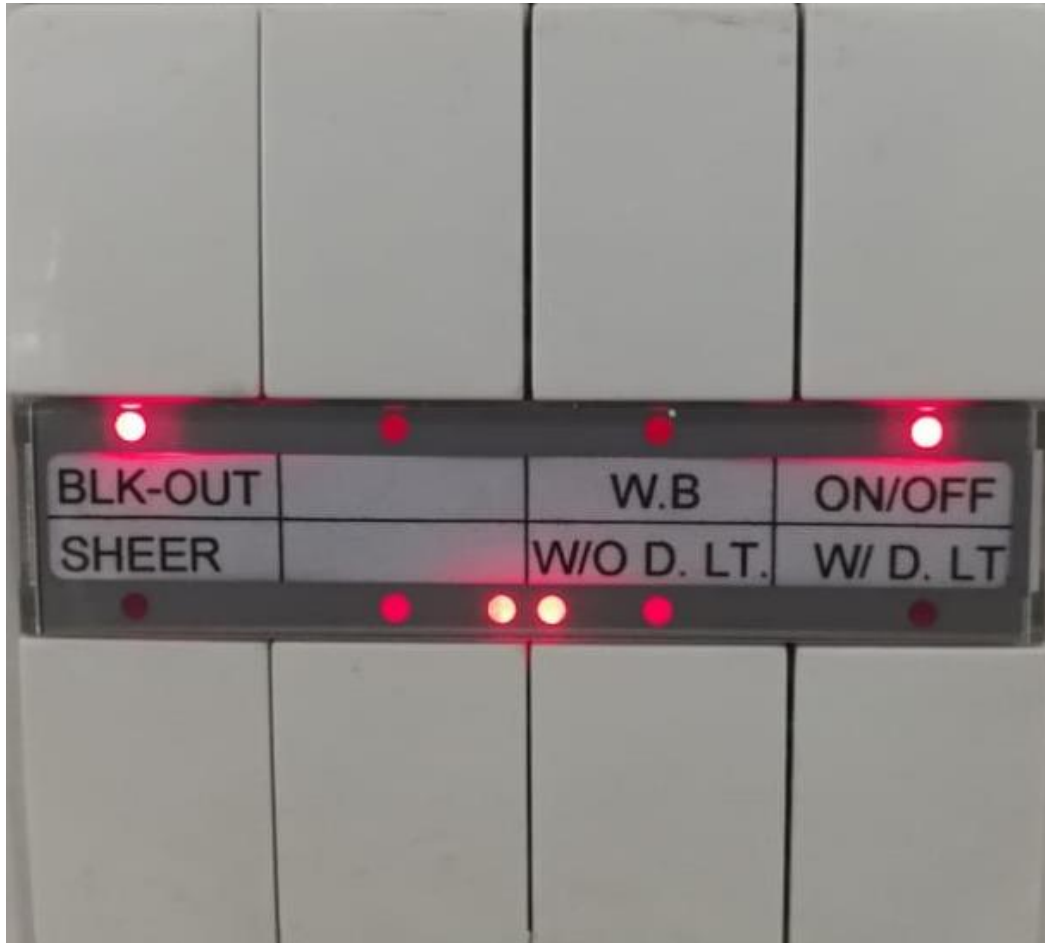
HDMI Cable to Connect
Laptop

EIB System Keypad For Lighting Control

Important Features to Know:

- All lighting fixtures are dimmable to make use of daylight and reduce energy consumption.
- Motion Sensor in classrooms will turn off the lights in case of non-occupancy
- Blank Labels are spare and have no function

Lighting Control in Academic Spaces

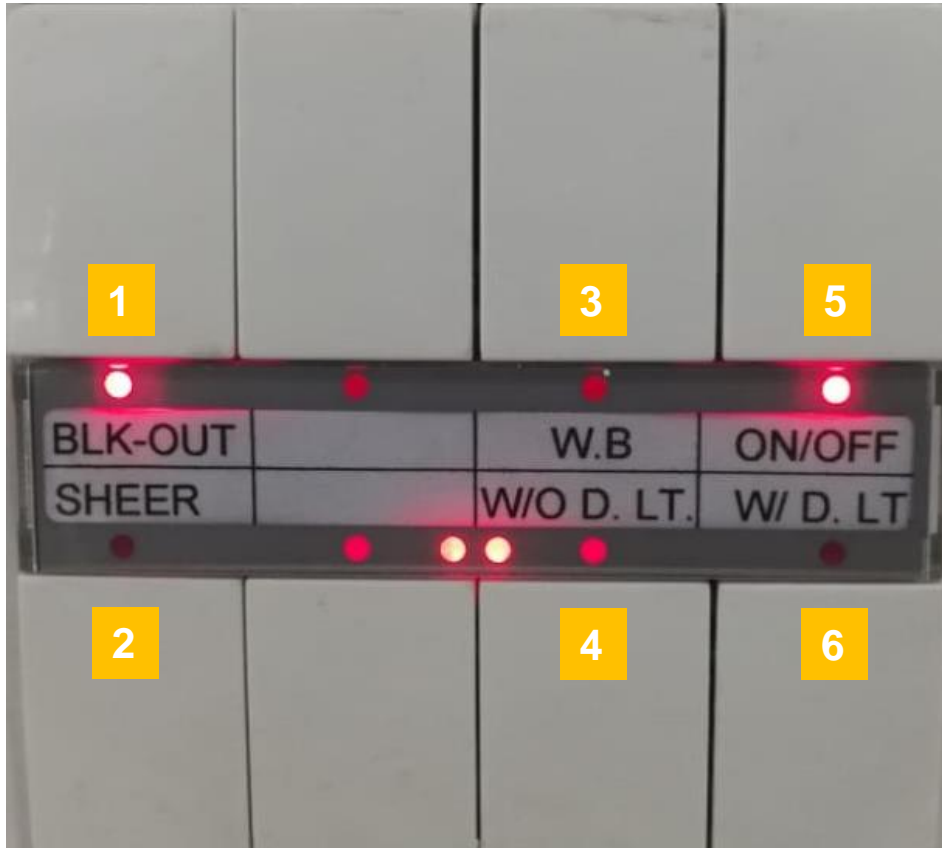


Type 1



Type 2

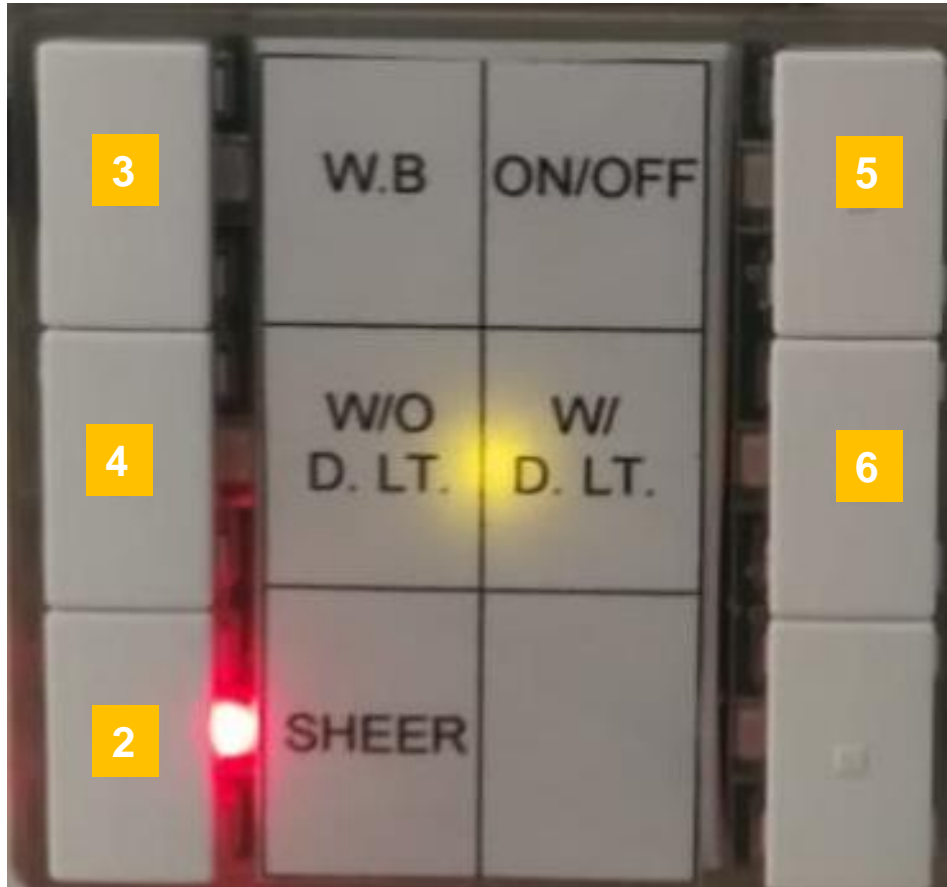
Lighting Control in Academic Spaces – Type 1



Type 1

<p>1 (Blackout)</p>	<p>2 (Sunscreens)</p>	<p>3</p>
<p><u>Simple Press:</u></p> <ul style="list-style-type: none"> Stops Blackout curtain <p><u>Press & Hold more than 2 seconds:</u></p> <ul style="list-style-type: none"> Move Blackout Up and Down 	<p><u>Simple Press:</u></p> <ul style="list-style-type: none"> Stops Sunscreen curtain <p><u>Press & Hold more than 2 seconds:</u></p> <ul style="list-style-type: none"> Move Sunscreen Up and Down 	<ul style="list-style-type: none"> Closes blackout curtain nearest to the whiteboard Turns On wall washers and first row to 100% Dims remaining lights to 70%
<p>4 (Sunscreens)</p>	<p>5</p>	<p>6</p>
<ul style="list-style-type: none"> Fully Opens the Curtains Dims wall washers to 50% Dims Remaining Lights to 70% 	<p>Turns Lights ON or OFF</p>	<ul style="list-style-type: none"> Partially Closes curtains Dims wall washers to 50% Dims near windows light to 40% Dims remaining lights to 80%

Lighting Control in Academic Spaces – Type 2



Type 2

2 (Sunscreens)

Simple Press:

- Stops Sunscreen curtain

Press & Hold more than 2 seconds:

- Moves Sunscreen Up and Down

3

- Closes blackout curtain nearest to the whiteboard
- Turns On wall washers and first row to 100%
- Dims remaining lights to 70%

4 (Sunscreens)

- Fully Opens the Curtains
- Dims wall washers to 50%
- Dims Remaining Lights to 70%

5

Turns Lights ON or OFF

6

- Partially Closes curtains
- Dims wall washers to 50%
- Dims near windows light to 40%
- Dims remaining lights to 80%



Quick Guide to Parking Entrance/Exit



Parking Entrance/Exit:

ATTENTION

- Parking Access for faculty and staff members is available upon subscription. For more information, please contact Ext. 1113.
- The passage area to parking levels 1, 2 & 3 is designed to be one way.
- Control is ensured through two stops:
 - 1- One at Level 6 (GF) Entrance
 - 2- Another one at L4 for Exit

Parking ENTRANCE

1. Stop your car at the yellow line **before the entrance barrier at L6.**
2. Check the status of Stop/Go Sign facing you on the wall. **Do not approach the reader until the sign lights GO.**
3. When sign gives GO, approach the reader; the **RED** traffic light goes ON.
4. Pass your card against the reader within 15 seconds.
5. If you are **Granted Access**, The RED traffic light will go OFF and **YELLOW** traffic light will go ON.
6. **Wait till the barrier fully opens.** The Yellow traffic light will go OFF, and **GREEN** traffic light will go ON. You can pass now.
7. Pass the Barrier within 60 seconds.
8. Check the multiscreen facing you to head to the parking level that has available spaces.

GO Sign



Multiscreen



Parking EXIT

1. Stop your car at the yellow line **before the entrance barrier at L4.**
2. Check the status of Stop/Go Sign facing you on the wall. **Do not approach the reader until the sign lights GO.**
3. When sign gives GO, approach the reader; the **RED** traffic light goes ON.
4. Pass your card against the reader within 15 seconds.
5. If you are **Granted Access**, The RED traffic light will go OFF and **YELLOW** traffic light will go ON.
6. **Wait till the barrier fully opens.** The Yellow traffic light will go OFF, and **GREEN** traffic light will go ON. You can pass now.
7. Pass the Barrier within 60 seconds.

Helpful Phone Extensions

Service Units	Ext.
Facilities Services	1010
IT Support	1000
Security	1500
Health Services	1040

Thank You
