



الجامعة اللبنانية الأمريكية
Lebanese American University

ADMISSIONS VIEWBOOK



VIEWBOOK

WELCOME TO LAU

/OUR MISSION

*The Lebanese American University
is committed to:*

- Academic excellence
- Student centeredness
- Civic engagement
- The advancement of scholarship
- The education of the whole person
- The formation of leaders
in a diverse and changing world

/UNIVERSITY-WIDE ACCREDITATION

LAU's academic quality has been
recognized and is accredited
by the **New England Commission
of Higher Education (NECHE)**.

That means students have:

- Better access to scholarship
opportunities
- Improved employability
- Greater ease in transferring credits
to and from institutions around
the world

View the institutional and program
accreditations on [lau.edu/about/
accreditation.php](http://lau.edu/about/accreditation.php)



STUDENTS FROM
**77 DIFFERENT
NATIONALITIES**

**2 CAMPUSES
7 SCHOOLS**
IN BEIRUT AND BYBLOS



2 UNIVERSITY
**MEDICAL
CENTERS**
with state-of-the-art technology

**AN ACADEMIC
CENTER**
IN NEW YORK



**CLUBS/SPORTS
ACTIVITIES**
*All found within LAU's vibrant
student-centered environment*

PERSONAL & PROFESSIONAL
GROWTH
*through year-round
leadership, study abroad and
civic engagement opportunities*



A LARGE RANGE OF
SERVICES
*to support students'
academic success*

*Financial aid, scholarship
and university employment
packages that cover up to*

100%
OF TUITION EXPENSES



**CAREER
COUNSELING & SERVICES**
*to help students secure
their dream jobs*

A WORLDWIDE
NETWORK OF
ALUMNI
who share the LAU pride



BEYOND ACADEMIC SUCCESS

We focus on students' academic, social and emotional growth. Our services and programs cover their journey from settling into university life and choosing a major to finding employment.

/STUDENT ORIENTATION

Help new students:

- Transition smoothly and successfully into university life.
- Get acquainted with university rules and procedures.
- Get to know deans, advisors, professors and fellow students.

/STUDENT ADVISING

- Empower students to plan for their own academic journey, along with their advisors.
- Provide them with support in overcoming any academic challenges.

/STUDENT COUNSELING

- Short-term, confidential, one-on-one counseling and psychotherapy.
- Crisis and emergency interventions.
- Referrals to off-campus professionals.
- Academic tutoring.
- Career counseling.

/HEALTH SERVICES

Together with LAU's medical centers, the LAU Health Clinics promote and protect the health and wellness of the whole university community.

All students at LAU are insured for medical emergencies and hospitalization. Those who already have insurance are exempted from some of these fees.



/CAREER GUIDANCE SERVICES

- Choosing a major.
- Exploring career options that are associated with each major.
- Searching for internships and jobs.
- Developing job-related goals.
- Researching potential employers.
- Drafting CVs and cover letters.
- Preparing for job interviews.



/OUTREACH PROGRAMS

Through our outreach programs, students are matched with 60 partner NGOs year-round to serve the community and grow their leadership skills, depending on causes they feel strongly about. In turn, many of these organizations offer workshops and internship opportunities to LAU students.

At LAU, students take on pressing global issues through six simulation programs that have become LAU staples:

- Global Classrooms International Model UN (GCI MUN)
- LAU Model United Nations (LAU MUN)
- LAU Model Arab League (LAU MAL)
- LAU Model European Union (LAU MEU)
- LAU Model African Union (LAU MAU)
- LAU Model Good Governance (LAU MGG)



/INTERNATIONAL STUDENT PROGRAM & CULTURAL CLUBS

- Provide support for international students and help them integrate into Lebanese culture, both on and off campus.
- Hold annual events such as Heritage Day, International Education Week and the International Students' Athletics Tournament.



/STUDENT GOVERNANCE

LAU students get to take part in shared governance by selecting their student representatives every year. This democratic process opens the door for leadership and skill-building opportunities, giving them a platform to raise and advance issues that are important to the student body.



/HONORS PROGRAM

Tailored for motivated, academically excelling and inquisitive undergraduate students from a number of disciplines, this highly effective program has been running at LAU since 2015. To be considered for the program, students have to complete at least 15 credits (one semester) with top grades. Those talented students are offered specialized courses in small classes leading to:

- Heightened participation.
- Increased interaction with faculty.
- More personalized attention.
- Lively discussions with like-minded classmates.
- Work on additional projects designed to challenge academically excelling students.



/STUDY ABROAD

Students looking to study abroad have access to programs, scholarships and organizations worldwide. Through LAU's partnership with more than 50 institutions across the globe, students get the chance to spend a semester or more at prestigious universities like Sciences Po in France, the University of California-Berkeley in the US and the University of Ottawa in Canada, during their time at LAU.

LAU IS ALL ABOUT YOU

You will have the chance to take part in a vibrant student community, which includes extracurricular activities, clubs, athletic and sporting events, and academic groups. You will develop leadership skills and community awareness, and achieve academic, intellectual and social growth.

/STUDENT CENTER & GYMS

LAU students have a number of places for sports and recreation, including a swimming pool; a student center and fitness center; tennis, volleyball and basketball courts; as well as spaces for martial arts, games, and exercise and dance classes.

/STAYING ACTIVE

The Office of the Dean of Students coordinates a diverse range of activities and clubs that includes everything from culture and sports to human rights and the arts. These groups provide you with outlets to pursue your interests and interact with the community.





A. Athletic Activities **V.** Varsity Sports

/ATHLETICS & VARSITY SPORTS

The LAU Athletics Offices organize intercollegiate, intramural, high-school, and international tournaments, in addition to arranging student participation in local, regional and international events.

HELPING WITH COSTS

At LAU, we believe that all eligible students deserve an excellent education, regardless of financial limitations. More than **\$100 million** has been allocated for financial aid and scholarships for the upcoming academic year.

LAU is committed to helping students fund their education. Financial aid, grants and scholarships are given based on the financial need and academic standing of applicants, regardless of their nationality, race, gender, religion or ethnicity.

We encourage you to apply for financial aid and scholarships as early as possible. All aid and scholarships are renewable as long as certain grades and credit-load conditions are met. For more information, please visit lau.edu/apply/financial-aid

/SCHOLARSHIPS

National Council for Scientific Research Scholarship

- > Covers **100 percent of tuition**
- > Awarded to the top five Lebanese students **in each section of the official Lebanese Baccalaureate exam**

Merit Scholarship**

- > Covers **100 percent of tuition**
- > Awarded to students with **excellent grades** in school and on their SAT exams

LAU Scholarships*

- > Covers between **10 and 50 percent of tuition**
- > Available to students with **very high scores** on:
 - The official **Baccalaureate exam**
 - The **SAT exam**
 - School **grades**

/COMPETITION-BASED & OTHER SCHOLARSHIPS

Athletic Scholarship**

- > Covers **up to 15 percent of tuition**
- > Awarded to students demonstrating **athletic talent**

LAU Awards**

- > Covers between **10 and 50 percent of tuition**
- > Granted to students who have won any of the **LAU competitions: MUN, MAL, MEU, MAU, MGG, Arts & Sciences, Architecture, Engineering, etc.**

/FINANCIAL AID**

For more information, please visit lau.edu/aid

LAU Grants

- > Funding that students are not required to pay back

Special Donors' Grants

- > Awarded by external donors
- > Available to students who fulfill eligibility criteria

US Federal Loans

- > Available to students who are US citizens or green card holders

Student Employment

- > Students can also **earn extra pocket money** while **gaining work experience** by applying for student employment after their first semester.

* If they qualify, students may be awarded these scholarships automatically. No application required.

** Please check the application deadline on lau.edu/apply/deadlines.php

TUITION, FINANCIAL AID AND SCHOLARSHIPS APPLICATION

/HOW TO APPLY FOR FINANCIAL AID

- 1**
After applying to LAU, you can **apply to financial aid online** through the Portal or at: faonline.lau.edu.lb. For the **financial aid application**, you can use the **same username and password** as on the Portal.
- 2**
Print the application you submitted online, **sign** it and **collect the required documents**.
- 3**
Submit the hard-copy application and required documents to the Financial Aid and Scholarships Office.
- 4**
Attend an interview with the Financial Aid and Scholarships Office.

Financial aid applications are available for fall and spring semesters only.

/HOW TO APPLY FOR AN ATHLETIC SCHOLARSHIP

- 1**
Download the application from the website below:
lau.edu/scholarships
- 2**
Complete the application and sign it.
- 3**
Attach any references and/or any awards from your coaches that you may have won.
- 4**
Submit the application and required documents to the Financial Aid and Scholarships Office by the set deadline.

/HOW TO APPLY FOR A MERIT SCHOLARSHIP

- 1**
After applying to LAU, you can **apply to the Merit Scholarship online** at:
lau.edu/scholarships
- 2**
Upload all your **certificates, awards and supporting documents**.
- 3**
Submit it online*

*Kindly note that only shortlisted applicants will be contacted.

/TUITION

Undergraduate tuition is charged at a fixed rate based on 12 credits. Any credits above 12 are free with a maximum of 18 credits allowed per semester. Students taking fewer than 12 credits, or those enrolled in summer courses, are charged on a per-credit basis.

Additional information on tuition and fees is available at: lau.edu/fees

A PLACE TO LIVE & LEARN

BEIRUT CAMPUS

The **Beirut campus** is located within the Hamra district in the heart of the city. It sits on **27,500 m² of land**, which encompass **13 buildings** and plenty of greenery. Its central location in the country's capital enables students to have easy access to cultural, social, educational and recreational opportunities.

Our other campus is in **Byblos**, a coastal town situated 35 kilometers north of Beirut. Overlooking the old city as well as the Mediterranean Sea, the campus features **19 buildings** and many green spaces across **317,643 m²**. To facilitate students' commute, LAU offers a shuttle bus between Beirut and Byblos, as well as Byblos and Tripoli.

BYBLOS CAMPUS

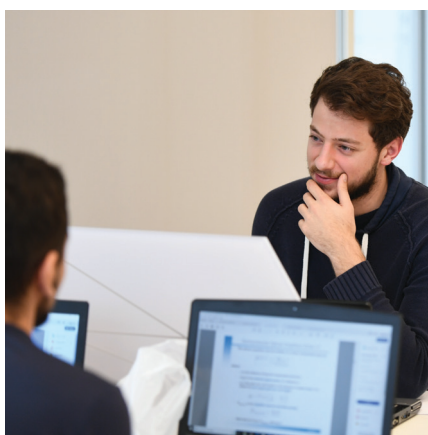
NEW YORK HEADQUARTERS

The **LAU NY Headquarters and Academic Center** is a **high-tech facility** located in the heart of Manhattan. Consisting of classrooms equipped with smart boards, video conferencing technology and HD projectors, the center hosts international conferences, lectures and workshops that feature leading scholars.



/LAU MEDICAL CENTERS

The LAU Medical Center-Rizk Hospital and the LAU Medical Center-Saint John's Hospital serve the community with evidence-based, patient-centered care, while providing excellent education, research and innovation for LAU's medicine, nursing, nutrition and pharmacy programs.



/LAU LIBRARIES

Our three libraries boast spacious and well-stocked facilities that include conference rooms, computer centers, group study areas, and open stacks holding about 392,642 print books. In addition, you'll have access to hundreds of thousands of e-books and e-journals, as well as databases.



/LAU RESIDENCE HALLS

Living in LAU's residence halls brings students together and enhances their university experience. The halls provide well-equipped, secure facilities to live and study comfortably. The team oversees the dormitories and organizes regular social activities.

UNDERGRADUATE PROGRAMS

For students entering as freshmen, LAU offers Freshman Arts & Freshman Science Programs. (30 credits each)
Program information is regularly updated. For the latest list, visit: lau.edu/study

/SCHOOL OF ARCHITECTURE AND DESIGN

Bachelor of Architecture (BArch)
(176 credits)

Bachelor of Arts (BA) in Fine Arts
(92 credits)

Bachelor of Fine Arts (BFA) in:

- Fashion Design (128 credits)
(In collaboration with ELIE SAAB and London College of Fashion)
- Graphic Design (110 credits)
- Interior Design (120 credits)

/SCHOOL OF ENGINEERING

Bachelor of Engineering (BE; 150 credits) in:

- Civil Engineering
- Computer Engineering
- Electrical Engineering
- Industrial Engineering
- Mechanical Engineering
- Mechatronics Engineering
- Petroleum Engineering

/SCHOOL OF ARTS AND SCIENCES

Bachelor of Arts (BA; 92 credits) in:

- Communication
- Education
- English
- Multimedia Journalism
- Performing Arts
- Political Science/International Affairs
- Psychology
- Television and Film
- Translation

Bachelor of Science (BS) in:

- Bioinformatics (100 credits)
- Biology (96 credits)
- Chemistry (94 credits)
- Computer Science (92 credits)
- Mathematics (92 credits)
- Nutrition and Dietetics* (96 credits)
- Nutrition and Dietetics-Coordinated Program* (CP) (123 credits)

**These programs do not lead to New York State certification. Dietitians and nutritionists do not have the authority to independently engage in the ordering of medical nutrition therapy in New York State.*

/ADNAN KASSAR SCHOOL OF BUSINESS

Bachelor of Science (BS; 92 credits) in:

- Business Studies with emphasis in:
 - Accounting
 - Banking and Finance
 - Family & Entrepreneurial Business Management
 - Information Technology Management
 - International Business
 - Management
 - Marketing
- Business Studies with emphasis in Hospitality & Tourism Management
- Economics

/ALICE RAMEZ CHAGOURY SCHOOL OF NURSING

Bachelor of Science (BS) in Nursing
(103 credits)

/SCHOOL OF PHARMACY

Bachelor of Science (BS) in Pharmacy
(174 credits)

Roughly speaking, a credit means an hour of class per week. The usual "speed" for most students is 15 credits (more or less) per semester, adding up to around 30 credits per year — or even more if you choose to take a few courses during the summer. You can estimate the number of years of your major by checking the total number of credits you need to complete for that major. For example, a 92-credit program means you can complete it in 3 years.

/UNDERGRADUATE MINORS

- Actuarial Science
 - Advertising & Public Relations
 - Animation
 - Arabic Language & Literature
 - Art History
 - Audiovisual Production
 - Biology
 - Business
 - Chemical Engineering
 - Chemistry
 - Climate Change & Sustainability Policy (CLIMASP)
 - Computer Science
 - Conflict Analysis & Resolution
 - Construction Management
 - Creative and Journalistic Writing
- Data Analytics
 - Economics
 - English
 - Environmental Science
 - Fine Arts
 - Food Science & Management
 - Gender Studies
 - History
 - Hospitality & Tourism Management
 - Islamic Art & Architecture
 - Legal Studies
 - Mathematics
 - Multimedia Journalism
 - Nutrition
 - Performing Arts
 - Philosophy
- Photography
 - Physics
 - Political Science/International Affairs
 - Psychology
 - Religious Studies
 - Social Work & Community Development
 - Sociology

/DIPLOMAS

- Dietetic Internship (12 credits)
- Diploma in Learning Disability and Giftedness (21 credits)
- ProGreen Diploma (18 credits)
- Teaching Diploma (TD) (21 credits)

LAU ACCREDITATION

LAU is accredited by the **New England Commission of Higher Education (NECHE)**. NECHE is the regional accrediting association in the United States, developing and regularly reviewing standards for educational institutions of all levels. LAU has also sought out additional accreditations for individual programs from leading institutions to ensure:

- Students receive the strongest educational package possible
- Ease in transferring credits to and from other institutions
- Greater chance of acceptance to other graduate schools
- Increased employability

/SCHOOL OF ARCHITECTURE AND DESIGN

The **Bachelor of Architecture (BArch)** is accredited by the **National Architectural Accrediting Board (NAAB)** that accredits architecture programs in the United States. The program is the first in Lebanon and the third outside the United States to receive NAAB accreditation. It is officially recognized by the French government, which allows its graduates to practice in France and the European Union.

The School of Architecture and Design is accredited by the **National Association of Schools of Art and Design (NASAD)** in the United States, covering the **BA in Fine Arts** and the **BFA in Interior Design, Graphic Design, and Fashion Design**.

/ADNAN KASSAR SCHOOL OF BUSINESS

The **Adnan Kassar School of Business'** undergraduate and graduate programs are accredited by the **Association to Advance Collegiate Schools of Business (AACSB)**.

The programs are:

- BS in Business Studies
- BS in Business Studies with emphasis in Hospitality & Tourism Management
- BS in Economics
- Master of Business Administration (MBA)
- Executive Master of Business Administration (EMBA)
- MS in Human Resources Management.

In addition, the **Department of Hospitality and Tourism Management** at the Adnan Kassar School of Business (AKSOB) is accredited by the **Accreditation Commission for Programs in Hospitality Administration (ACPHA)**.

/SCHOOL OF ARTS AND SCIENCES

The **Bachelor of Science (BS) in Computer Science** at LAU is accredited by the **Computing Accreditation Commission of the Accreditation Board for Engineering and Technology (ABET)**.

The **BS in Nutrition and Dietetics Coordinated Program (CP)** has been granted candidacy for accreditation by the accrediting agency for the **Academy of Nutrition and Dietetics** in the United States. The CP in the **Department of Natural Sciences** is the only dietetics education program with a concentration in **Interprofessional Education (IPE)**. It is also the only one in Lebanon to have an IPE approach.

/SCHOOL OF ENGINEERING

In the School of Engineering, the **BE in Civil, Computer, Electrical, Industrial, and Mechanical Engineering** are accredited by the **Engineering Accreditation Commission of the Accreditation Board for Engineering and Technology (ABET)** and the **Federation of Arab Engineers**.

/GILBERT AND ROSE-MARIE CHAGOURY SCHOOL OF MEDICINE

The **MD program** has received provisional accreditation from the **Turkish Association for Evaluation and Accreditation of Medical Education Programs (TEPDAD)**, which is the regional representative of the **World Federation for Medical Education**. This allows LAU MD students and graduates to apply for an Educational Commission for Foreign Medical Graduates (ECFMG) certification, and is equivalent to a full accreditation in terms of opportunities provided.

/ALICE RAMEZ CHAGOURY SCHOOL OF NURSING

The **Bachelor of Science (BS) in Nursing** at the Alice Ramez Chagoury School of Nursing is accredited by the **Commission on Collegiate Nursing Education (CCNE)**.

/SCHOOL OF PHARMACY

The School of Pharmacy is a member of the **American Association of Colleges of Pharmacy (AACP)**.

Also, the LAU School of Pharmacy's **Doctor of Pharmacy (PharmD) program** is the only one outside the United States that is accredited by the **Accreditation Council for Pharmacy Education (ACPE)**. By virtue of this, the school ensures excellence in pharmacy education and our PharmD graduates are eligible for licensure as pharmacists in most states and provinces in the United States.

The **Postgraduate Year One Pharmacy (PGY1) Pharmacy Residency** conducted by the LAU School of Pharmacy and the LAU Medical Center-Rizk Hospital is accredited by the **American Society of Health-System Pharmacists (ASHP)**.

LAU ADMISSIONS PROCEDURE

ADMISSION DEADLINES

REGULAR: January 31

LATE: July 15

OFFICE HOURS

MONDAY TO FRIDAY

SEPTEMBER/MAY

8:30 a.m. – 12:00 p.m.

1:00 p.m. – 3:00 p.m.

JUNE/JULY

8:30 a.m. – 1:00 p.m.

/REQUIRED DOCUMENTS

- ☐ A completed application; *Applications can be completed online at: lau.edu/apply*
- ☐ A recent passport-size photo.
- ☐ A clear photocopy of your identity card or passports for all the nationalities you hold.
- ☐ A clear photocopy of your Family Civil Status record (*for Lebanese and Arab nationals*).
- ☐ An official high school transcript of the last three years *to be submitted to LAU's Admissions Office in a sealed and stamped envelope*.
- ☐ Official SAT I or ACT scores.
- ☐ Proof of English proficiency with submission of one of the below:
 - Official scores of the TOEFL; LAU code: 2595 (minimum score: 80)
 - Official scores of the IELTS (minimum score: 6.5)
 - English Entrance Exam (EEE) administered at LAU
View the exam schedule at: lau.edu/apply/exams
 - SAT I Writing (minimum score: 23)
 - ACT Writing (minimum score: 7)
The minimum required score is available at: lau.edu/apply/english-exam-scores.php
- ☐ Certified copies of all official certificates or diplomas. (*such as High School, Lebanese and/or French Baccalaureate*).
- ☐ Official Lebanese Baccalaureate equivalence of all non-Lebanese degrees.
- ☐ A non-refundable application fee.
For details, refer to lau.edu/fees.

Additional documents required for students applying to the freshman program.

- ☐ Permission from the Equivalence Committee of the Lebanese Ministry of Education and Higher Education to enroll in the freshman program.
- ☐ SAT minimum required score as set by the Ministry of Education and Higher Education.

NOTE: *Students will not be able to declare a major and join the sophomore class before satisfying the requirements set by the Lebanese Ministry of Education and Higher Education and the LAU freshman requirements.*

/TRANSITION PROGRAM

You may apply to certain majors in the School of Arts and Sciences and the Adnan Kassar School of Business without taking the SAT. You would still need to submit proof of English proficiency (*see required documents on the left*).

For a list of majors and more details, check out the Transition Program webpage: lau.edu/transition.
Places are limited.

/TRANSFER APPLICANTS

- Applicants who have studied at other institutions must submit official transcripts from all universities or colleges attended, along with academic catalogs.
- Applicants who have successfully completed the equivalent of at least 12 credits will not be required to sit for the SAT I or ACT.
- Applicants might be required to submit proof of English proficiency (*depending on the university or college they attended*).
- Transfer applicants coming from a university or college from which LAU does not require an English exam, and who have not taken any English courses, will have to choose one of following options:
 - a. Take Remedial English (ENG009)
 - b. Sit for the English placement test at LAU

/IMPORTANT NOTES

- All required documents will become the property of LAU and must be submitted by the set deadlines.
- Only completed applications will be evaluated.
- Fulfillment of the minimum admission requirements does not guarantee admission.
- Admission is valid for one semester only.
- Transfer of applications from one campus to the other is possible if the request is made within the set deadline.
- Applications will be considered for the first choice of major. Changing major, even after receiving acceptance, is possible if the request is made within the set deadline.

REQUIRED GRADE 12 SUBJECTS

FOR SPECIFIC MAJORS

The tables below specify the subjects required for majors according to the different diplomas.

/LEBANESE AND FRENCH BACCALAUREATE DIPLOMA HOLDERS

MAJOR	REQUIRED SUBJECTS IN GRADE 12
Architecture	Math <i>(required)</i> and Physics <i>(highly recommended)</i>
Bioinformatics <i>(pre-med)</i>	Math and Biology
Biology <i>(pre-med)</i>	Biology and Chemistry
Chemistry <i>(pre-med)</i>	Math and Chemistry
Computer Science	Math
Engineering majors	Math and Physics <i>(required)</i> Chemistry <i>(subject is desirable for BE in Petroleum Engineering)</i> <i>A GS or LS Diploma is required for holders of Lebanese Baccalaureate.</i>
Math	Math
Nutrition	Biology and Chemistry
Pharmacy	Biology and Chemistry

/IB DIPLOMA HOLDERS

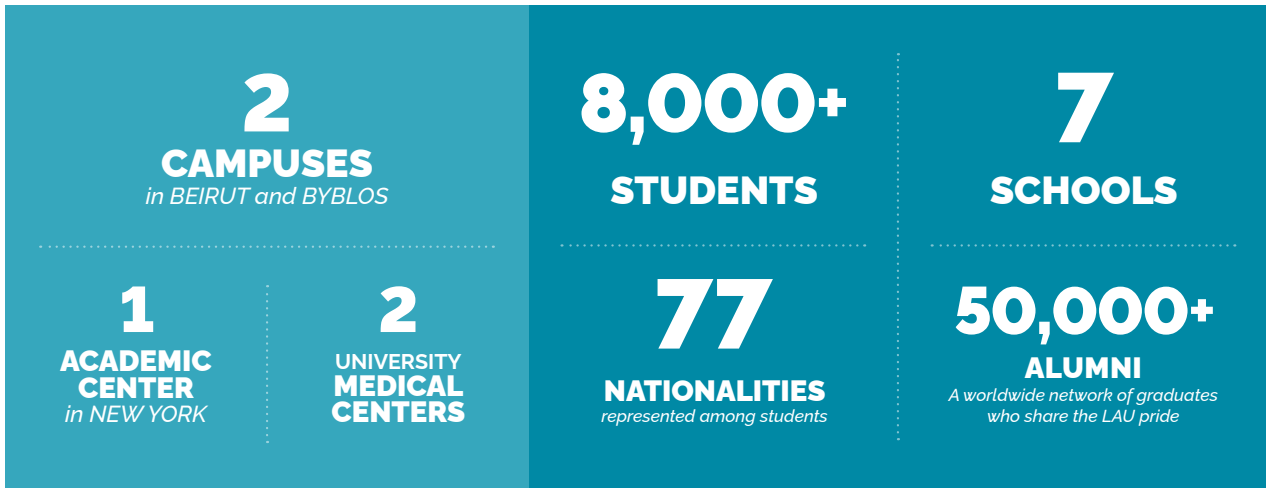
MAJOR	REQUIRED SUBJECTS IN GRADE 12
Architecture	"HL" in Math and "SL" in Physics
Biology <i>(pre-med)</i>	"HL" in Biology and Chemistry
Engineering majors	"HL" in Math and "SL" in Physics. "SL" in Chemistry is desirable for students applying to Petroleum Engineering.
Pharmacy	"HL" in Biology and Chemistry

/GCE BRITISH SYSTEM

MAJOR	REQUIRED SUBJECTS IN GRADE 12
Architecture	"A" Level in Math and "AS" in Physics
Biology <i>(pre-med)</i>	"A" Level in Biology and Chemistry
Engineering majors	"A" Level in Math and "AS" in Physics. "AS" Level in Chemistry is desirable for students applying to Petroleum Engineering.
Pharmacy	"A" Level in Biology and Chemistry

LAU AT A GLANCE

LAU operates under a charter from the Board of Regents of the University of the State of New York. As an LAU student, you will benefit from state-of-the-art technology, facilities and libraries, and ample research opportunities with faculty who are distinguished in their fields both academically and professionally.



HELPING WITH COSTS

At LAU, we believe that all eligible students should have access to excellent higher education.

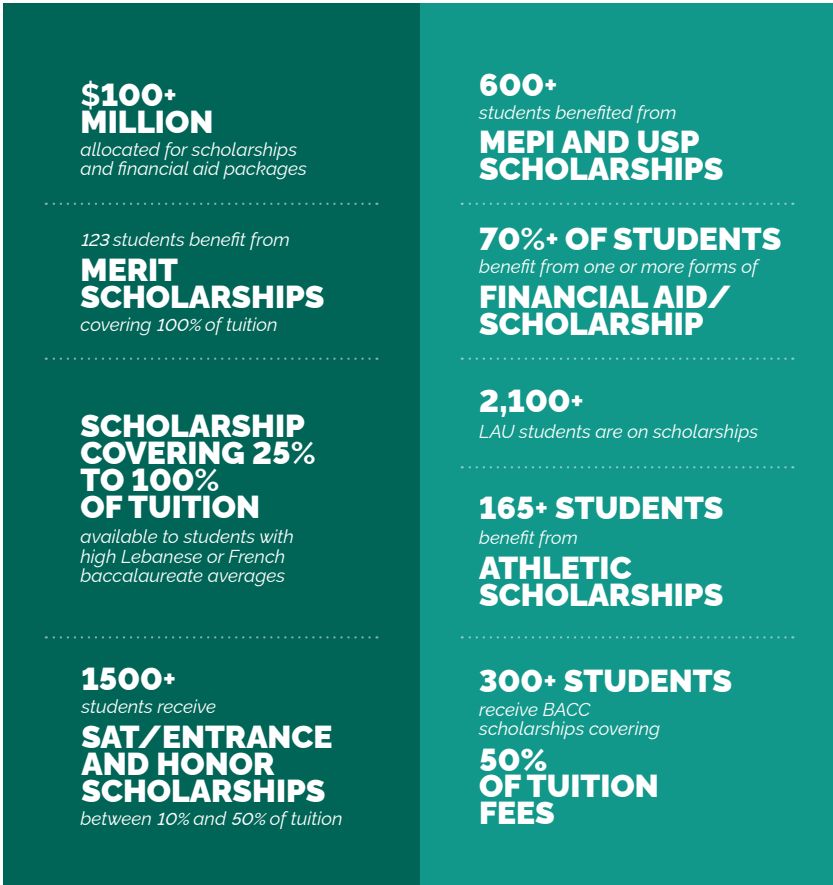
With more than \$100 million allocated for financial aid and scholarships in the upcoming academic year, LAU is committed to helping students fund their education.

Financial aid, grants and scholarships are given based on the financial need and academic qualifications of applicants, regardless of their nationality, race, gender, religion or ethnicity.

**FINANCIAL AID/
SCHOLARSHIP
COVERING UP TO**

100%
OF YOUR TUITION

lau.edu/aid
lau.edu/scholarships



GETTING IN TOUCH WITH LAU

/LAU	lau.edu	961 1-786456/Ext.	961 9-547254/Ext.
Student Recruitment Office	sro@lau.edu.lb	1491	2162
Admissions	lau.edu/apply	1355	2532
Financial Aid	lau.edu/aid	1416	2153
Scholarships	lau.edu/scholarships	1416	2153

/SCHOOLS	lau.edu/study	961 1-786456/Ext.	961 9-547254/Ext.
School of Architecture and Design	sard.lau.edu	2474	
School of Arts and Sciences	sas.lau.edu	1105	2333
Adnan Kassar School of Business	sb.lau.edu	1237	2355
School of Engineering	soe.lau.edu	2236	
Gilbert and Rose-Marie Chagoury School of Medicine	medicine.lau.edu	2849	
Alice Ramez Chagoury School of Nursing	nursing.lau.edu	2494	
School of Pharmacy	pharmacy.lau.edu	2393	



TOUR LAU CAMPUS

Visiting LAU will help you get a feel for what the university has to offer. Guests are welcome to tour LAU's campuses, meet university representatives, and dine in the cafeterias.

Visits must take place during office hours.
For more information, visit: lau.edu/apply/sro.php

BEIRUT CAMPUS

P.O. Box: 13-5053 Chouran
Beirut 1102 2801, Lebanon
Tel: + 961 1 786464
Fax: + 961 1 786454

BYBLOS CAMPUS

P.O. Box: 36
Byblos, Lebanon
Tel: + 961 9 547254
Fax: + 961 9 546560

NEW YORK HEADQUARTERS & ACADEMIC CENTER

211 East 46th Street
New York, NY 10017-2935, USA
Tel: + 1 212 203 4333
Fax: + 1 212 784 6597

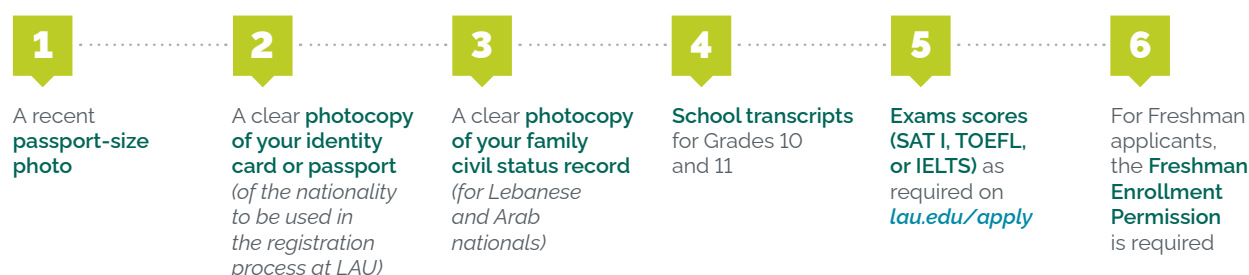
APPLY ONLINE TO LAU

For questions, contact us:
at admissions.beirut@lau.edu.lb
or admissions.byblos@lau.edu.lb
visit: lau.edu/apply

STEPS FOR FIRST-TIME APPLICANTS (*Freshman and Sophomore*)

APPLY THROUGH LAU

/STEP 1: PREPARE AND SCAN THE REQUIRED DOCUMENTS



Guidelines for uploading documents lau.edu/documents

/STEP 2: LOG IN TO APPLY ONLINE



/STEP 3: PAY THE APPLICATION FEE



/WHAT'S NEXT?

After filling out the application and paying the fee, **you will receive an email within 3 to 10 working days** to the email address specified in the application, to activate your Portal account, apply for financial aid, and register for the EEE (English Entrance Exam) if you need to. **Make sure to check your junk or spam folder!**

OR APPLY ONLINE THROUGH COMMON APP



If you are **residing outside Lebanon**, you can apply online using Common App at commonapp.org

BEIRUT CAMPUS

P.O. Box: 13-5053 Chouran
Beirut 1102 2801, Lebanon
Tel: +961 1 786464 (Ext. 1355)
Fax: +961 1 786454
admissions.beirut@lau.edu.lb







BYBLOS CAMPUS

P.O. Box: 36
Byblos, Lebanon
Tel: +961 9 547254 (Ext. 2532)
Fax: +961 9 546560
admissions.byblos@lau.edu.lb

NEW YORK HEADQUARTERS AND ACADEMIC CENTER

211 East 46th Street
New York, NY 10017-2935, USA
Tel: +1 212 203 4333
Fax: +1 212 784 6597

lau.edu.lb

-  [LebamERICANuni](#)
-  [LebaneseAmericanUniversity](#)
-  [LAU - Students](#)
-  [LebaneseAmericanUniv](#)
-  [Lebamuniv](#)
-  [lebamuni](#)

