

THE LEBANESE AMERICAN UNIVERSITY **SUSTAINABLE DEVELOPMENT GOALS**

REPORT



CONTENTS

INTRODUCTION	3
GOAL 1 NO POVERTY	4
GOAL 2 ZERO HUNGER	8
GOAL 3 GOOD HEALTH AND WELL-BEING	10
GOAL 4 QUALITY EDUCATION	14
GOAL 5 GENDER EQUALITY	24
GOAL 6 CLEAN WATER AND SANITATION	28
GOAL 7 AFFORDABLE AND CLEAN ENERGY	30
GOAL 8 DECENT WORK AND ECONOMIC GROWTH	32
GOAL 9 INDUSTRY, INNOVATION AND INFRASTRUCTURE	38
GOAL 10 REDUCED INEQUALITIES	42
GOAL 11 SUSTAINABLE CITIES AND COMMUNITIES	48
GOAL 12 RESPONSIBLE PRODUCTION AND CONSUMPTION	52
GOAL 13 CLIMATE ACTION	56
GOAL 14 LIFE BELOW WATER	60
GOAL 15 LIFE ON LAND	62
GOAL 16 PEACE, JUSTICE AND STRONG INSTITUTIONS	64
GOAL 17 PARTNERSHIPS FOR THE GOALS	68

PUBLICATION CREDITS

- Editor: **Mirna Bassil Khalife**
- Assistant to the President for Institutional Research and Assessment: **Diane Nauffal, Ph.D.**
- Senior Assessment Officer: **Nadine Wehbe**
- Lead Director of Integrated Marketing Communications: **Karina Rodriguez**
- Published: **November 2023**

GRAPHICS

- Designer: **Marianne Ziadeh**
- Photos: **Courtesy of LAU**
- SDG Icons: United Nations Sustainable Development (2016). [Online] Available at: <https://www.un.org/sustainabledevelopment/news/communications-material/>
- Copyright: Lebanese American University; P.O. Box 13-5053; Chouran Beirut: 1102 2801; Lebanon





INTRODUCTION

LAU is at the forefront of championing sustainability, actively working to address the critical challenges outlined in the 17 Sustainable Development Goals (SDGs) set forth by the United Nations. These goals represent a global call to action for addressing pressing issues affecting both humanity and the environment.

At the heart of our mission lies the profound recognition of the crucial role that higher education institutions must play in disseminating knowledge and actively pursuing the objectives articulated in the "Transforming our world: the 2030 Agenda for Sustainable Development." Sustainability forms the core of our mission and is operationalized through a comprehensive approach that encompasses education, research, community engagement, outreach, responsible operational practices, and strong governance principles. These pillars collectively underpin our ongoing efforts to make a substantial impact on social and environmental sustainability within institutions of higher learning.

Education serves as a fundamental starting point for our sustainability journey. Within our educational programs, we impart to our students the importance of sustainability, making it a priority within our curricula. This commitment empowers students with the knowledge and skills essential for addressing global challenges and instills in them a strong sense of responsibility toward sustainable development.

LAU actively engages in groundbreaking research initiatives aligned with the SDGs. Our research initiatives go beyond mere exploration. Our aim is to deliver innovative solutions that produce tangible impacts in addressing complex problems.

LAU leads by example through its operational practices. We adhere to sustainable practices, actively reducing our environmental footprint and ensuring responsible resource management. Our campus is a living testament to our dedication to sustainability, serving as an inspiration for others.

Sustainability is not a solitary endeavor. It is a collective journey that requires collaboration with diverse stakeholders from the public, private, and non-governmental sectors, as well as individuals at local, national, and international levels. Effective governance practices are instrumental in coordinating and overseeing our sustainability efforts, ensuring their alignment with our mission.

While we recognize the methodological complexities and inherent limitations in achieving a significant sustainability impact, our resolve remains unshakable. We are committed to transparency, acknowledging our challenges, and continuously striving for improvement. This narrative is more than an exploration of our efforts; it also serves as an inspiration for generating novel ideas, taking decisive actions, and exploring opportunities for collaboration and partnerships that can enhance our institution's ability to address the world's most critical environmental and social challenges.

DIANE NAUFFAL

*Assistant to the President
for Institutional Research & Assessment*

GOAL

1

NO
POVERTY

1 NO
POVERTY



*End poverty in all
its forms everywhere*

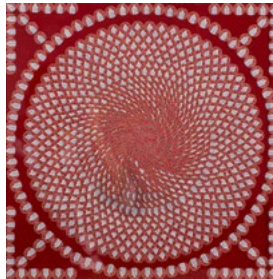
15

Scholarly
Output

OPERATIONS

ARTSRISING

Believing that all people must access quality education, regardless of their financial situation, an **online art auction** was organized to support the LAU Emergency Financial Aid Fund which helped students who risk losing out on their education because of the financial hardship posed by the economic crisis in Lebanon.



The auction featured a wide range of multimedia art by notable LAU alumni and faculty artists as well as friends of the university, including renowned Lebanese painter Chaouki Chamoun, Department of Art & Design Chair Hannibal Srouji, alumna Mona Hatoum, and alumna Rana Raouda. All proceeds from the auction went toward funding current and prospective students.

AN ALUMNUS WANTS LEBANESE YOUTH TO SUCCEED

Wissam Moukahal, an LAU alumnus, is a Lebanese businessman and philanthropist who is passionate about helping young people in his country succeed. Believing that education is the key to **breaking the cycle of poverty** and creating a better future for Lebanon, he supported a number of educational initiatives in Lebanon, including the LAU Emergency Financial Aid Fund, which helps students who risk losing out on their education because of the financial hardship posed by the economic crisis. He has also donated to establish the Wissam Moukahal Scholarship Fund at LAU, which provides scholarships to students from disadvantaged backgrounds.

FUNDRAISING GALA

The “Give to learn, Give to Live” gala was a remarkable night of philanthropy in support of student financial aid and cancer care at Lebanese American University. At LAU, we are steadfast in our promise to make education accessible to students from all walks of life and backgrounds through our robust financial aid program and array of scholarships. We aim to make a profound impact on the lives of deserving and talented students, helping them to pursue their education goals through our financial aid.

POVERTY ERADICATION AND SUSTAINABLE DEVELOPMENT

In order to face a devastating political and economic crisis, a global pandemic, and a devastating explosion, LAU launched an Emergency Financial Aid Fund to support its students, more than 70% of whom demonstrated new financial need. The fund provides partial scholarships to help students cover the cost of tuition.

We add this fund to our already existing financial aid and scholarships and our Higher Education Scholarships.

By providing financial aid to students, the LAU Emergency Financial Aid Fund is helping to ensure that all students have the opportunity to receive a quality education regardless of their financial situation. This is essential for building a more just and equitable society and promoting social mobility.



Trends in Financial Aid

	2017 – 2018	2018 – 2019	2019 – 2020	2020 – 2021	2021 – 2022
Financial Aid	\$31,720,027.92	\$35,494,170.66	\$42,525,173.83	\$67,212,871.21	\$79,566,670.36
FAFSA	\$395,329.00	\$385,627.00	\$413,399.00	\$413,399.00	\$37,033.00
Graduate Assistantships	\$1,948,183.40	\$2,009,265.86	\$2,333,465.06	\$4,707,265.97	\$3,183,981.93
Total	\$34,063,540.32	\$37,889,063.52	\$45,272,037.89	\$72,333,536.18	\$82,787,685.29

PUBLIC ENGAGEMENT

DISCUSSING INTERNATIONAL FUNDS AND ECONOMIC REFORM AFTER BEIRUT'S BLAST

Following the devastating explosion in Beirut on August 4, 2020, we hosted a webinar to discuss the role of international funds and economic reform in Lebanon's recovery.

The panelists discussed the challenges facing Lebanon's economy, including a large budget deficit, high public debt, and a weak banking sector. They also discussed the potential benefits of international aid and the need for economic reforms.

The panelists agreed that international aid and economic reforms are essential for Lebanon's long-term recovery. However, they also recognized that reforms will be difficult to implement.

LEBANON'S FINANCIAL RECOVERY PLAN: A STEP TOWARDS NO POVERTY

LAU hosted Deputy Prime Minister Saade Chami for an interactive discussion on Lebanon's financial recovery plan. The event was an opportunity for the general public to learn more about the plan and to voice their concerns.

Chami discussed the challenges facing Lebanon's economy and the steps needed to resolve the crisis. He emphasized the importance of macroeconomic stability, fighting corruption, and reforming state-owned enterprises.

Chami also addressed the issue of bank losses. He said that the government is committed to respecting the hierarchy of claims, which starts with looking into the commercial banks' capital. Existing shareholders and some of the depositors can take part in securing recapitalization for the banks.

Chami acknowledged the persistence of public mistrust in the government, but he was adamant that there was hope for a deal with the IMF. He said that the country could be put on the right path in a matter of a few months and that Lebanon could begin to get out of the crisis within five years.

Lebanon-specific research and panel discussions called for meaningful interventions that can mitigate food waste generation and its repercussions.



REDUCING FOOD WASTE

LAU and AUB researchers have found that an estimated 1,620 tons of food are wasted by people dining out in Beirut every year. This produces the equivalent of 4,110 tons of carbon dioxide and contributes to the country's solid waste-management crisis.

A panel discussion on "Combating Food Waste for Improved Food Security in Lebanon" was held on International Awareness Day for Food Loss and Waste. The panelists agreed that the best approach to combat food waste is by spreading awareness on its economic, environmental, and social impact to influence behavioral change.

LAU Associate Professor of Food Science Hussein F. Hassan described Lebanon's current crisis as "a golden opportunity for us to address food waste and to change our attitudes and behaviors." He gave practical tips such as logging food waste, meal planning, following recipes accurately, avoiding impulsive buying or shopping for food when hungry, checking for expiry and best-before dates, and sharing and donating surplus food.

By reducing food waste, we can improve food security and reduce poverty.

DEVELOPING LEADERSHIP POTENTIAL OF THE STUDENTS

LAU's USAID Higher Education Scholarship allows academically qualified but financially underprivileged Lebanese students from public high schools to attend the university. The program aims to provide quality education in various majors and develop the leadership potential of the students, providing them with the skills necessary to build their communities.

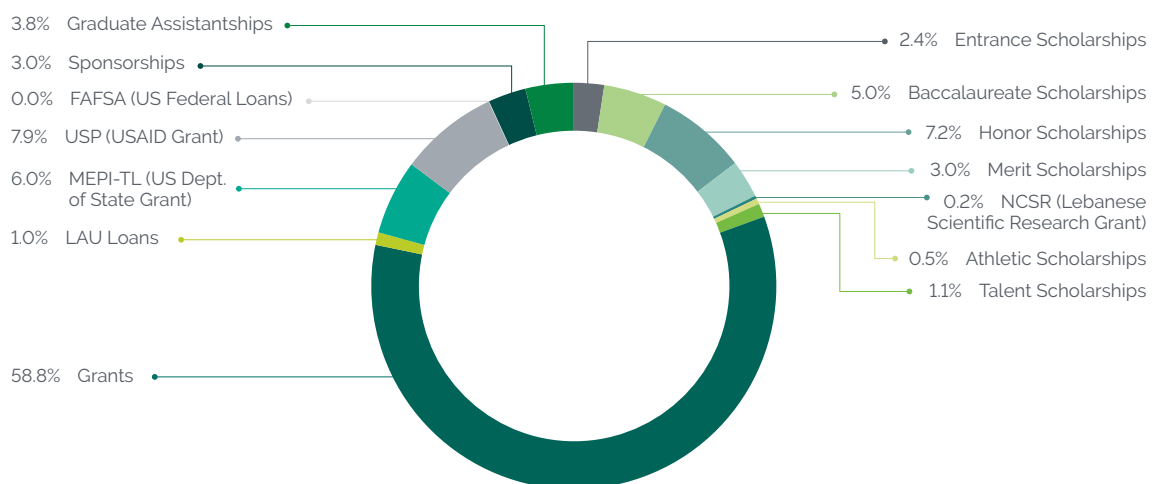
Social entrepreneurship is a powerful tool for poverty reduction. Social entrepreneurs develop innovative businesses that address social and environmental problems. The Basic Living Skills Program-BLSP empowers business students to become social entrepreneurs and develop businesses that can help to create jobs and improve the lives of the poor.

Sustainable business practices are essential for long-term poverty reduction. They use resources efficiently and minimize their environmental impact. The BLSP program educates students on sustainable business practices and helps them to develop social business projects that are sustainable in the long term.

The BLSP program supports social mobility. By providing students from all backgrounds with the opportunity to learn about social entrepreneurship and develop their own social business projects, the BLSP program is helping to create a more equitable society where everyone has the opportunity to succeed.



Student Financial Aid Program



IMPROVING THE LIVES OF WOMEN LIVING IN POVERTY

Our *Qudwa* Basic Living Skills Program, meaning "role model" in Arabic, is a significant non-formal educational initiative aimed at illiterate and semi-literate women in the Arab world. It aims to improve the lives of those living in poverty. *Qudwa* stands out due to its unique characteristics that make it highly effective in empowering Arab women.

Over the years, more than 60,000 women in Lebanon have benefited from the program and more than 10,000 women and men have been trained on its use and implementation. The program has been used continuously by several non-governmental organizations and it has been adopted by the Ministry of Social Affairs in all its centers in the different regions of Lebanon. *Qudwa* has also expanded to the Arab world (Egypt, Sudan, Jordan, Palestine, Kuwait, and Yemen).

BUILDING STRATEGIC ALLIANCES WITH INDUSTRIES

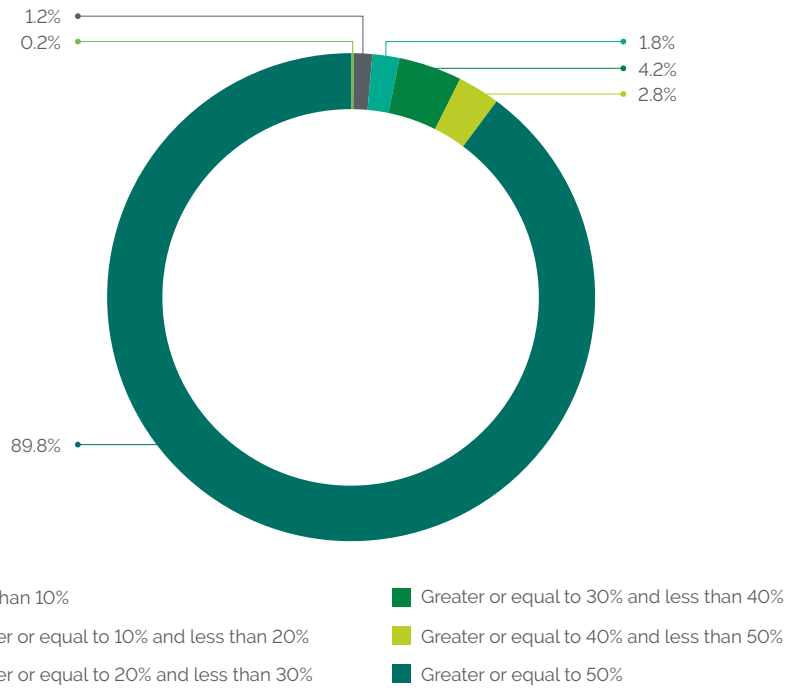


Forty-six LAU Tomorrow's Leaders (TL) students got the opportunity to take the lead in pitching their innovative projects to the TLP Team Leaders and start-up CEOs covering a large spectrum of areas ranging from medical, transportation, and agriculture, to robotics, artificial intelligence, and virtual reality. The TLP workshop focused on increasing students' employability, entrepreneurship skills, and innovation, and on bridging the gap between skills sought after by employers and skills taught at universities. As President, Dr Michel E. Mawad said: "There is no priority today more pressing for the university than building strategic alliances with industries within Lebanon and well beyond. Such alliances represent an essential infrastructure for R&D capacity building in pursuit of a knowledge economy where your ideas become fragments of imagination and find their way to reality. We want you to be entrepreneurs and we want your imagination to go wild."

NEW LINKS WITH LEBANON'S PUBLIC ADMINISTRATION

We signed a partnership agreement with the Lebanese Customs, following similar agreements with other governmental institutions. The university will offer tuition grants for officers, members, and retirees, as well as their spouses and children, thus providing access to LAU undergraduate, graduate, and continuing education programs. Customs will provide internships for LAU students, and may sponsor academic conferences.

Distribution of Financial Aid Awards



THROWING A LIFELINE TO RESOURCEFUL RURAL WOMEN

Martine Zaarour is a LAU alumna who founded Love in a Jar, a social enterprise that empowers women in rural areas by selling their homemade products online. She shares her story of how she turned her passion for food and social justice into a successful business. In co-founding Jar Thuraya, she saw an opportunity to keep this practice alive, while throwing a lifeline to resourceful rural women, and preserving an essential part of the Lebanese cuisine. Martine explains how she sources her ingredients from local farmers, trains her team of women on quality standards and marketing skills, and uses social media to reach a wider audience. She also talks about the challenges and opportunities of running a social enterprise in Lebanon, and her plans for the future.



GOAL

2

ZERO HUNGER



End hunger, achieve food security and improved nutrition and promote sustainable agriculture

29

Scholarly Output

RESEARCH

DR. HUSSEIN HASSAN COLLABORATES WITH UN ON FOOD WASTE REPORT

Dr. Hussein Hassan, in collaboration with the United Nations, has contributed to a report on food waste, aligning with SDG 2 (Zero Hunger). The report highlights critical issues surrounding food waste and its impact on food security. It underscores the urgent need to reduce food waste to address global hunger challenges. For more details on Dr. Hassan's research and its implications, please visit [this article](#).



PUBLIC ENGAGEMENT

COMBATting FOOD WASTE FOR IMPROVED FOOD SECURITY IN LEBANON

Researchers from LAU and AUB joined forces to study the drivers and impact of food waste at the household and hospitality levels, and proposed solutions to reduce it. These solutions include spreading awareness, adopting laws and incentives, donating surplus food, and organizing competitions.

SEED PACKETS

Michael Haddad, a UNDP Goodwill Ambassador and professional athlete, embarked on an Arctic Walk to address climate resilience and food security. He's delivering a "Package of Hope" to the Svalbard Global Seed Vault, containing seeds from 12 Arab countries and a book by Pope Francis. Haddad emphasizes the importance of safeguarding genetic diversity to combat

the climate crisis and ensure food security in the Arab region. The initiative involves collaboration with UN organizations, and Haddad will use a specially designed exoskeleton for the walk.

In coordination with the UN Food and Agriculture Organization (FAO), the International Center for Agricultural Research in the Dry Areas (ICARDA) prepared for Haddad the seed packets as part of the official seed stocks from Algeria, Egypt, Iraq, Jordan, Lebanon, Libya, Morocco, Oman, Palestine, Syria, Tunisia, and Yemen, to be deposited in the Svalbard vault. The specially prepared packages include wild relatives of wheat, barley, lentils, chickpeas, and other forage legumes.



FOR SAFE AND HEALTHY FOOD

Associate Professor of Food Science and Technology [Hussein Hassan](#) offered tips for storage methods and purchasing habits that can help alleviate the problem. [This article](#) came at a critical phase in Lebanon where power outage is a major concern. By following the tips in the article, everyone can help to reduce the incidence of food poisoning and other health problems, and ensure that everyone has access to safe and nutritious food.

FOOD SECURITY IS NOT AN IMPOSSIBILITY

This [panel discussion](#) jointly organized by LAU and AUB on September 29, International Awareness Day for Food Loss and Waste was titled [Combating Food Waste for Improved Food Security in Lebanon](#). The event brought together Director General of the Lebanese Ministry of Economy and Trade Mohamad Abou Haidar, International Specialist-Resource Efficiency and Sustainable Consumption and Production at UNEP Regional Office for West Asia Paolo Marengo, as well as Dr. Hassan and Dr. Abiad. The panel discussed the issue of food waste generation and its impact on food security. It highlighted that one-third of all

food produced worldwide is either wasted or lost every year, and that 61 percent of this waste happens in households. It also mentioned that the gravity of food insecurity has been exacerbated by the multifaceted socioeconomic crisis and power outages in Lebanon. To combat this issue, the conference suggests raising awareness about food waste generation and its impact on food security, educating people about how to keep their food safe during power cuts.



A conference featured a keynote address by UN Under Secretary General and Executive Director for UN Women Sima Bahous and panel discussions led by gender experts, as well as poster and oral presentations by Tomorrow's Leaders Gender Scholars (TLS) who reflected on their experiential and evidence-based learning, and recommended strategies and policies for realizing equality, peace, development and sustainable gender equity. It highlighted the challenges that women and girls face in accessing resources and opportunities, and provided solutions to promote gender equity and improve food security. Universities can play a role in this effort by educating students, supporting research, and partnering with communities.

LEARNING & STUDENTS

CAMPING AROUND THE SUSTAINABLE DEVELOPMENT GOALS

This was a unique initiative that aims to [raise awareness and inspire action](#) among Lebanese youth on the global challenges of poverty, hunger, health, education, climate change, and more. The program, organized by LAU's Outreach and Civic Engagement unit and the UN Information Centre in Beirut, brought together students from different backgrounds and regions to participate in a three-day camp that combines learning, fun, and social responsibility. Through interactive workshops, games, simulations, and field visits, the participants learn about the 17 SDGs and how they can contribute to achieving them in their communities and beyond.

WOMEN'S ECONOMIC EMPOWERMENT

The student panel of the second annual MEPI-TLS Conference on Sustainable Gender Equality was titled: ["Ensuring a Safe and Inclusive Workplace for a More Sustainable Development."](#) The conference brought together scholars, experts, and policymakers to discuss the challenges and opportunities for sustainable gender equality. The conference highlighted the importance of sustainable gender equality. Women and girls play a vital role in agriculture, food production, and nutrition, but they often face discrimination in terms of access to resources and opportunities especially in the Arab World. The MEPI-TLS program is a collaboration between LAU and the Arab Institute for Women (AiW) that aims to empower women and girls to become leaders and change-makers in their communities.

GOAL

3

GOOD HEALTH & WELL-BEING

3 GOOD HEALTH AND WELL-BEING



Ensure healthy lives and promote well-being for all at all ages

560

Scholarly Output



RESEARCH

INSTITUTIONAL QUALITY KEY TO REDUCING FEMALE FATALITY FROM COVID-19

A new [study](#) has found that institutional quality is key to reducing female fatality from COVID-19. The study, which examined data from 57 countries, found that a 1 percent increase in institutional quality led to a 0.572 percent to 0.839 percent decrease in the female mortality rate from COVID-19.

Our researchers also found that other factors, such as GDP, female education, and health infrastructure, also played a role in female mortality from COVID-19. For example, a 1 percent increase in GDP led to a 0.127 percent to 0.139 percent increase in the female mortality rate, while a 1 percent increase in female education led to a 0.784 percent to 1.196 percent increase in the female mortality rate.

Our researchers believe that their findings have a number of important implications for policymakers. They suggest that, besides focusing on improved institutional quality, policymakers should also invest in female education and health infrastructure in order to further reduce female mortality from COVID-19.

LAU STUDY FINDS DELTA VARIANT HIGHLY TRANSMISSIBLE AND DOMINANT IN LEBANON

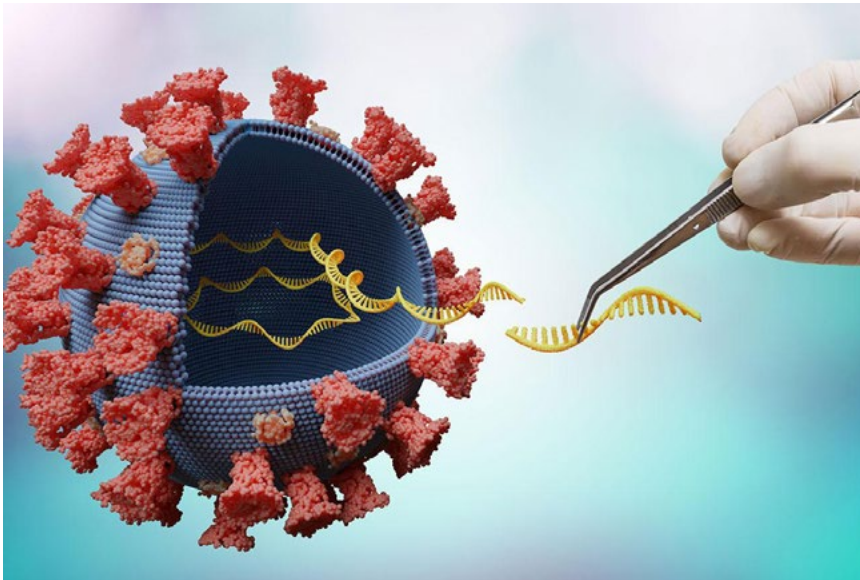
Researching the most pressing health matters in 2021–2022 have led our researchers to study the Delta variant of SARS-CoV-2.

The [study](#) has found that the Delta variant of SARS-CoV-2 has become the dominant strain in Lebanon, replacing the Alpha variant over a span of just six weeks. It also found that the Delta variant is highly transmissible, which is why it has spread so quickly.

The researchers sequenced the genomes of over 200 SARS-CoV-2 samples from Lebanon and found that all of the samples sequenced in June and July belonged to the Delta variant. This suggests that the Delta variant was introduced to Lebanon in late May or early June and quickly became the dominant strain.

The researchers also found that the Delta variant is more transmissible than the Alpha variant. This is likely due to a number of factors, including the Delta variant's ability to replicate more efficiently in the body and its ability to evade the immune system.

The findings of this study highlight the need for people to remain cautious and to adhere to public health measures, such as wearing masks, social distancing, and getting vaccinated. The Delta variant is highly transmissible and can cause serious illness in unvaccinated people.



RESEARCH ADVANCING HEALTHCARE AND WELL-BEING: ANTI-INFLAMMATORY PROPERTIES OF LEBANESE CANNABIS

An interdisciplinary collaboration between LAU researchers from the School of Pharmacy, the Gilbert and Rose-Marie Chagoury School of Medicine, and the School of Arts and Sciences have found that Lebanese cannabis oil extract (COE) possesses anti-inflammatory properties in animal models. The [study](#), published in the Journal of Ethnopharmacology, is the first applied research on Lebanese cannabis since 1984.

Our researchers found that COE reduced inflammation and edema in chronic paw edema of Sprague Dawley rats, comparable to the effects of dexamethasone, a potent corticosteroid. They also identified the chemical constituents of COE responsible for its anti-inflammatory effects, mainly cannabidiol (CBD) and tetrahydrocannabinol (THC).

This research provides evidence that Lebanese COE may be a promising new treatment for inflammatory diseases, which are a major cause of morbidity and mortality.

OPERATIONS

SMOKE-FREE CAMPUS: A COMMITMENT TO HEALTH AND SUSTAINABILITY AT LAU

We implemented on our [code of conduct](#) the smoke-free policy. We are committed to providing a healthy and sustainable environment for our students, faculty, staff, and visitors. This policy prohibits smoking of all types of tobacco products, including cigarettes, cigars, pipes, and e-cigarettes, on all LAU campuses.

In addition to protecting health, a smoke-free campus also promotes sustainability. Cigarette butts are the most common form of litter in the world, and they can take up to 15 years to decompose. By banning smoking on campus, LAU is helping to reduce litter and protect the environment.

ENGAGING OUR FACULTY & STAFF AS ASSOCIATES IN THE MENTAL HEALTH SUPPORT SYSTEM

A referral guide has been shared with faculty and staff who play an important role in detecting and helping distressed students. Identifying and responding to students in distress is not an easy job; it can be confusing and overwhelming. Hence, the University Counseling Office has prepared [this guide](#) that sheds some lights on the different signs and symptoms of distress; its purpose is to guide the faculty and staff in handling a problem until a referral to the counseling office can be arranged.



PROGRAM TO REDUCE ANXIETY IN CHILDREN UNDERGOING ANESTHESIA

Anxiety is common in children undergoing surgery, and it can have a negative psychological impact beyond the perioperative period. To address this challenge, our Anesthesiology Department at the LAU Medical Center-Rizk Hospital has launched an **immersive virtual reality** program to help reduce anxiety in children undergoing surgery. The program, which was made possible by a generous donation from CHANCE Association, provides children with a fun and engaging experience that takes their minds off of the surgery, leading to improved surgical outcomes. Those virtual devices are the first to be used in hospitals in Lebanon to alleviate the pain and anxiety of children undergoing medical procedures.

PUBLIC ENGAGEMENT

OUR PHARMD STUDENTS BRING HOME SOLID VACCINATION EXPERIENCE

LAU PharmD students gained valuable **vaccination experience** and skills during their rotations at Houston Methodist Hospital in Texas and LAU Medical Center-Rizk Hospital in Lebanon. This experience prepared them to play a vital role in public health, both in Lebanon and abroad.



COLLABORATION ON INNOVATIVE EXOSKELETON TO IMPROVE MOBILITY FOR PARAPLEGICS

Our researchers and Michael Haddad, a professional endurance athlete paralyzed from the chest down, have been collaborating for seven years to develop an innovative exoskeleton that could improve mobility for paraplegics.

The exoskeleton is designed to be lighter and more affordable than traditional exoskeletons, and it is powered by the user's own movements. It is also designed to be used as a training tool, helping paraplegics rebuild muscle strength and improve balance.

The project has broken new ground in research and innovation, and it has the potential to lead to the development of new neurorehabilitation programs that combine physical training and brain training.

FOOD SCIENCE EXPERT OFFERS TIPS ON FOOD SAFETY DURING POWER CUTS

LAU Associate Professor of Food Science and Technology Hussein Hassan offers **tips** on how to safely store and consume food during power cuts, which were becoming increasingly common in Lebanon due to the fuel crisis.

ANNUAL PHARMACY RESIDENCY CONFERENCE 2022: COLLABORATION AND INNOVATION IN PHARMACY PRACTICE

The Annual Pharmacy Residency Conference 2022 was a joint event hosted by the American Society of Health-System Pharmacists (ASHP) accredited pharmacy residency programs in Lebanon: LAU School of Pharmacy, LAU Medical Center-Rizk Hospital and American University of Beirut Medical Center. Residents from both programs presented their research findings, which covered a range of topics relevant to pharmacy practice in Lebanon and globally.

PAVING THE WAY FOR RESEARCH-DRIVEN CARE LAU MED III STUDENTS HOST SYMPOSIUM ON BREAST CANCER

Third-year medical students at LAU's Gilbert and Rose-Marie Chagoury School of Medicine organized a **symposium** on breast cancer that featured leading national and international experts. The event explored the latest data, screening technology, and research in the field, with the aim of bridging the gap between research and clinical practice.

LAU JR. NBA RETURNS TO INSPIRE AND SHAPE YOUNG BASKETBALL PLAYERS IN LEBANON

The LAU Jr. NBA League returned for its **third edition** on July 29, 2023, bringing together over 350 young basketball players from 30 Lebanese athletic academies. The program, in partnership with the National Basketball Association (NBA), aims to instill core values of the game in young players and help them take their talent to the next level.



TRAINING MOPH RESEARCHERS AND STUDENTS ON SARS-COV-2 SEQUENCING, BOOSTING PUBLIC HEALTH CAPACITY IN LEBANON

LAU has secured a WHO grant to **train two researchers** from the Ministry of Public Health and 30 LAU senior biology students on SARS-CoV-2 sequencing and data analysis at LAU's Pathogenomics Lab. This training will boost Lebanon's public health capacity to track and respond to emerging COVID-19 variants.

LEARNING & STUDENTS

DRAMA THERAPY TO IMPROVE WELL-BEING AND BOLSTER SOCIAL AND TEAM SKILLS

The Alice Ramez Chagoury School of Nursing at LAU organized a **drama therapy workshop** for nursing students, led by renowned actress Zeina Daccache. The workshop provided students with a safe space to express their feelings and bolster their social and team skills. This initiative is another example of LAU's commitment to the UN Sustainable Development Goals, specifically SDG 3: Ensure Healthy Lives and Promote Well-Being.

SEXUAL AND REPRODUCTIVE HEALTH-CARE SERVICES

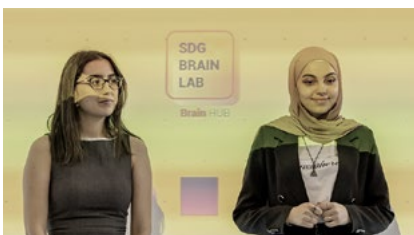
Both campuses of LAU include fully-staffed Health Clinics with nurses and medical doctors on a rotating basis. They provide LAU community members with compassionate health-care services including information, treatment and education services such as reproductive health issues.

As part of **our nursing curriculum**, students learn about sexual and reproductive health in several nursing courses.

LAU students are eligible for a wellness care visit at the LAU Health Clinics, free of charge, once a year. The wellness visit is a psychosocial assessment and physical exam done by a family medicine physician during which comprehensive sexual education including prevention of sexually transmitted infections and promotion of safe sex practices, is provided.

STUDENTS WIN TOP PRIZES AT SDG BRAIN LAB

Two LAU student teams took **first and second prizes** at the Sustainable Development Goals Brain Lab competition, organized by the UN Global Compact Network Lebanon. The first prize winners proposed a digital solution for cancer patients and their caregivers, while the second prize winners designed an app to help children with attention deficit hyperactivity disorder (ADHD). These innovative solutions address SDG 3 (Ensure healthy lives and promote well-being for all at all ages) and SDG 4 (Quality education) respectively.



COMBATting VACCINE HESITANCY AND PREPARING FOR REAL-LIFE PATIENT INTERACTIONS

Pharmacy students at LAU participated in a **creative learning project** to combat vaccine hesitancy and prepare for real-life patient interactions. The project challenged students to develop and deliver a persuasive message about the importance of vaccination, using their knowledge of disease and drug information as well as their communication skills.

CLINICAL AFFILIATES

The Alice Ramez Chagoury School of Nursing (ARCSON) has established **affiliation agreements** with a variety of high-quality healthcare settings and organizations that deliver health and community services throughout Lebanon. This ensures that our nursing students have access to a diverse range of clinical experiences, preparing them to provide comprehensive and compassionate care to patients and their families in a variety of settings.

In addition to our long-established clinical affiliates, we have recently expanded our network to include new clinical sites in different governorates of Lebanon. This expansion allows us to accommodate the needs of our growing student body and to ensure that our students have access to a wide range of clinical experiences.

We are proud to partner with our clinical affiliates to provide our students with the highest quality clinical education. Our clinical faculty work closely with our affiliates to ensure that our students are receiving the best possible learning experiences and that they are prepared to provide the highest quality of care to their patients.

Within the Promotion of Healthy Lifestyles clinical intensive course (NUR 443), ARCSON organized community health fairs in collaboration with the Byblos

municipality, Al Salamah Al Ahli Primary Health Care Center, and SAID NGO in Byblos.

OUR STUDENTS RESEARCH MICROPLASTIC POLLUTION AROUND PALM ISLANDS NATURAL RESERVE

Microplastics are tiny pieces of plastic that are less than 5 millimeters in length. They can come from a variety of sources, including synthetic clothing, personal care products, and industrial waste. Microplastics can pollute the environment and harm wildlife, including marine animals.

A group of LAU students conducted **research on microplastic pollution** around the Palm Islands Natural Reserve in Lebanon. The students found microplastics in all of the samples they collected, including water, sediment, and marine organisms. The most common types of microplastics found were polyethylene, polypropylene, and polystyrene.

The students' research highlights the growing problem of microplastic pollution in Lebanon and the need for further research to understand its impact on the environment and human health.

260 graduates in health-related professions out of 2146 in AY 2021-2022

GOAL

4

QUALITY EDUCATION

4 QUALITY EDUCATION



Ensure inclusive and equitable quality education and promote lifelong learning opportunities for all

59

Scholarly Output

RESEARCH

LAU'S EXOSKELETON PROJECT: A SHINING EXAMPLE OF SDG 4 IN ACTION

The LAU's seven-year collaboration with Michael Haddad aims to develop an exoskeleton that has the potential to help paraplegics walk independently, which would be a major breakthrough in the field of rehabilitation engineering. It provides valuable learning opportunities for engineering students who have been involved in all aspects of the project, from designing and building the **exoskeleton** to testing and improving it. This hands-on experience is essential for preparing students for careers in engineering and other fields.

OPERATIONS

EQUALITY IN QUALITY EDUCATION

Lebanon suffered a devastating political and economic crisis, a global pandemic, and a shocking explosion. To face these challenges, LAU launched an **Emergency Financial Aid Fund** to support its students, more than 70% of whom demonstrated new financial need. The fund provides partial scholarships to help students cover the cost of tuition and aims to ensure that all students have the opportunity to receive a quality education, regardless of their financial situation. This is essential for building a more just and equitable society and promoting social mobility.

FUNDRAISING EVENT FOR THE EMERGENCY FINANCIAL AID FUND

We held our first-ever virtual **fundraising event**, "Arts Rising" for the LAU Emergency Financial Aid Fund in support of students who are struggling to afford their tuition due to the ongoing economic crisis in Lebanon.

The LAU Emergency Financial Aid Fund was established in 2019 to help students who are facing financial hardship due to the economic crisis. The fund provides financial assistance to students who are unable to afford their tuition, fees, or living expenses.

GRADUATE PROGRAM SCHOLARSHIPS

Our [Graduate Program Scholarships](#) are available to students who are pursuing a master's degree at LAU in a variety of fields, including business, education, engineering and the humanities.

LAU offers a variety of scholarships to its graduate students, including merit-based scholarships, need-based scholarships, and scholarships for specific programs or fields of study. The Graduate Program Scholarships are awarded to students who have demonstrated academic excellence and leadership potential.



ALUMNA MARTINE ZAAROUR SHARES LOVE IN A JAR

Alumna Martine Zaarour's passion for cooking and her desire to share her love with others led her to create her own business, [Jar Thuraya](#), a "community of Lebanese Super Women" who "make handcrafted gourmet delicacies".

Shortly after graduating and working briefly at an architecture firm in Madrid, Zaarour returned to Lebanon and engaged in this socially conscious project, among others that were in line with the United Nations' Sustainable Development Goals.

With a focus on women's economic empowerment, Zaarour developed

a seed idea for this platform that helps women sell homemade food, as part of a youth leadership program run by the United Nations Development Programme (UNDP). This earned her invites to pitch her idea at the Regional Forum on Gender Equality in Tunisia, and at the UN Economic and Social Council in New York.

PARTNERING WITH LEBANESE CUSTOMS FOR ACCESS AND EXCELLENCE

We concluded a [strategic partnership](#) with the Lebanese Customs focused on expanding educational access and quality. LAU extends its support by offering tuition grants to customs officers, members, retirees, as well as their spouses and children, ensuring that they have the opportunity to benefit from LAU's extensive array of undergraduate, graduate, and continuing education programs.

Simultaneously, Customs contributes to students' practical knowledge by providing internships, fostering experiential learning in a real-world setting. This collaboration may also encompass Customs' sponsorship of academic conferences, promoting knowledge-sharing and academic excellence. Through this initiative, LAU is increasing educational access but also enriching the quality of education by emphasizing practical experience and collaboration.



EMPOWERING TOMORROW'S LEADERS

The LAU School of Engineering's recent initiative, the TLP VIP+ Industry-Academia Workshop, reflects a strong commitment to quality education. This [collaborative event](#), in partnership with esteemed institutions like the American University of Beirut, Georgia Tech University, and the American University in Cairo, places a significant focus on fostering innovation, professional networking, and job preparedness among students. By bringing together 46 LAU Tomorrow's Leaders (TL) students to pitch their innovative projects, spanning areas from medical, transportation, agriculture, to robotics, artificial intelligence, and virtual reality, the workshop not only enhances students' employability and entrepreneurship skills but also promotes a culture of innovation.

Funded by the U.S. Department of State's Middle East Partnership Initiative (MEPI), the program offers hands-on learning modules, equipping students with practical skills in project management, teamwork, and business, as well as technical skills.



QUDWA: EMPOWERING ARAB WOMEN

Qudwa, meaning 'role model' in Arabic, is a remarkable **non-formal integrated educational program** developed in 1985 to empower illiterate and semi-literate women in the Arab world. Available in both hard copy and digitized formats, this unique program offers comprehensive and self-explanatory learning materials, including illustrations, posters, colored pictures, games, documents, and case studies. It goes a step further by providing evaluation forms to assess its impact on women's lives and achievements. Qudwa aims to enhance the capacities of Arab women, making them active participants in sustainable and equitable development.

The program covers a wide array of critical themes, from human rights, gender equality, and health to livelihoods, civic education, and gender-based violence prevention. Over the years, Qudwa has made a significant impact, benefiting over 60,000 women in Lebanon and training more than 10,000 individuals on its use and implementation. Its reach extends to various regions in Lebanon and the wider Arab world, promoting quality education and empowerment for women.

LEBANESE AND US STUDENTS COLLABORATE ON INNOVATIVE SOLUTIONS: OVERCOMING COMMUNICATION CHALLENGES

In a remarkable **partnership between LAU and Boise State University**, students from two nations have come together to address global challenges and promote quality education. This initiative, funded by the US Embassy in Lebanon, leveraged technology to bridge the gap, overcoming communication challenges through a virtual exchange program. Through collaborative projects, these students learned the art of cross-cultural dialogue, honing skills that no textbook can teach.

The solutions they devised were not only innovative but also deeply impactful, with one project focusing on wildfire prevention and another aiding in the safe return to in-person learning during the COVID-19 pandemic. This program fosters cooperation and understanding among diverse cultures, promoting peace and justice through education and problem-solving. It reflects a vision of a university without borders, where global connections can transform lives and build a brighter future.



LAU AND NYU TISCH: A THEATRICAL COLLABORATION FOR QUALITY EDUCATION

The Lebanese American University and NYU Tisch School of the Arts have collaborated on a theatrical production. **The play, "Amrika"**, written by Dr. Lina Abyad, recounts the lives of Lebanese women immigrants to New York City in the late 19th century. This international collaboration provided LAU performing arts students with a unique opportunity to develop their craft professionally. The students worked on the script and production, gaining invaluable experience and skills.



FOSTERING URBAN INNOVATION: LAU'S VIP+ STARTUP COMPETITION

In 2021, LAU introduced the Vertically Integrated Project (VIP) framework in collaboration with the Georgia Institute of Technology, supported by a grant from the US Department of State Middle East Partnership Initiative (US MEPI). This initiative encourages interdisciplinary collaboration among student teams, guided by faculty, mentored by graduate students and industry partners, fostering a dynamic environment for innovative projects. To enhance the student experience, LAU expanded this framework into the VIP+ model, incorporating entrepreneurship as part of the MEPI Tomorrow Leaders' College to Work Pipeline (TLP).

The inaugural LAU VIP+ Innovation Showcase and Startup Competition on the Byblos campus featured ten teams that had been developing their startups for one to two semesters. The competition, led by former Dean of the School of Engineering and TLP Project Director Lina Karam, aims to ignite innovation, empower students to launch successful startups, and celebrate entrepreneurial endeavors. Beyond cash rewards, the winners received essential support, mentoring, and training, to provide quality education and promote lifelong learning opportunities.

WISSAM MOUKAHAL'S SUPPORT FOR LEBANESE YOUTH

By providing financial assistance and mentorship to LAU students, Moukahal is helping to ensure that all young people in Lebanon have access to quality education, regardless of their socioeconomic background. Moukahal's commitment to education is rooted in his own personal experience. He was able to complete his degree at LAU thanks to financial aid and family assistance, and he knows firsthand the power of education to transform lives.

In addition to providing financial assistance, Moukahal also mentors the students he supports. He provides them with career advice, helps them to network with professionals in their field, and encourages them to give back to their community. His support extends beyond graduation, and he remains in touch with many of his former scholars to help them navigate their careers and achieve their goals.

Moukahal's work is particularly important in light of the current economic crisis in Lebanon. Many families are struggling to afford education, and many young people are considering leaving the country in search of better opportunities.



PUBLIC ENGAGEMENT

45 SYMBOLS: QUALITY EDUCATION THROUGH INCLUSIVE AND ENGAGING LEARNING

The Phaistos Project – Forty-five Symbols was initiated when students with different backgrounds and nationalities, were asked: "What is your truth?", "What is your message, narrative, or statement that you would like to preserve for future generations?" We at LAU answered these questions simultaneously with peers from New York, Cologne, Bogotá and Hong Kong.

Studying a time capsule from the past has the power to spark new ways of thinking. The Phaistos Disc, which was discovered in 1908 and is thought to date to around 1700 BC, is a circular piece of fired clay stamped with forty-five distinct symbols. This code is still unresolved. It inspires the participants of The Phaistos Project to translate current concerns — political, economic, ecological, cultural, or social challenges — into collections of forty-five unique symbols. Design methodologies are used as a mode of inquiry to develop ethnographic visual narratives that are subjective, stimulating, and capture visual traces of the Anthropocene.

The Phaistos Project is an example of an educational initiative that is inclusive and equitable, and that promotes lifelong learning. It promotes sustainable development by helping students to develop a better understanding of the complex challenges facing the Anthropocene. The project also encourages students to think critically and creatively about these challenges, and to develop new solutions.



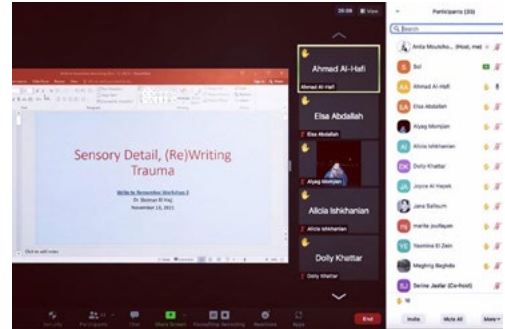
Degrees Conferred AY 2021–2022

Degree	Headcount		
Bachelor's	1,750	BA-Education	33
Master's	306	Teaching Diploma	36
Doctoral – Professional Practice	90	MA-Education	18
Total	2146	Total number of graduates who gained a qualification that entitled them to teach at primary school level	87

“WRITE TO REMEMBER”

The project “[Write to Remember](#)” provided students with the opportunity to learn about the August 4, 2020 explosion in Beirut and its impact on the city and its people through creative writing.

This project was a free and accessible educational opportunity for all students, regardless of their background or socioeconomic status. The project helped students to develop relevant and effective learning outcomes, such as critical thinking skills, creativity, and communication skills. It also helped them to develop the knowledge and skills they need to promote sustainable development by teaching them about the importance of peace, tolerance, and understanding. They also learned to appreciate the cultural diversity of Beirut and its people.



LEARNING ABOUT ENGINEERING, CLIMATE CHANGE AND THE ARCTIC

Professional endurance athlete and United Nations Development Programme (UNDP) Goodwill Ambassador Michael Haddad embarked on an Arctic Walk for Climate Resilience and Food Security in Svalbard, Norway.

As part of his mission, he delivered a “Package of Hope” that contains seed packets from 12 Arab countries, as well as a symbolic seed – a limited edition book by Pope Francis – to the [Svalbard Global Seed Vault](#), where the world’s unique crop collections are stored to safeguard genetic diversity.

In coordination with the UN Food and Agriculture Organization (FAO),

the International Center for Agricultural Research in the Dry Areas (ICARDA) prepared for Haddad the seed packets as part of the official seed stocks from Algeria, Egypt, Iraq, Jordan, Lebanon, Libya, Morocco, Oman, Palestine, Syria, Tunisia, and Yemen, to be deposited in the Svalbard vault.

Haddad, who is paralyzed from the chest down, performed his odds-defying symbolic walk with the aid of a [specially designed exoskeleton](#) devised by a scientific team of engineers and neurologists from LAU and the American University of Beirut.

This project helps students to acquire the knowledge and skills they need to promote sustainable development by teaching them

about the fragility of the Arctic ecosystem, the impact of climate change, and the need for sustainable practices.

The exoskeleton project has inspired several undergraduate engineering capstone projects, a graduate project and thesis, as well as a number of fundraising initiatives and collaborations with experts across the board.



PHARMACY RESIDENCY CONFERENCE: PROMOTING QUALITY EDUCATION AND PHARMACY PRACTICE

[Pharmacy residency programs](#) play a vital role in ensuring quality education for pharmacists. By providing residents with opportunities to participate in research and present their work at conferences, these programs help to advance pharmacy practice and improve patient care.

The conference brings together residents from LAU School of Pharmacy, LAU Medical Center-Rizk Hospital and AUBMC to present their research on a variety of topics related to pharmacy practice. This provides residents with the opportunity to share their knowledge and learn from their peers, while also contributing to the advancement of pharmacy practice.

In addition to providing educational opportunities for residents, the conference also helps to raise awareness of the important role that pharmacists play in the healthcare system. By showcasing the research and innovations of pharmacy residents, the conference demonstrates the value of quality education in pharmacy practice.

LEARNING & STUDENTS

FIELD RESEARCH FOR BETTER EDUCATION

A group of LAU students conducted research on microplastic pollution around the Palm Islands Natural Reserve in Lebanon. The students found microplastics in all of the samples they collected, including water, sediment, and marine organisms.

The students' research highlights the growing problem of microplastic pollution in Lebanon. The field work allowed them to understand the utility of their learnings and understand the impact of these learnings on the environment and human health.

STUDENTS WIN TOP PRIZES AT SDG BRAIN LAB

Two LAU student teams took first and second prizes at the Sustainable Development Goals Brain Lab competition, organized by the UN Global Compact Network Lebanon. The first prize winners proposed a digital solution for cancer patients and their caregivers, while the second prize winners designed an app to help children with attention deficit hyperactivity disorder (ADHD).

DRAMA THERAPY TO BOLSTER SOCIAL SKILLS

In our quest to offer quality education and attend to the mental health of our students since we acknowledge its importance at the same level as the academic course. The Alice Ramez Chagoury School of Nursing at LAU organized a drama therapy workshop for nursing students. Led by renowned actress Zeina Daccache, the workshop provided students with a safe space to express their feelings and bolster their social and team skills.



PLATFORM FOR LGBTQ YOUTH FILLS GAP IN LEBANON

In response to the dearth of reliable information and support available to the LGBTQ community in Lebanon, The Arab Institute for Women (AiW) has launched an online platform called *Shabaket el Meem* to provide support and education to LGBTQ youth in Lebanon. The platform features short animations, a podcast series, a Q&A section, a glossary of LGBTQ terms in English and Arabic, and a map wherein visitors can share their own experiences.

PROJECT IN ARMENIAN SCHOOLS

A new project to promote quality education in Armenian schools in Lebanon has been funded by the Calouste Gulbenkian Foundation. The project focuses on providing teachers professional development while developing new educational resources. It stems from the fact that Western Armenian language teachers and those who teach different subjects in Western Armenian have fewer professional development opportunities as well as minimum access to contextualized pedagogical resources.



Part of the fund will also be used for research and publication. And like Dr Hagop Yacoubian, Associate professor of Education said: "The teachers' journey will be studied over the two-year period of the project, leading to the development and publication of a manual to disseminate resources and lessons acquired from this project". Dr Yaacoubian spearheads the project with the department's Chairperson Dr Rima Bahous.

MENTAL HEALTH SUPPORT SYSTEM: FOR A MORE POSITIVE AND SUPPORTIVE LEARNING ENVIRONMENT FOR ALL

By engaging faculty and staff in the mental health support system, we recognize that the mental health of our faculty and staff is essential to their well-being and productivity, and to the quality of education that they provide to students and the way in which our students should have equal chances in education despite the issues affecting their mental health.

LAU's mental health support system includes a variety of resources and services, such as free and confidential counseling services for faculty and staff, mental health training and workshops for faculty and staff and a supportive work environment that fosters mental well-being. Our aim is to create a more positive and supportive learning environment for all.

QUALITY EDUCATION THROUGH FULL GRADUATE SCHOLARSHIPS

By waiving full tuition, the Graduate Programs Scholarships aim to help students focus entirely on advancing their research skills in preparation for their doctoral studies.

Graduates get to cultivate their research skills in their respective fields and are consistently encouraged by faculty members to publish their term papers. Scholars do more than what is required in their course work, such as further editing and revising research papers and attending research workshops.



FULL GRANTS TO ACCESS TO QUALITY EDUCATION

We offered **full grants in 13 master's programs**. These grants are available to both Lebanese and international students, and they cover the full cost of tuition, fees, and living expenses.

The 13 master's programs that are eligible for full grants are: Business Administration (MBA), Computer Science, Economics, Education, Engineering (all disciplines), Fine Arts, Humanities (all disciplines), International Affairs, Law, Mathematics, Natural Sciences (all disciplines), Nursing and Public Health.

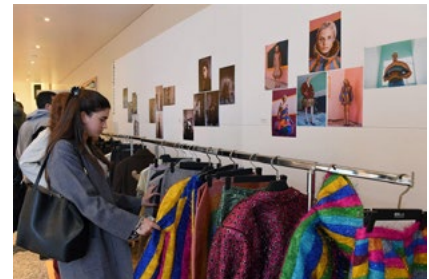
To be eligible for a full grant, students must have a strong academic record with a GPA of at least 3.0. LAU is committed to providing all students with access to quality education, regardless of their financial background.

LAU'S NASAD ACCREDITATION

NASAD is the National Association of Schools of Art and Design, and its accreditation is a mark of distinction for schools in the United States. **LAU's NASAD accreditation** is particularly important for Lebanon, as it is the first art and design school in the country to receive this accreditation. This is a testament to the high quality of education that LAU offers in these disciplines.

LAU's NASAD accreditation helps to achieve SDG 4 by providing Lebanese students with access to high-quality art and design education at an internationally accredited institution.

In addition, LAU's NASAD accreditation helps to promote sustainable development in Lebanon, by providing students with the skills and knowledge they need to succeed in the creative industries.



LAU TOPS DUBAI LYNX AGAIN

LAU students took home from the Dubai Lynx Awards a total of **13 awards at the competition, including three Gold, five Silver, and five Bronze awards**.

LAU's performance at the Dubai Lynx is particularly impressive given the high level of competition. The awards are considered to be among the most prestigious in the Middle East and North Africa region, and they attract entries from some of the best agencies and creative minds in the industry.

LAU's success at the Dubai Lynx Awards is a reflection of the high quality of education that the university offers in communication and design. LAU's programs are designed to prepare students for careers in the creative industries, and they provide them with the skills and knowledge they need to succeed.



RECOGNIZING YOUNG RESEARCHERS FOR PUBLISHED WORK

Our recent recognition of young researchers for their published work is a testament to the university's commitment to quality education.

The LAU Young Researchers Awards recognize students who have published their research in peer-reviewed journals. This is a significant achievement, as it demonstrates that the student's work is of high quality and meets the standards of the international research community.

LAU's recognition of young researchers is important for several reasons. First, it encourages students to pursue research and to develop their critical thinking and problem-solving skills. Second, it helps to raise the profile of LAU research and to attract top students and faculty to the university. Third, it contributes to the advancement of knowledge and to the development of solutions to real-world problems.

LAU's support for young researchers is helping to create a new generation of scholars and scientists who will contribute to the development of Lebanon and the world.

LAU PHARM D STUDENTS BRING HOME SOLID VACCINATION EXPERIENCE

Through their participation in a vaccination campaign, LAU PharmD students gained practical experience in healthcare at Houston Methodist Hospital in Texas, by providing essential services at home amid COVID-19 pandemic. They contributed to quality education by bridging the gap between theory and practice. This **hands-on experience** enriched their academic journey and prepared them to become knowledgeable healthcare professionals.



LAU'S SCHOOL OF ARTS AND SCIENCES RESTRUCTURING: A COMMITMENT TO INTERDISCIPLINARY EDUCATION

The recent **restructuring of LAU's School of Arts and Sciences** seeks to ensure inclusive and equitable quality education for all. This strategic move promotes interdisciplinary education, facilitating a holistic learning experience for students. By enhancing the curriculum with a focus on multidisciplinary programs, LAU is creating an environment that nurtures critical thinking and prepares students for an ever-evolving job market. This reflects a progressive approach to education that caters to the evolving needs of students and the demands of the digital age.



L'ORÉAL BRANDSTORM COMPETITION FOR INNOVATIVE MARKETING AND BUSINESS PLANS

A partnership between the Lebanese American University and L'Oréal includes a number of **initiatives aimed at preparing students for careers in** the beauty industry. These initiatives include L'Oréal Brandstorm Competition where they develop innovative marketing and business plans for L'Oréal brands. This competition provides students with the opportunity to gain real-world experience and learn from industry leaders.



A DECADE OF SELF-EXPRESSION THROUGH CREATIVE WRITING

We celebrated the 10th anniversary of our Creative Writing Competition, which has grown into a university-wide **platform for students to express themselves freely**. The competition, initially limited to ENG 102 and ENG 202 students, has been revamped to include new courses, revamped courses, and new themes. The competition, which focuses on gender, has been influenced by students' experiences with sexism, #metoo, and sexual harassment. The Creative Writing Awards highlighted the importance of translating lived experiences into personal narratives.

MEDIA LITERACY EQUIPPING INDIVIDUALS WITH CRITICAL SKILLS

The Media Digital Literacy Academy of Beirut (MDLAB) focuses on empowering women and youth through media literacy pedagogies and multimedia skills and by promoting inclusive and equitable quality education by fostering creativity and self-expression among students. It brings together experts, students, faculty, and activists for a week-long session aimed at enhancing digital media literacy skills and knowledge. MDLAB's mission includes empowering individuals to use media effectively and amplify voices that have been silenced or misrepresented. It addresses the representation of women, youth, and marginalized groups in media coverage, fostering inclusive narratives.

The academy aims to bring together students and scholars from all over the Arab world and Europe for academic and cultural exchange.

MDLAB has played a significant role in expanding media and digital literacy in the Arab region by offering workshops, training, and curricular materials. It has impacted 60 universities and schools in 12 Arab countries.





ADVOCATING FOR SUSTAINABLE GENDER EQUITY

We hosted the second annual end-of-year conference, titled "[MEPI-TLS Scholars for Sustainable Gender Equality](#)", in collaboration with the Arab Institute for Women (AiW) and the US Middle East Partnership Initiative Tomorrow's Leaders Gender Scholars Program (MEPI-TLS).

The conference featured a keynote address by UN Under Secretary General and Executive Director for UN Women Sima Bahous, panel discussions led by gender experts, as well as oral presentations by TLS scholars who reflected on their experiential and evidence-based learning, and recommended strategies and policies for realizing equality, peace, and development.

In his welcome address, LAU President Michel E. Mawad expressed his pride in the work of the 126 MEPI-TLS scholars who have successfully completed their journey at LAU.

CAMPING AROUND THE SUSTAINABLE DEVELOPMENT GOALS

The [Camping Around the Sustainable Development Goals](#) summer camps, hosted by LAU's School of Arts and Sciences, provided high-school students with a university-level education experience, aligning with LAU's SDG-based Liberal Arts and Sciences Curriculum. The camps focused on essential SDG-related majors, including physics, chemistry, and nutrition. Participants engaged in interactive lectures and hands-on experiments, gaining insights into topics such as physics, nutrition, and soil quality deterioration. Moreover, the camp offered scholarships to students, providing them with the opportunity to continue their education at LAU and supporting their pursuit of knowledge and careers related to the Sustainable Development Goals.



LAU'S YOUTH LEADERSHIP SIMULATION PROGRAMS: EMPOWERING MIDDLE AND HIGH SCHOOL STUDENTS



LAU's Youth Leadership Simulation Programs have been making a significant impact. These student-led initiatives empower middle and high school students by providing them with the essential skills and knowledge needed to succeed academically and professionally. By immersing participants in the culture of international organizations like the United Nations, Arab League, European Union, African Union, and Good Governance, the programs offer hands-on training in research, public speaking, debate, conflict resolution, and more.

Furthermore, LAU allocates scholarships to outstanding students who excel in these simulation programs, opening doors to higher education.



ENHANCING THE EDUCATIONAL EXPERIENCE OF MIDDLE AND HIGH SCHOOL STUDENTS

The LAU Youth Leadership Simulation Programs and the Liberal Arts and Sciences Curriculum are dedicated to enhancing the educational experience of middle and high school students.

In the case of the Youth Leadership Simulation Programs, students are provided with opportunities to develop essential skills such as public speaking, debate, research, problem-solving, and writing. These skills not only contribute to their academic growth but also prepare them for future educational and professional endeavors.

The Liberal Arts and Sciences Curriculum (LASC) takes it a step further by incorporating the United Nations' 17 Sustainable Development Goals (SDGs) into its courses. By doing so, it encourages students to think critically about these global challenges, promoting a more comprehensive understanding of the world's problems and potential solutions.

Both programs empower students to think critically, communicate effectively, and engage with complex global issues, ultimately fostering a commitment to quality education and personal development.

LEARNING EXPERIENCES FOR CREATIVITY AND PROBLEM-SOLVING SKILLS

The World Robot Olympiad (WRO) in Lebanon is a competition where students engage in robotics, aiming to represent Lebanon in the international WRO. This competition fosters creativity and problem-solving skills and highlights the commitment to advancing education and technology in Lebanon. WRO contributes to nurturing future innovators and problem solvers.



GOAL

5

GENDER EQUALITY

5 GENDER
EQUALITY



*Achieve gender equality
and empower all women
and girls*

55

Scholarly
Output

RESEARCH

SUPPORT TO LGBTQI+ PERSONS IN FORCED DISPLACEMENT

A new study with MOSAIC, in partnership with the Gender, Justice and Security Hub at London School of Economics and Political Science, has examined the direct and indirect impacts of conflict and displacement on persons of diverse sexual SOGIESC in Lebanon and other neighboring countries. The study found that LGBTQI+ persons in Lebanon face significant discrimination and violence, both from state authorities and from members of the public. This discrimination is exacerbated by the COVID-19 pandemic, the economic crisis, and the aftermath of the Beirut port explosion.

Despite progress in gender responsive resettlement, the [study](#) found that discrimination against LGBTQI+ persons remains endemic in Lebanon and that many international efforts by UN agencies and international humanitarian organizations still lack adequate and targeted consultations with LGBTQI+ persons of concern.

FEMALE REPORTERS DISPROPORTIONATELY TARGETED WITH VIOLENCE

A new study by LAU's AIW (Arab Institute for Women) and UN Women has found that female reporters covering Lebanon's 2019 protest movement were disproportionately targeted with physical and online violence than their male counterparts.

[The study](#), which surveyed over 200 female journalists, found that 80% of respondents had experienced some form of violence or harassment in the course of their work. This is significantly higher than the global average of 63%, according to the International Federation of Journalists.

The country has a long history of gender inequality and violence against women, and female journalists are often seen as a threat to the status quo.

OPERATIONS

HARASSMENT POLICY: CREATING A SAFE AND INCLUSIVE ENVIRONMENT FOR ALL

The Harassment Policy prohibits all forms of harassment, including sexual harassment, gender-based harassment, and other forms of discriminatory harassment. The policy is aligned with SDG 5 (Achieve gender equality and empower all women and girls) and Times Higher Education impact ranking, and it is designed to create a safe and inclusive environment for all students, faculty, and staff.

The policy provides clear procedures for reporting and investigating harassment complaints, and it takes disciplinary action against individuals who violate the policy. LAU is committed to preventing harassment and creating a culture of respect and dignity for all members of its community.



GENDER EQUALITY PLAN: A MODEL FOR THE ARAB WORLD AND BEYOND

We launched a Gender Equality Plan to assess and refine the existing policies and procedures to foster gender equality across the university community. The assessment aims to identify and implement innovative strategies to correct any bias; and set clear targets and monitor progress via indicators. It aims to answer these questions: How are we supporting gender equality at LAU? What are our specific goals about gender equality? What are the steps we need to take to meet those goals? And lastly, how will we be accountable for meeting our goals?

We started from an expansive definition of gender equality, not only in terms of equality between women and men, but all genders as well as related identities such as sexual orientation. We define gender equality as when people of all genders have equal rights, responsibilities and opportunities.

The Gender Equality Plan is expected to have a significant impact on LAU, both internally and externally. Internally, it aims to create a more inclusive and equitable environment for students, faculty, and staff. Externally, it works towards positioning LAU as a leader in gender equality in the Arab world and beyond.

Admissions by Gender – Fall 2021

Level	Received Applications		Accepted Applications		Enrolled Applicants		Acceptance Rate		Yield rate	
	Female	Male	Female	Male	Female	Male	Female	Male	Female	Male
Undergraduate	3,331	2,851	2,302	2,012	1,148	990	69.1%	70.6%	49.9%	49.2%
Graduate	477	300	241	155	135	87	50.5%	51.7%	56.0%	56.1%
Doctoral – Professional Practice	199	127	93	56	61	32	46.7%	44.1%	65.6%	57.1%
Total	4,007	3,278	2,636	2,223	1,344	1,109	65.8%	67.8%	51.0%	49.9%

Enrollments by Gender – Fall 2021

School	Female	Male
School of Architecture & Design	448	112
School of Arts & Sciences	1,888	1,104
Adnan Kassar School of Business	863	1,285
School of Engineering	320	1,027
Gilbert & Rose-Marie Chagoury School of Medicine	123	121
Alice Ramez Chagoury School of Nursing	153	51
School of Pharmacy	380	87
Undecided	21	29
Total	4,196	3,816



PUBLIC ENGAGEMENT

ADVOCATING FOR SUSTAINABLE GENDER EQUITY

Tomorrow's Leaders Gender Scholars Program is a unique program that educates and empowers students to work for gender equality, conducts research on gender issues, and advocates for policies and practices that promote gender equality. This program contributes to achieve gender equality and empower all women and girls in multiple ways, including:

Providing scholarships and support to students who are passionate about gender equality and women's empowerment, offering academic coursework, research, and community engagement opportunities on gender issues, partnering with organizations such as the Arab Institute for Women (AiW) to mainstream gender in all courses at LAU and to provide students with access to seminars, conferences, webinars, and internships, publishing student research in a special edition of the journal "Al Raida" to disseminate knowledge on gender issues and to promote gender equality.

EMPOWERING ARAB WOMEN THROUGH EDUCATION

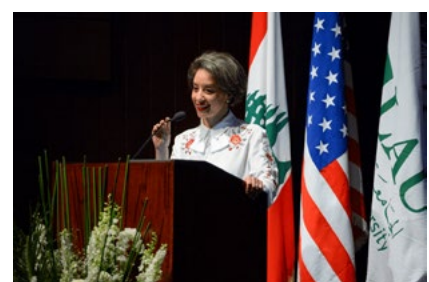
Qudwa, a non-formal integrated educational kit, is designed to empower Arab women and improve their quality of life. It covers diverse topics like human rights, gender equality, health, hygiene, nutrition, sexual and reproductive health, child development, civic education, community building, livelihoods, socio-economic empowerment, chronic diseases, gender-based laws, people with special needs, gender-based violence prevention, response, and supporting vulnerable groups. It also includes a training guide for implementation and DVDs/CDs with stories, documentaries, and program material. More than 60,000 women in Lebanon have benefited from Qudwa, and it has been adopted by the Ministry of Social Affairs and expanded to other Arab countries.

HONORING WOMEN LEADERS OF CHANGE

The United Nations System in Lebanon, coordinated by UN Women, funded by the United Kingdom Government and in collaboration with the Arab Institute for Women at the Lebanese American University, launched a campaign on International Women's Day to celebrate and recognize the contributions of Lebanese women leaders in responding to the COVID-19 pandemic and Lebanon's compounded crises.

PARTNERSHIPS OF THE ARAB INSTITUTE FOR WOMEN (AIW)

The Arab Institute for Women partnered with the 3rd Athena40-Global conversation on "Female Leadership in times of crises" and hosts a panel in Beirut. Athena 40 is a platform that was launched by the London-based,



non-profit, Global Thinkers forum which was launched in March 2019 in order to connect women from around the world to create impactful conversations and women-focused opportunities. It aims to impact policy-making by joining forces to contribute towards gender equality and women's advancement.

Another partnership was with the Economic and Social Commission for Western Asia (ESCWA) according to which a workshop was held on the **Women, Peace, and Security (WPS) Index**, a tool to measure the performance of countries in implementing the WPS agenda. The workshop highlighted the importance of the WPS Index for the MENA region, and the need for country-specific analysis to identify the specific challenges and opportunities for implementing the WPS agenda in each country.

SHABAKET EL MEEM: LGBTQ YOUTH SUPPORT PLATFORM FILLS GAP IN LEBANON

With funding from the Embassy of the Netherlands in Lebanon, The Arab Institute for Women (AiW) has launched a new **online platform** called *Shabaket el Meem* to provide support and information to LGBTQ youth in Lebanon. The platform features short animations, a podcast series, a Q&A section, a glossary of LGBTQ terms in English and Arabic, and a map where visitors can share their own experiences.

It was created in response to the dearth of reliable information and support available to the LGBTQ community in Lebanon. The platform aims to promote a strong civil society network of organizations and actors that can fill this gap. The platform is also an important tool for raising awareness and understanding of LGBTQ issues in Lebanon.

PANEL DISCUSSION: WOMEN'S PARTICIPATION IN DECISION-MAKING IS ESSENTIAL FOR SUSTAINABLE DEVELOPMENT IN THE ARAB WORLD

Prompted by the recent appointment in Tunisia of the first female prime minister in the Arab world, the US-Middle East Partnership Initiative Tomorrow's Leaders program (MEPI TL) at LAU hosted a **panel discussion** on Women's Participation in Decision-Making in the Arab World, held in collaboration with the Embassy of Tunisia in Lebanon. Women's participation in decision-making is essential for sustainable development in the Arab world. However, women are underrepresented in decision-making positions at all levels of government and business in the Arab world. This underrepresentation has a number of negative consequences, including less effective public policy and less inclusive economic growth.

LEARNING & STUDENTS

A DECADE OF LAU SELF-EXPRESSION THROUGH CREATIVE WRITING

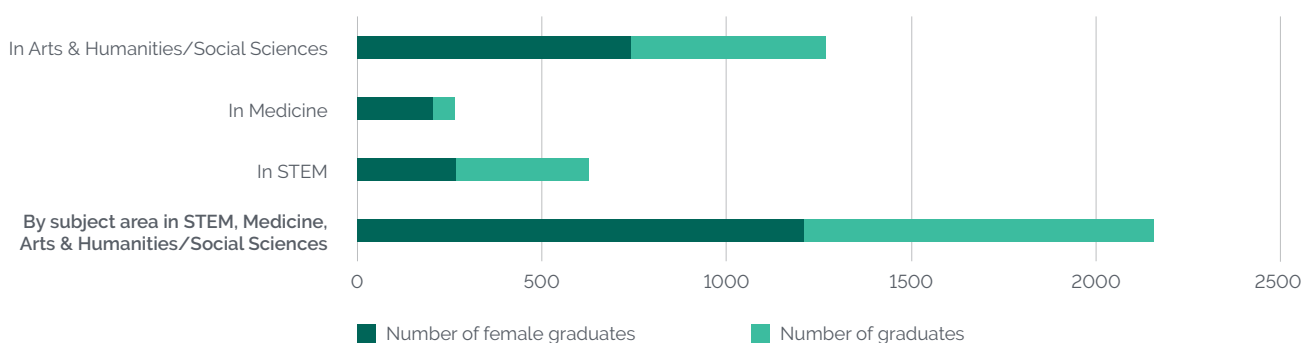
The Creative Writing Competition (**CWC**) launched in 2022 by the Department of English, currently subsumed by the Department of Communication, Arts and Languages in the School of Arts and Sciences, has provided a platform for all LAU students to express themselves freely. The program provides a safe and supportive space for students to express themselves creatively through writing.

The theme of the 2022 competition, Gender, derives from the ideas and topics that have been previously explored by students over the years. Some examples include sexism, #metoo, sexual harassment, sexual minority rights, youth and gender activism, bullying, and coming of age.

MEPI-TLSER'S RESEARCH ON GENDER AND REFORM RECEIVES RECOGNITION

Electrical engineering student and Middle East Partnership Initiative (US MEPI) Gender Scholar Pia Kattoura was invited to share her **research** and contribute to current work in anti-corruption reform after impressing US MEPI leaders with her presentation on a gender-inclusive public sector in Lebanon and the region at the end-of-year conference.

Proportion of Women Receiving Degrees



GOAL

6

CLEAN WATER AND SANITATION

6 CLEAN WATER AND SANITATION



Ensure availability and sustainable management of water and sanitation for all

27

Scholarly Output



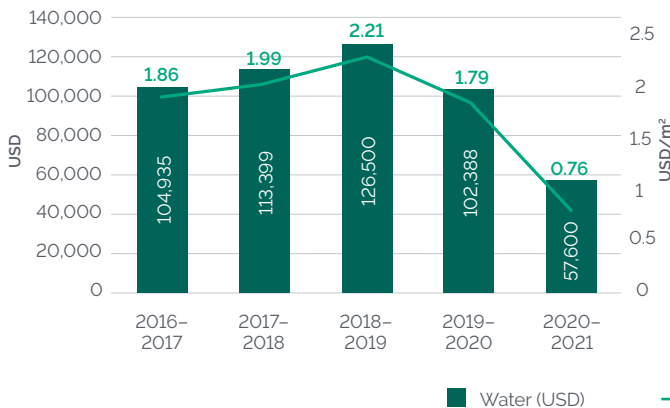
OPERATIONS

INITIATIVES TO PROMOTE CLEAN WATER AND SANITATION

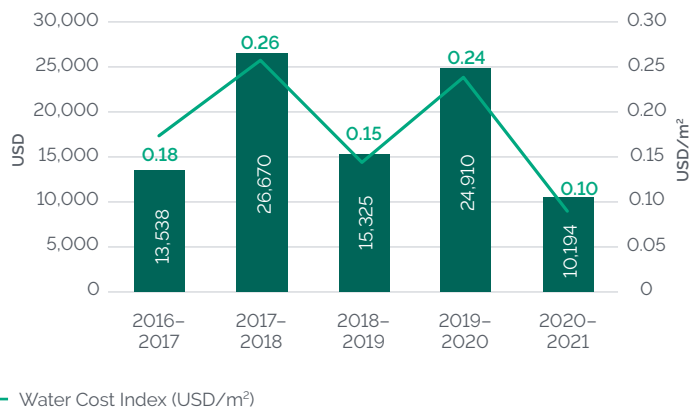
We are committed to promoting clean water and sanitation through our sustainable campus initiatives. These initiatives call for ensuring availability and sustainable management of water and sanitation for all. To accomplish that, we implemented a variety of sustainable campus initiatives related to water and sanitation including: reducing water consumption through water-saving devices and practices, harvesting rainwater for irrigation, recycling water for irrigation, treating wastewater for reuse, installing low-flow sanitary fixtures.



Beirut Campus - Water Cost 2017-2021



Byblos Campus - Water Cost 2017-2021



LEARNING & STUDENTS

CAMPING AROUND THE SUSTAINABLE DEVELOPMENT GOALS

LAU students are engaging in an **innovative camping experience** designed to foster awareness of sustainable development goals (SDGs). 79 high-school students congregated to participate in the School of Arts and Sciences Summer Camps, which were spread out across three individual camps focusing on essential SDG-focused majors: physics, chemistry and nutrition.

This camping initiative brings together students from diverse backgrounds to explore the challenges and solutions related to water resources.

Through hands-on activities and discussions, participants gain a deeper understanding of the importance of clean water and sanitation and learn how they can contribute to achieving SDG 6. This immersive program reflects LAU's commitment to promoting sustainable practices and educating future leaders about the critical global issues outlined in the SDGs.

Following the immersive summer camps of 2022, the Liberal Arts and Sciences Department designed lectures and activities over five days of learning, from July 3 to July 7.



IMPLEMENTATION OF FIRST PHASE OF SUSTAINABLE WASTE MANAGEMENT OF THE LITANI BASIN

The **Sustainable Waste Management** of the Litani Basin is making significant strides in addressing environmental and health hazards caused by pollution in the Litani River Basin. By implementing anaerobic digestion technology to treat industrial wastewater, the program not only offers a sustainable solution but also produces methane gas, a cleaner fossil fuel that can serve as an alternative energy source. By improving water quality and ensuring clean water access for communities in the Beqaa valley and Beirut, thus reducing the risk of waterborne diseases.



GOAL

7

AFFORDABLE AND CLEAN ENERGY

7 AFFORDABLE AND CLEAN ENERGY



Ensure access to affordable, reliable, sustainable and modern energy for all

124

Scholarly Output



RESEARCH

A PROJECT TO ESTABLISH A SOLAR ENERGY INDUSTRY SECTOR IN THE COUNTRY

Harnessing solar energy in Lebanon with the support of USAID is a significant stride towards Affordable and Clean Energy. This initiative focuses on increasing the share of renewable energy sources in the energy mix. By adopting solar power, Lebanon aims to provide its citizens with affordable, reliable, and modern energy services, which is fundamental to achieving universal access to electricity.

The shift to clean and sustainable energy sources also plays a crucial role in reducing greenhouse gas emissions. We aim to promote the use of clean and sustainable energy, bringing Lebanon closer to fulfilling its energy-related targets and contributing to a greener, more sustainable future.



OPERATIONS

COMPREHENSIVE SUSTAINABILITY INITIATIVES

We implemented a comprehensive range of sustainability initiatives, from energy saving and water conservation to sustainable living, sustainable design and construction, environmental protection, recycling and waste management.

LAU has implemented a number of **energy and water conservation measures** on its campuses, including: Installing energy-efficient lighting and appliances, turning off lights and appliances when not in use, reducing heating and cooling costs, installing water-efficient fixtures, collecting rainwater for irrigation, recycling water for irrigation and treating wastewater for reuse.

We also promote sustainable living among our students and staff through a variety of initiatives, including: Awareness campaigns concerning the importance of sustainability, education programs on sustainable practices, green living

tips on the LAU website and social media, sustainable living events and workshops.

Our new and renovated buildings are designed to be sustainable and **energy-efficient**. The university's LEED Gold-certified Joseph Jabbara Library and Riyadh Nassar Central Administration building features a number of sustainable design features, such as a solar water heating system, a rainwater harvesting system, and energy-efficient lighting and appliances.

We commit as well to protecting the environment through a variety of initiatives, including: Reducing its carbon footprint, protecting and restoring water-related

ecosystems, reducing air pollution and minimizing waste production.

Our comprehensive recycling and **waste management program** is present on all our campuses. We do recycle a variety of materials, including paper, plastic, metal, and glass. We also compost organic waste and donate reusable items to charity.



HURRAH! THIS WEB PAGE IS CLEANER THAN 65% OF WEB PAGES TESTED

Our [websitecarbon.com/website/lau-edu-lb/](https://www.websitecarbon.com/website/lau-edu-lb/) sets a commendable example of environmental responsibility. By highlighting its eco-friendly attributes, such as running on sustainable energy, it promotes the use of clean and renewable power sources. This aligns with the SDG 7 target of ensuring access to affordable, reliable, sustainable, and modern energy for all. The website's efforts to reduce its carbon footprint and encourage energy efficiency contribute to a more sustainable and environmentally conscious online presence, underscoring the importance of clean energy and responsible energy consumption in our digital age.

FOSTERING SUSTAINABLE ENERGY SOLUTIONS: LAU'S VIP+ STARTUP COMPETITION

We took a significant step towards fostering innovative solutions in sustainable energy through **its VIP+ Innovation Showcase and Startup Competition** in 2021. The competition, funded by the US Department of State Middle East Partnership Initiative (US MEPI), embraced the Vertically Integrated Project (VIP) framework designed by Georgia Institute of Technology. This framework allows student teams to collaborate on groundbreaking projects across disciplines, incorporating an entrepreneurship component to amplify their impact and align with the MEPI Tomorrow Leaders' College to Work Pipeline (TLP).

Ten teams presented their startups at the first LAU VIP+ Innovation Showcase and Startup Competition, demonstrating a commitment to innovation and entrepreneurship. Among the winners were Cedar BioDiagnostics and Takatcom, startups that aim to tackle issues related to kidney health and decentralized energy solutions, respectively.



EMBRACING CLEAN ENERGY PRACTICES AND EFFICIENCY MEASURES

LAU's focus on tracking and reducing carbon emissions. Actively working to minimize its carbon footprint and **reduce energy consumption across its campuses in Beirut and Byblos**, LAU contributes to the global goal of ensuring access to affordable, reliable, sustainable, and modern energy for all. Embracing clean energy practices and efficiency measures, the university not only demonstrates its commitment to environmental sustainability but also plays a crucial role in promoting cleaner and more sustainable energy sources, thereby contributing to a greener, more energy-efficient future.

PUBLIC ENGAGEMENT

FOR A CLEANER AND MORE SUSTAINABLE ENERGY SOURCE

LAU's **Sustainable Waste Management of the Litani Basin** program is actively addressing environmental and health issues stemming from pollution in the Litani River Basin. The implementation of anaerobic digestion technology not only offers a sustainable solution but also generates methane gas, a cleaner fossil fuel, thus contributing to Affordable and Clean Energy. By providing an alternative energy source, the program promotes access to reliable and sustainable energy, which is a key component of SDG 7. This initiative showcases LAU's commitment to tackling complex environmental challenges while simultaneously supporting clean energy solutions, aligning with the United Nations' Sustainable Development Goals.

GOAL

8

DECENT WORK AND ECONOMIC GROWTH

8 DECENT WORK AND
ECONOMIC GROWTH



*Promote sustained,
inclusive and sustainable
economic growth,
full and productive
employment and decent
work for all*

74

Scholarly
Output



RESEARCH

DRIVERS OF YOUTH IRREGULAR MIGRATION: EVIDENCE FROM THE MENA REGION

Faculty members of the Department of Economics at the Adnan Kassar School of Business examine the [push and pull factors in irregular migration pre- and post-Arab Spring](#). This study aims to promote sustained, inclusive, and sustainable economic growth, full and productive employment, and decent work for all. It does so by identifying drivers of youth irregular migration related to unemployment, job instability, and economic constraints. It also sheds light on the impact of economic opportunities and wealth disparities on migration decisions.

By recognizing the role of governance and institutional factors in migration decisions, the research indirectly supports the promotion of safe and secure working environments for all workers, including migrant while emphasizing the importance of policies that provide employment and economic opportunities to youth.



OPERATIONS

GRADUATE PROGRAM SCHOLARSHIPS FOR ECONOMIC GROWTH

LAU offers a variety of scholarships to its graduate students, including merit-based scholarships, need-based scholarships, and scholarships for specific programs or fields of study. The **Graduate Program Scholarships** are one of the most prestigious scholarships offered by LAU, and they are awarded to students who have demonstrated academic excellence and leadership potential.

Our Graduate Program Scholarships are available to students who are pursuing a master's degree at LAU in Applied Economics, Civil & Environmental Engineering, Computer Engineering, Computer Science, Human Resources Management, Interdisciplinary Gender Studies, International Affairs, Islamic Art and Mechanical Engineering.

Faculty – Fall 2021

School	Full-Time	% Female	Part-Time*	% Female
School of Architecture & Design	21	33.3%	72	54.2%
School of Arts & Sciences	127	57.5%	227	66.5%
Adnan Kassar School of Business	59	33.9%	60	41.7%
School of Engineering	45	22.2%	46	34.8%
Gilbert & Rose-Marie Chagoury School of Medicine	17	70.6%	-	-
Alice Ramez Chagoury School of Nursing	9	66.7%	11	81.8%
School of Pharmacy	19	52.6%	22	77.3%
Total	297	46.5%	434	58.5%
Physicians	250	44.8%	159	28.3%

* Duplicate headcounts in part-time faculty counts between schools occur as faculty may teach in two different schools, yet the total is unduplicated.

THROUGH EQUALITY FOR EVERYONE PROJECT: AIW PROMOTES DECENT WORK AND ECONOMIC GROWTH

The project of the Arab Women Institute (AiW): **Equality for Everyone: Gender Reform from Grassroots to Government** aims at promoting universal parental leave and progressive childcare policies among Lebanese working parents as an entry point to achieving greater gender equality in Lebanon. This innovative project targets parental leave policies within the private and public sectors, with a focus on policy change on the national level. The project also targets LAU as a pilot project for policy change regarding parental leave policies.

AiW's Equality for Everyone project is making a real difference in the lives of women and girls in the Arab region.

2,287
Students enrolled in internship courses

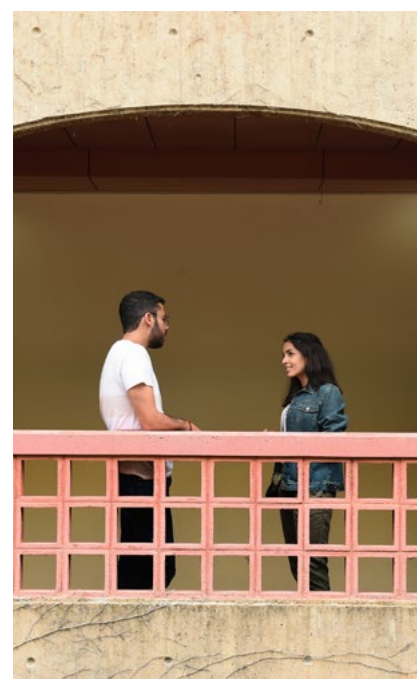
Accessing this program ensures economic growth for students and the society they will eventually work in.

DECENT WORK AND ECONOMIC GROWTH THROUGH GRADUATE PROGRAM SCHOLARSHIPS

Our **graduate programs** are designed to prepare students for high-demand careers in a variety of fields, including business, engineering, science, health, and education. By providing scholarships to students, we aim to help them access the education they need to succeed in their careers and contribute to the Lebanese economy.

The scholarships cover the full cost of tuition, fees, and living expenses. This allows students to focus on their studies and graduate free of debt.

LAU's graduate programs scholarship program is making a real difference in the lives of students and the Lebanese economy. LAU graduates are highly sought-after by employers and play a vital role in the development of Lebanon.



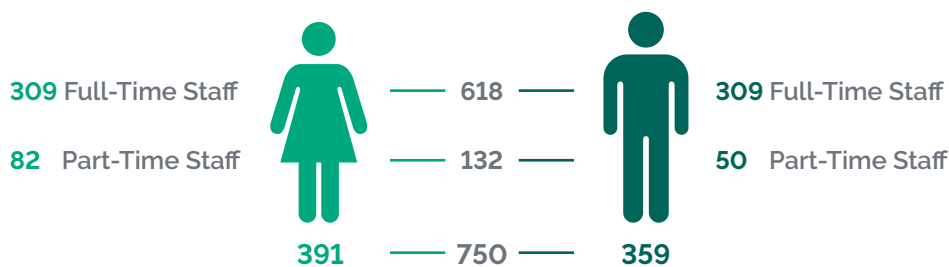
EMPOWERING ARAB WOMEN FOR ECONOMIC GROWTH AND SOCIAL DEVELOPMENT

The *Qudwa* Basic Living Skills Program, was developed in 1985. This non-formal educational kit is a vital resource aimed at illiterate and semi-literate women in the Arab world. It's available in both hard copy and digitized forms, facilitating access for a broad audience. *Qudwa* is particularly unique due to its simplicity, innovation, and comprehensive approach, making learning self-explanatory and integrated.

The program provides essential tools, including illustrations, posters, colorful pictures, games, documents, and case studies. It goes a step further by offering evaluation forms to measure the program's impact on women's lives and achievements.

Qudwa's objectives align with SDG 8 by seeking to enhance the capacities of Arab women and empower them to become active participants in sustainable and equitable development. Its content is continuously updated, covering essential themes such as human rights, gender equality, health, and socio-economic empowerment. Over the years, *Qudwa* has transformed the lives of more than 60,000 women in Lebanon and has trained over 10,000 individuals. The program has garnered continuous support from non-governmental organizations and has been adopted by the Ministry of Social Affairs in Lebanon, expanding its reach to other Arab regions, contributing to both economic growth and social development.

STAFF – Fall 2021



FOSTERING ECONOMIC GROWTH THROUGH ENTREPRENEURSHIP

We held our VIP+ Innovation Showcase and Startup Competition. This event was designed to encourage innovation, entrepreneurship, and the creation of startups. The competition saw five teams rewarded with monetary prizes and support to advance their innovative projects. The winning startups included Cedar BioDiagnostics, which specialize in developing microchips for detecting slight variations in kidney function, and Takatcom, which is designing an energy trading platform for trading excess solar energy at affordable costs.



WISSAM MOUKAHAL'S DEDICATION TO EMPOWERING LEBANESE YOUTH

The unwavering commitment to education stems from his own personal journey, having completed his LAU degree with the aid of financial support and family assistance, a transformative experience that instilled in Wissam Moukahal a deep belief in education's life-changing potential. He firmly upholds the principle that everyone deserves a quality education and is resolute in his mission to empower Lebanese youth to reach their full potential.

Beyond financial assistance, Moukahal serves as a mentor to the students he supports, providing invaluable career guidance, facilitating professional networking opportunities, and fostering a spirit of community engagement. His dedication extends far beyond graduation, as he maintains ongoing connections with many of his former mentees, offering continued support in navigating their careers and realizing their aspirations.

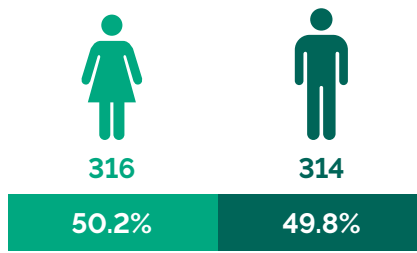
In the context of Lebanon's current economic crisis, Moukahal's efforts are especially vital. The nation grapples with the challenges of affordability in education, while many young individuals contemplate emigration in pursuit of better prospects. Moukahal's work offers a glimmer of hope, providing essential support to the youth and contributing to a brighter future in this trying period.

OUR HARASSMENT POLICY

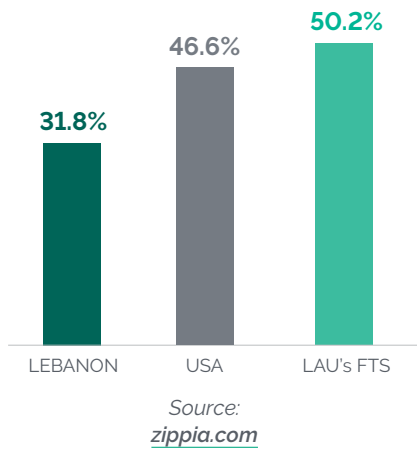
The LAU Harassment Policy document promotes a safe and inclusive environment that is conducive to fostering decent work and fair employment practices. SDG 8 emphasizes the importance of eradicating all forms of discrimination, including harassment, in the workplace. The policy's commitment to preventing and addressing harassment underscores LAU's dedication to creating a respectful and equitable workplace, essential for achieving not only SDG 8 but also the broader Sustainable Development Goals, which rely on promoting inclusive and sustainable economic growth.

Percentage of Women in the Workplace

- LAU's FTS Overall Gender Diversity Data

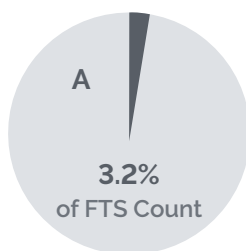
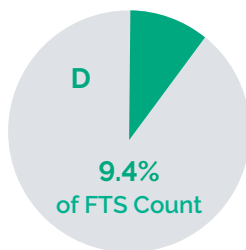
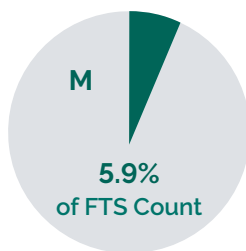


- Benchmarking against Lebanon & USA



Percentage of Women Leadership Positions

- LAU's FTS Percentage of Women in Leadership Positions



PUBLIC ENGAGEMENT

ECONOMIC REFORM AFTER BEIRUT'S BLAST

Following the largest non-nuclear blast in history on August 4, 2020 in Beirut, we hosted a **webinar** to discuss the role of international funds and economic reform in Lebanon's recovery.

The panelists discussed the challenges facing Lebanon's economy, including a large budget deficit, high public debt, and a weak banking sector. They also discussed the potential benefits of international aid and the need for economic reforms.

The panelists agreed that international aid and economic reforms are essential for Lebanon's long-term recovery. However, they also recognized that reforms will be difficult to implement.

DRIVING SUSTAINABLE ECONOMIC GROWTH WITH FULL GRANTS IN 13 MASTER'S PROGRAMS

We offered full grants in **13 master's programs** available to both Lebanese and international students, and they cover the full cost of tuition, fees, and living expenses.

LAU's full grants make it possible for students from all backgrounds to pursue a master's degree, regardless of their financial situation. These grants also promote sustained, inclusive, and sustainable economic growth, full and productive employment, and decent work for all. These grants help students to develop the skills and knowledge they need to succeed in the workforce and contribute to the economic growth of their communities.

THE LEBANESE GOVERNMENT'S FINANCIAL RECOVERY PLAN EXPLAINED

We discussed during a timely interactive session at LAU [The Lebanese Government's Financial Recovery Plan](#). The plan's overarching goal is to resolve Lebanon's deep-seated financial crisis rather than simply manage it. By addressing the critical issues of macroeconomic stability, corruption, and fiscal sustainability, the government aims to reinvigorate economic growth and create a conducive environment for job creation. A crucial element is ensuring that economic recovery benefits all sectors of society promoting sustained, inclusive, and sustainable economic growth, full and productive employment, and decent work for all, particularly in a post-crisis context where these goals are of paramount importance.

RE-DESIGN OF BEIRUT PORT, AND ITS RELATION TO THE CITY

[The revitalization and development of the port](#) and its vicinity have the potential to create job opportunities and stimulate economic growth in the region. This project fosters sustainable economic activities, promoting decent work conditions, and investing in infrastructure.



LEARNING & STUDENTS

PROVIDES STUDENTS WITH A COMPETITIVE EDGE IN THE CREATIVE INDUSTRY

Lebanese American University (LAU) has once again displayed its dominance in the realm of creative excellence at the 2021 Dubai Lynx, emphasizing its alignment with SDG 8: Decent Work and Economic Growth. This prestigious event, known as the "benchmark for creative excellence in the MENA region," attracts top professionals in media, advertising, marketing, and communication.

LAU's Graphic Design students, under the mentorship of Adjunct Faculty Joumana Ibrahim, achieved remarkable success in the competition. This accomplishment not only reflects their creative talents but also highlights their resilience in the face of multiple challenges, including the aftermath of the August 4 explosion, the ongoing pandemic, and the Lebanese economic crisis. The winning designs, inspired by daily activities and social media platforms, offer a unique perspective on customized content and user engagement. LAU's continued success in competitions like Dubai Lynx enhances its reputation and provides students with a competitive edge in the creative industry, promoting economic growth and opportunities in the region.

NURTURING A CULTURE OF RESEARCH AND EXCELLENCE

The LAU's university's Office of Graduate Studies and Research (GSR) recently hosted its inaugural Student Research Awards ceremony, honoring both undergraduate and graduate students who have made significant contributions to research during their academic journey. By acknowledging outstanding research in diverse fields, LAU encourages students to pursue higher levels of education and enhances the culture of research and innovation. These awards encompass various categories, reflecting LAU's commitment to promoting research and academic growth. The recognition not only supports students' academic and professional development but also aligns with SDG 8 by contributing to economic growth through knowledge and skill development. It reinforces LAU's mission to foster a nurturing environment where research and innovation thrive, thus promoting economic prosperity and opportunities for all.



RESTRUCTURE AT SCHOOL OF ARTS AND SCIENCES PREPARES STUDENTS FOR THE JOBS OF THE FUTURE

LAU's School of Arts and Sciences (SAS) recently announced a restructure to accommodate interdisciplinary education.

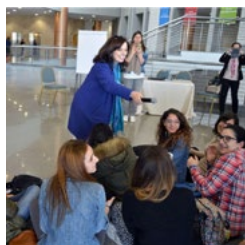
The SAS restructure will create new interdisciplinary programs that prepare students for the jobs of the future. These jobs will require a combination of skills and knowledge from different disciplines. For example, a student interested in a career in artificial intelligence could major in computer science

and mathematics, but also take courses in philosophy and ethics to understand the social and ethical implications of this technology.

The SAS restructure is also designed to promote entrepreneurship and innovation. The new interdisciplinary programs will provide students with the skills and knowledge they need to start their own businesses or develop new products and services. This is important for creating new jobs and boosting economic growth.

TOMORROW'S LEADERS GENDER SCHOLARS CONFERENCE PUSH FOR POSITIVE, TRANSFORMATIVE CHANGE

In collaboration with the Arab Institute for Women (AiW), the US Middle East Partnership Initiative Tomorrow's Leaders Gender Scholars Program (MEPI-TLS) at LAU hosted its second annual end-of-year conference, titled MEPI-TLS Scholars for Sustainable Gender Equality. LAU's conference emphasized the focus of LAU on achieving gender equality and creating equitable opportunities in the workforce and the significance of promoting women's active participation in the job market, addressing gender disparities, and enhancing women's economic empowerment.



Gender Pay Gap

- Adjusted Gender Pay Gap

Women (Full Time Staff)			Men (Full Time Staff)			Unadjusted Pay Gap
% of Total	Average Age	Average Pay Unit	% of Total	Average Age	Average Pay Unit	
50.2%	46	LBP 25,082	49.8%	47.9	LBP 25,194	0.45%

CAMPING AROUND THE SUSTAINABLE DEVELOPMENT GOALS: FOR FUTURE ECONOMIC OPPORTUNITIES

The School of Arts and Sciences Summer Camps at LAU provide high-school students with an opportunity to experience university-level education in subjects like physics, chemistry, and nutrition. Notably, these camps offer a chance for participants to earn scholarships, contributing to their future educational opportunities. This initiative aligns with SDG 8 (Decent Work and Economic Growth), as it supports access to quality education and helps in preparing students for future economic opportunities through higher education.

LAU'S YOUTH LEADERSHIP SIMULATION PROGRAMS: PROMOTING YOUTH LEADERSHIP

LAU's Youth Leadership Simulation Programs empower middle and high school students with leadership, research, debate, and public speaking skills, and essential tools for their academic and professional success. The programs are entirely student-led and organized, giving students practical experience in management and leadership roles.

Additionally, LAU offers scholarships to outstanding participants, providing an opportunity for further education and skill development. By preparing students for meaningful roles in international organizations and promoting youth leadership, these programs align with SDG 8's targets, contributing to the goal of fostering economic growth and decent employment opportunities for all.

CREATING DECENT WORK OPPORTUNITIES AND FOSTERING ECONOMIC GROWTH

The LAU Youth Leadership Simulation Programs and the Liberal Arts and Sciences Curriculum are committed to equipping students with skills that are not only relevant to their academic journeys but also essential for their future careers.

Through the Youth Leadership Simulation Programs, students engage in activities that enhance their leadership, research, debate, public speaking, problem-solving, and writing skills. These are fundamental skills that make them more competitive in the job market and better prepared to succeed in their professional lives. Additionally, LAU offers scholarships to outstanding participants, providing financial support to students and promoting access to quality education.

The Liberal Arts and Sciences Curriculum (LASC) takes a broader approach by incorporating the United Nations' 17 Sustainable Development Goals (SDGs) into its courses. This curriculum encourages students to think critically about global issues, promoting a deeper understanding of the challenges facing the world. By cultivating these critical thinking and problem-solving skills, the LASC contributes to creating a future workforce that is more adaptable, innovative, and equipped to drive economic growth.

Both the Youth Leadership Simulation Programs and the LASC empower students with the skills and knowledge necessary to enter the workforce and contribute positively to economic growth. These programs not only benefit individual students but also play a role in advancing the broader agenda of creating decent work opportunities and fostering economic growth worldwide.



GOAL

9

INDUSTRY, INNOVATION AND INFRA- STRUCTURE

9 INDUSTRY, INNOVATION
AND INFRASTRUCTURE



*Build resilient
infrastructure,
promote inclusive
and sustainable
industrialization,
and foster innovation*

99

Scholarly
Output

OPERATIONS

45 SYMBOLS: INNOVATION IN LEARNING

Studying a time capsule from the past has the power to spark new ways of thinking. The Phaistos Disc, which was discovered in 1908 and is thought to date to around 1700 BC, is a circular piece of fired clay stamped with forty-five distinct symbols. This code is still unresolved. It inspires the participants of [*The Phaistos Project — Forty-five Symbols*](#) to translate current concerns — political, economic, ecological, cultural, or social challenges — into collections of forty-five unique symbols. Design methodologies are used as a mode of inquiry to develop ethnographic visual narratives that are subjective, stimulating, and capture visual traces of the Anthropocene.

At LAU, we answered the following questions simultaneously with other four cities across the globe: New York, Cologne, Bogotá and Hong Kong. It was the initiation of the Phaistos Project when students with different backgrounds and nationalities, were asked: "What is your truth?", "What is your message, narrative, or statement that you would like to preserve for future generations?"

VIRTUAL EXCHANGE PROGRAM BETWEEN LAU AND BOISE STATE UNIVERSITY

[The virtual exchange program between Lebanese American University \(LAU\) and Boise State University \(BSU\)](#) is a program funded by the US Embassy in Lebanon. It aims to foster cross-cultural dialogue and innovative solutions among Lebanese and US students. Through Flipgrid, an educational video app, 71 students worked on three projects that engendered cross-cultural dialog. The virtual exchange program is aligned

with Sustainable Development Goal 16 which aims to promote peaceful and inclusive societies for sustainable development, provide access to justice for all and build effective, accountable and inclusive institutions at all levels. By investing in cross-cultural partnerships with other higher education institutions for research and teaching purposes, universities can stay competitive and contribute to the achievement of SDG 9.



LAU'S VIP+ INNOVATION SHOWCASE AND STARTUP COMPETITION: PIONEERING SDG 9 ADVANCEMENTS

The Lebanese American University's (LAU) VIP+ Innovation Showcase and Startup unites students from diverse academic backgrounds to collaborate on ingenious projects that tackle real-world challenges, nurturing a culture of innovation and entrepreneurship critical for cultivating a robust and resilient economy. Furthermore, the VIP+ Innovation Showcase and Startup Competition plays a pivotal role in catalyzing the development of new industries and infrastructure. Many winning startups go on to establish successful businesses, generating employment opportunities and contributing to Lebanon's economic prosperity. Moreover, the competition fosters the adoption of novel technologies that enhance the efficiency and sustainability of Lebanese industries.

For instance, one of the victorious startups from the 2021 VIP+ Innovation Showcase and Startup Competition, Takatcom, is actively working on an energy trading platform facilitating the exchange of surplus solar energy. This initiative holds the potential to reduce Lebanon's dependence on fossil fuels and stimulate the growth of a more sustainable energy sector.

Another winning venture, Cedar BioDiagnostics, is pioneering non-invasive microchips capable of detecting subtle variations in kidney function. This breakthrough technology has the potential to enhance the diagnosis and treatment of kidney disease, a significant public health challenge in Lebanon.

PUBLIC ENGAGEMENT

LAU PROJECT TO INNOVATE IN ARMENIAN EDUCATION

A new project which conveys innovation in education was funded by the Calouste Gulbenkian Foundation. The project focuses on providing professional development for teachers in Armenian schools in Lebanon and developing new educational resources. The project stems from the fact that Western Armenian language teachers and those who teach different subjects in Western Armenian have fewer professional development opportunities as well as minimum access to contextualized pedagogical resources.

Part of the fund will also be used for research and publication. "The teachers' journey will be studied over the two-year period of the project, leading to the development and publication of a manual to disseminate resources and lessons acquired from this project".



REVOLUTIONIZING THE FIELD OF REHABILITATION ENGINEERING

The LAU's seven-year collaboration with Michael Haddad aims to develop an exoskeleton that has the potential to revolutionize the field of rehabilitation engineering.

The exoskeleton is a wearable device that uses robotics to help people with disabilities walk. It is powered by the person wearing it, himself becoming "the battery and motor," without a need for an external source of energy. This makes it a more sustainable and affordable solution than traditional exoskeletons.

The development of the exoskeleton is a significant advancement in the field of industry and innovation. It requires the collaboration of engineers, scientists, and clinicians to design and build a complex and sophisticated device. The project is also a great example of how education can be used to develop innovative solutions to real-world problems.

The exoskeleton has the potential to have a major impact on the lives of millions of people around the world. It could help paraplegics to walk independently giving them greater freedom and independence. The exoskeleton could also be used to improve the mobility of people with other disabilities such as stroke survivors and people with multiple sclerosis.

PHARMACY RESIDENCY CONFERENCE DRIVES INNOVATION

The pharmacy residency **conference** provides a platform for pharmacy residents to showcase their research on new and innovative ways to improve pharmacy practices. The research has the potential to lead to the development of new products and services, as well as more efficient and effective ways to deliver pharmacy care.

Through this conference new partnerships can be built between academia and industry, which can lead to the development of new technologies and the commercialization of innovative pharmacy research. In addition, the conference helps to promote

the use of technology in pharmacy practice which can lead to more efficient and effective ways to deliver patient care.

THE RE-DESIGN OF BEIRUT PORT

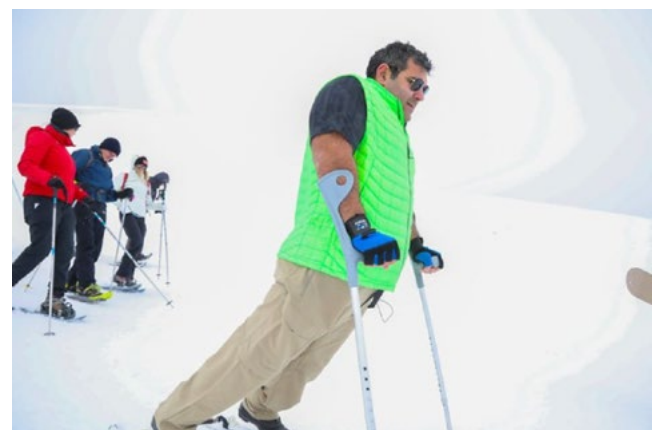
In the aftermath of the devastating explosion on August 4th, **the redesigning of the port** and its integration with the city, as presented by Dr. Maroun Daccache, signifies a commitment to enhancing infrastructure and fostering innovation in urban development. This project not only aims to rebuild the physical infrastructure but also seeks to reconnect the city's people with the global community. Beirut's journey towards recovery and transformation is integral to the broader vision of achieving SDG 9.



LEARNING & STUDENTS

The **Michael Haddad Embarks on Arctic Walk project** is developing innovative solutions to the challenges of climate change and sustainable development in the Arctic. It is helping to develop design and new technologies, for example, the team created a ventilated face mask for Haddad, who expends approximately 30 times more energy while walking, and therefore requires more oxygen than the average person.

Haddad, who is paralyzed from the chest down, will perform his odds-defying symbolic walk with the aid of a **specially designed exoskeleton** devised by a scientific team of engineers and neurologists from LAU and the American University of Beirut.



LAU'S SUCCESS AT DUBAI LYNX

LAU's success at the Dubai Lynx is a reflection of the innovative and cutting-edge education that the university offers in communication and design. LAU's programs are designed to prepare students for careers in the creative industries, and to provide them with the skills and knowledge they need to succeed in the rapidly changing digital world. LAU's programs in communication and design are preparing students to be the leaders of the future in the creative industries, which are a major driver of innovation and economic growth.

LAU AWARDS YOUNG RESEARCHERS FOR PUBLISHED WORK

The Lebanese American University's recent recognition of young researchers for their published work is a testament to the university's commitment to innovation. The LAU Young Researchers Awards recognize students who have published their research in high-impact peer-reviewed journals. This is a significant achievement, as it demonstrates that the student's work is of the highest quality and has the potential to make a significant contribution to their field.

This recognition is important for several reasons. First, it encourages students to pursue innovative research and to develop their critical thinking and problem-solving skills. Second, it helps to raise the profile of LAU research and to attract top students and faculty to the university. Third, it contributes to the advancement of knowledge and the development of innovative solutions to real-world problems.

INNOVATING WITH L'ORÉAL

The collaboration between LAU and L'Oréal demonstrates a commitment to innovation in the field of cosmetics and beauty products. LAU's Engineering and Architecture students engaged in projects related to the cosmetics industry, fostering technological advancements and creativity. This initiative promotes the development of new industries and infrastructure, as students are exposed to cutting-edge technologies and practical applications. It also contributes to Lebanon's economic growth by supporting innovation in an industry that has a global market. Overall, the collaboration between LAU and L'Oréal exemplifies a commitment to fostering innovation and advancing industry.

INNOVATION AND TECHNOLOGY THROUGH ROBOTICS COMPETITIONS

Students from schools across Lebanon immersed themselves in the world of robotics at the World Robot Olympiad national competition (WRO-Lebanon 2022), My Robot My Friend, co-organized by the WRO-Lebanon Section and LAU.

The World Robot Olympiad (WRO) in Lebanon promotes innovation and technology through robotics competitions. It encourages students to explore engineering, computer science, and technology, nurturing a new generation of innovators and problem solvers. This event demonstrates Lebanon's commitment to advancing its technological infrastructure and education in challenging times.

LAU EARNS NASAD ACCREDITATION

Lebanese American University (LAU) has achieved accreditation from the National Association of Schools of Art and Design (NASAD). This accreditation, following LAU's previous recognition by the American National Architectural Accrediting Board (NAAB), underscores LAU's commitment to advancing art and design education in the region. The rigorous accreditation process involved evaluations of various programs and curricular enhancements, marking LAU's dedication to upholding recognized standards in the United States. LAU's institutional membership in NASAD signifies its commitment to collaboration, promoting optimal learning conditions for art and design students, and sharing expertise. This achievement positions LAU as a unique school of architecture and design in the region and highlights its plans to expand graduate program offerings to meet growing demands for design specialization.



GOAL

10

REDUCED
INEQUALITIES

10 REDUCED
INEQUALITIES



*Reduce inequality within
and among countries*

75

Scholarly
Output

RESEARCH

NEW AND INNOVATIVE SOLUTION TO A MAJOR CHALLENGE

We have been collaborating with Michael Haddad for seven years to develop an **exoskeleton** that has the potential to revolutionize the field of rehabilitation engineering and give paraplegics the opportunity to walk independently. This project is also providing valuable learning opportunities for all our students from all backgrounds and nationalities, helping them develop the skills and knowledge they need to succeed in various fields. By doing so, they can break the cycle of poverty and create a better future for themselves and their communities.

This project is developing a new and innovative solution to a major challenge, and it is doing so through rigorous scientific research. The research team is studying Haddad's nervous system in order to better understand how he is able to walk, and they are using this knowledge to develop an exoskeleton that can help other paraplegics walk independently.

DRIVERS OF YOUTH IRREGULAR MIGRATION: EVIDENCE FROM THE MENA REGION

A **study** by faculty members in the Department of Economics at the Adnan Kassar School of Business (AKSOB), focuses on the drivers of irregular migration among youth in the MENA region. Using a unique dataset from the SAHWA Project, the study analyzed data from five Arab countries.

The study highlights the impact of economic constraints, unemployment, and job instability on migration decisions, underscoring the disparities and inequalities that drive youth to take irregular migration routes. Addressing these underlying inequalities is crucial for creating a more just and equitable society.

WORKING WITH LGBTIQ+ PERSONS IN FORCED DISPLACEMENT

The research project that examined the direct and indirect impacts of conflict and displacement in the context of the Syrian Civil War on persons of diverse sexual SOGIESC, both in Syria and in neighboring countries, in particular Lebanon and, to a lesser extent, Turkey, contributes to the goal of reducing inequalities by focusing on working with LGBTIQ+ persons in forced displacement situations. It advocates for the fair and equal treatment of marginalized and vulnerable groups, including those who identify as LGBTIQ+. By examining their narratives and experiences, the research shed light on the discrimination and challenges faced by these individuals, ultimately advocating for their inclusion, protection, and support.

The research also highlights the importance of acknowledging and addressing the specific needs and vulnerabilities of LGBTIQ+ individuals in forced displacement, promoting their inclusion in humanitarian responses, and working towards reducing the disparities they face.

DEFINING PERSECUTION: THE CASE OF CLIMATE REFUGEES AND THE 1951 CONVENTION

The study delves into the evolving dynamics of persecution and displacement resulting from environmental factors, particularly climate change, and how these cases are approached within the framework of the 1951 Convention. By doing so, the study contributes to the broader discussion on addressing inequalities in refugee protection. It also underscores the importance of reevaluating and expanding definitions of persecution to encompass those driven from their homes due to environmental crises.

COMPARATIVE STUDY OF VIOLENCE AGAINST FEMALE REPORTERS AND MALE REPORTERS

The Comparative Study of Violence Against Female Reporters and Male Reporters During Lebanon's 2019 Protest Movement examines the various forms of violence, its root causes, and the impact on women's lives. The study contributes to the understanding of inequality and discrimination. It emphasizes the importance of promoting gender equality, ensuring women's equal rights, and eradicating all forms of violence against women. The research highlights the disparities and discrimination that women face in different regions. It underscores the need for concerted efforts to create a more inclusive and equitable world where women can live free from violence and discrimination.



OPERATIONS

ARTISTS RISE FOR REDUCED INEQUALITY

Education is a key to sustainable development, and it is essential for building a better future for Lebanon by reducing inequalities and giving students equal chances in accessing education. That is why we held Artists Rise, our first-ever virtual fundraising event to raise funds for the LAU Emergency Financial Aid Fund in support of students who are struggling to afford their tuition due to the ongoing economic crisis in Lebanon.

The performances by Lebanese artists, including singers, musicians, and comedians were streamed live on LAU's social media channels. Over \$1 million were raised for the LAU Emergency Financial Aid Fund.

GRADUATE PROGRAM SCHOLARSHIPS

To ensure equality in education, our Graduate Program Scholarships are dedicated to graduate students, including merit-based scholarships, need-based scholarships, and scholarships for specific programs or fields of study. It is available to students who are pursuing a master's degree at LAU in a variety of fields, including business, education, engineering and the humanities.

The Graduate Program Scholarships are one of the most prestigious scholarships offered by LAU, and they are awarded to students who have demonstrated academic excellence and leadership potential.



LAU CREATES ACCESSIBLE CAMPUS FOR ALL STUDENTS, PROMOTING EQUALITY

We are committed to creating an **accessible** campus for all students, regardless of their abilities. We have made a significant progress in recent years in making our campus more accessible. The university has installed wheelchair ramps, elevators, and accessible bathrooms in all of its buildings. LAU has also provided training to its staff on how to support students with disabilities.

In addition to its physical accessibility, LAU also offers a variety of academic and support services for students with disabilities. The university has a dedicated Disability Services office that provides students with accommodations such as extended time on exams, note-takers, and sign language interpreters.

LAU's commitment to accessibility is making a difference in the lives of its students. Students with disabilities are now able to participate fully in all aspects of university life, from academics to extracurricular activities.

GRADUATE PROGRAM SCHOLARSHIPS PROMOTE EQUITY AND OPPORTUNITY

By waiving full tuition, the **Graduate Programs Scholarships** aim to help students focus entirely on advancing their research skills in preparation for their doctoral studies.

Graduates get to cultivate their research skills in their respective fields and are consistently encouraged by faculty members to publish their term papers. But the Graduate Program Scholarships "compel you to do more than what is required in your course work, such as further editing and revising your research papers and attending research workshops".

So, while "graduate programs at LAU give students an equal opportunity to advance their research skills, the Graduate Program Scholarships ensures that they do."

194 STUDENTS
with disability
out of 7453 students



6 EMPLOYEES
with disability
out of 1407 employees

EQUALITY FOR EVERYONE: GENDER REFORM FROM GRASSROOTS TO GOVERNMENT

The AiW completed a project called "**Equality for Everyone: Gender Reform from Grassroots to Government**" which was funded by the United States – Middle East Partnership Initiative (U.S-MEPI). The project aimed to promote universal parental leave and progressive childcare policies among Lebanese working parents to achieve greater gender equality in Lebanon.

The project targeted parental leaves policies within the private and public sectors, with a focus on policy change on the national level. The project also targeted LAU as a pilot project for policy change regarding parental leave policies. Within the context of this project, the AiW produced a policy brief detailing the importance of improving parental leave policies in Lebanon on the national level as well as several other research papers for the purpose of motivating private companies to improve their own parental leave policies.

In addition, the AiW and the National Commission for Lebanese Women (NCLW) submitted a draft law to the Lebanese Parliament to amend labor laws to include better parental leave policies. Furthermore, the AiW launched a national advocacy campaign to raise awareness among Lebanese men and women about the importance of parental leave in improving the status of women in the workplace and to pressure decision-makers in Lebanon to adopt the draft law.



EMPOWERING WOMEN FOR REDUCED INEQUALITIES ACROSS THE ARAB WORLD

Established in 1985, **The Qudwa Basic Living Skills Program** was a non-formal educational kit in Arabic, designed to empower illiterate and semi-literate women in the Arab world. This innovative program, available in both hard copy and digitized forms, is a catalyst for change. It equips social workers affiliated with non-governmental organizations, governmental institutions, and international organizations engaged in community development programs. Qudwa's uniqueness lies in its simplicity, innovation, and comprehensiveness. It offers self-explanatory and integrated learning materials supported by a range of tools, from illustrations and posters to colored pictures, games, documents, and case studies.

Moreover, Qudwa provides evaluation forms to assess its impact on women's lives and achievements, a testament to its commitment to reducing inequalities. With a goal to strengthen the capacities of Arab women and make them active participants in sustainable and equitable development, Qudwa's content was thoroughly updated in 2017-18, covering vital themes such as human rights, gender equality, health, and socio-economic empowerment. Over the years, it has transformed the lives of over 60,000 women in Lebanon and trained more than 10,000 individuals.

LAU AND NYU TISCH: A THEATRICAL COLLABORATION FOR QUALITY EDUCATION

The Lebanese American University (LAU) and NYU Tisch School of the Arts have collaborated on a theatrical production. **The play, "Amrika"**, written by Dr. Lina Abyad, recounts the lives of Lebanese women immigrants to New York City in the late 19th century. This international collaboration provided LAU performing arts students with a unique opportunity to develop their craft professionally. The students worked on the script and production, gaining invaluable experience and skills. During their stay in New York, LAU students were paired with five NYU students to work on the script and the production in general.

Written by Dr. Abyad, and told in a series of vignettes, *Amrika* recounts the lives of Lebanese women immigrants to New York City in the late 19th century. The women arrived on the heels of the closing of Lebanon's silk factories, which precipitated an economic crisis in the country. In their new home they found work, brought over their families, and eventually flourished: "The stories that we tell in this play include widows, ambitious young wives and newlyweds who left their spouses behind". "They often made the painful discovery that America's streets weren't always paved with gold."

WISSAM MOUKAHAL'S SUPPORT FOR LEBANESE YOUTH PROMOTES REDUCED INEQUALITIES

By providing financial assistance and mentorship to LAU students, Wissam Moukahal is helping to reduce educational and economic inequalities in Lebanon. Moukahal's commitment to reduce inequalities is evident in his focus on supporting female students. He has made a condition that at least **50% of the scholarship recipients be female**. By providing scholarships to female students, Moukahal is helping to level the playing field and give them the opportunity to reach their full potential.

Moukahal's support also helps to reduce economic inequalities. Many students from low-income families would not be able to attend LAU without financial assistance. Moukahal's scholarships provide these students with the opportunity to get a quality education and improve their chances of success in life.

In addition to reducing educational and economic inequalities, Moukahal's support also helps to promote social cohesion. By bringing together students from different backgrounds, Moukahal's foundation is helping to build a more inclusive and equitable society.

PREVENTING HARASSMENT

Our **Harassment Policy** aims to create a safe and respectful environment free from harassment, ensuring that all members of the university community are treated equitably. By addressing issues of harassment and discrimination, we aim by this policy to contribute to making LAU a more inclusive place for students, faculty, and staff. The policy also supports efforts to empower and promote the social, economic, and political inclusion of all individuals, regardless of their background. By providing a framework to address and prevent harassment, our policy creates a more just and equal community within the university.

PUBLIC ENGAGEMENT

A PLATFORM FOR LGBTQ YOUTH

In an effort to reduce inequalities in the Lebanese society, The Arab Institute for Women (AiW), has launched a new **online platform** called *Shabaket el Meem* to provide support and information to LGBTQ youth in Lebanon. The platform features short animations, a podcast series, a Q&A section, a glossary of LGBTQ terms in English and Arabic, and a map where visitors can share their own experiences.

With funding from the Embassy of Netherlands in Lebanon, the platform was created in response to the dearth of reliable information and support available to the LGBTQ community in Lebanon. The platform aims among other objectives, to raise awareness and understanding of LGBTQ issues in Lebanon.

CREATING A SUPPORTIVE AND INCLUSIVE ENVIRONMENT FOR ALL

By **engaging LAU Faculty and Staff in a Mental Health Support System**, we aim to help reduce inequalities within the university community, ensuring that everyone has the opportunity to access essential mental health services. We emphasize by this engagement the importance of creating a supportive and inclusive environment for all faculty and staff members, regardless of their mental health challenges and recognize that supporting the mental health of faculty and staff is crucial for their overall well-being and participation in the university community.

In this initiative we call for improved access to mental health services and support and advocate for capacity building within the university to better support mental health.

297

**international students
from developing countries
out of 7453 students**

PROFESSIONAL DEVELOPMENT AND EDUCATIONAL RESOURCES FOR ARMENIAN LANGUAGE TEACHERS SCHOOLS

The Calouste Gulbenkian Foundation has funded a new project by the Lebanese American University (LAU) to promote inclusive and equitable quality education for Armenian students in Lebanon. The project will focus on providing teachers professional development and developing new contextualized pedagogical resources.

This project aims to address inequality in education by providing Armenian students with access to high-quality education.

The project will benefit Western Armenian language teachers and those who teach different subjects in Western Armenian, who often have fewer professional development opportunities and limited access to contextualized pedagogical resources. The project will also include a research component, with the aim of developing and publishing a manual to disseminate resources and lessons acquired from the project.

ARCTIC WALK FOR CLIMATE RESILIENCE & FOOD SECURITY

Michael Haddad, the United Nations Development Programme (UNDP) Regional Goodwill Ambassador, has completed his Arctic Walk for Climate Resilience and Food Security. The walk started by the beginning of 2022 in Beirut and Rome, and concluded on Spitsbergen Island, in Norway's Svalbard archipelago. Haddad delivered seed samples from twelve Arab countries and a book by Pope Francis to the Svalbard Global Seed Vault, the world's largest backup facility for seeds. The seeds of wheat, barley, lentil, chickpea, and other forage legumes from Algeria, Egypt, Iraq, Jordan, Lebanon, Libya, Morocco, Oman, the State of Palestine, Syria, Tunisia, and Yemen were deposited to the Svalbard Global Seed Vault for secure long-term storage as a critical backup to help safeguard global crop diversity. The Arctic Walk for Climate Resilience and Food Security aims to call for action to address the global climate emergency.

The Arctic Walk for Climate Resilience and Food Security is aligned with Sustainable Development Goal 10 which aims to reduce inequality within and among countries. By providing seed samples from twelve Arab countries to the Svalbard Global Seed Vault for secure long-term storage as a critical backup to help safeguard global crop diversity, Haddad's Arctic Walk is helping to reduce inequality by ensuring that all countries have access to diverse crops that can withstand climate change.



A RESOUNDING CALL TO ACTION TO CONFRONT THE GLOBAL CLIMATE EMERGENCY

Michael Haddad, who serves as the Regional Goodwill Ambassador for the United Nations Development Programme (UNDP), successfully concluded his Arctic Walk for Climate Resilience and Food Security. The Arctic Walk for Climate Resilience and Food Security is not merely a symbolic endeavor; it represents a resounding call to action to confront the ever-pressing global climate emergency.

The project's objective is to deliver seed samples from Arab countries to the Svalbard Global Seed Vault, which can indirectly promote access to genetic resources for crop diversity. Ensuring access to diverse crops can be essential for reducing inequality in terms of food security and agricultural resources.

Michael Haddad's mission is to raise awareness about climate change and food security. Climate change can disproportionately impact vulnerable communities and contribute to inequalities, particularly in terms of access to resources. Enhancing climate resilience can indirectly address inequality concerns.

FOR SUSTAINABLE GENDER EQUITY

In collaboration with the Arab Institute for Women (AiW), the US Middle East Partnership Initiative Tomorrow's Leaders Gender Scholars Program (MEPI-TLS), the end-of-year conference titled MEPI-TLS Scholars for Sustainable Gender Equality highlights efforts to promote gender equity and inclusivity in the workplace. Promoting women's leadership and participation, contribute to achieving the goal of reducing inequalities and promoting fairness. This conference addressed the importance of sustainable gender equity, which is essential for creating a more just and equitable society. The discussions at the conference highlighted that women are underrepresented in STEM fields. We aim to remove discriminatory barriers to women's participation in the workforce and leadership positions is vital.

LEARNING & STUDENTS

LAU'S NASAD ACCREDITATION

NASAD is the National Association of Schools of Art and Design, and its accreditation is a mark of distinction for art and design schools in the United States.

LAU's NASAD accreditation is particularly important for Lebanon, as it is the first art and design school in the country to receive this accreditation.

This is a testament to the high quality of education that LAU offers in art and design, and its commitment to making this education accessible to all students, regardless of their socioeconomic background.

LAU's NASAD accreditation helps to achieve this goal by providing Lebanese students with access to high-quality art and design education at an internationally accredited institution, regardless of their financial resources.

In addition, LAU's NASAD accreditation helps to promote social mobility. By providing students with the skills and knowledge they need to succeed in the creative industries, LAU is helping to create new opportunities for them to improve their socioeconomic status.

RECOGNITION OF DIVERSE TALENTS ARE KEY COMPONENTS TO REDUCING INEQUALITY

LAU's Office of Graduate Studies and Research (GSR) is dedicated to promoting inclusivity and equal opportunities. They recently organized the inaugural Young Researcher Awards, honoring both undergraduate and graduate students for their outstanding research contributions. By recognizing students from various backgrounds and fields, LAU aims to reduce educational inequalities and foster a culture of inclusivity. This initiative encourages young researchers to pursue their academic and professional aspirations, regardless of their socio-economic status. Through these awards, LAU takes a step towards creating a more equitable educational environment. Inclusivity and recognition of diverse talents are key components to reducing inequality. This approach not only empowers students but also enhances the visibility of their work, contributing to a fairer and more inclusive society.



BRIDGING THE GAP LAU'S INTERDISCIPLINARY APPROACH TO REDUCING INEQUALITIES AND FOSTERING INNOVATION

School of Arts and Sciences (SoAS) has undertaken a significant restructure aimed at promoting interdisciplinary education. By consolidating departments and promoting collaboration across disciplines, the school is enhancing the quality of education and preparing students for a rapidly changing job market. The restructuring emphasizes the importance of multidisciplinary pedagogy, enabling students to gain a more comprehensive and holistic education. The creation of the Department of Liberal Education and the redesign of curricula encourage students to think critically about global problems, further promoting the goals of SDG 10 by addressing inequalities and fostering inclusive education. The changes reflect the commitment of providing students with a competitive edge in the job market.

CREATIVE WRITING PROGRAM TOPICS TO PROMOTE INCLUSION AND REDUCE INEQUALITIES

The Creative Writing program has also been revamped with new courses like Life Writing and Illness Writing. These courses are offered for the first time at LAU, ensuring equal opportunity for all students to learn and grow.

The theme for 2022 competition, Gender, derives from the ideas and topics that have been previously explored by students over the years. Some examples include sexism, #metoo, sexual harassment, sexual minority rights, youth and gender activism, bullying, and coming of age. All topics promoting inclusion and reducing inequalities within the student community and in the larger one.



EMPOWERING WOMEN AND YOUTH THROUGH MEDIA LITERACY

The Media Digital Literacy Academy of Beirut (MDLAB) focuses on empowering women and youth through media literacy pedagogies and multimedia skills. The MDLAB promotes social, economic, and political inclusion of all, irrespective of age, sex, disability, race, ethnicity, origin, religion, economic or other status. The academy aims to bring together students and scholars from all over the Arab world and Europe for academic and cultural exchange. The focus was on discussing pressing current issues of women, youth and media, and developing locally rooted media literacy curricula.

MDLAB 2022 hosted 75 participants from Egypt, Palestine, Iraq, Jordan, Lebanon, Algeria, Morocco, Tunisia, and Germany to address the representation of women, youth and other marginalized groups in the coverage of protests and civic activism campaigns.

AKSOB FACULTY TALK INTERNATIONAL FUNDS AND ECONOMIC REFORM AFTER BEIRUT'S BLAST

The AKSOB Faculty's discussion on international funds and economic reform in the wake of the Beirut explosion is a significant response to the immediate crisis. By addressing the pressing issue of reducing inequalities, the talk highlights the importance of distributing international resources fairly to support the most vulnerable communities. Moreover, the focus of associate professors of economics at the Adnan Kassar School of Business (AKSOB), Dr. Walid Marrouch and Dr. Hussein Zeaiter on promoting social, economic, and political inclusion demonstrates a commitment to ensure that all citizens affected by the blast have an equal opportunity for recovery and development. Additionally, their insights into economic reform and the effective use of international funds, signify a step toward enhancing the capacity of institutions to support sustainable development and social inclusion.

GOAL

11

SUSTAINABLE CITIES AND COMMUNITIES

11 SUSTAINABLE CITIES
AND COMMUNITIES



*Make cities inclusive, safe,
resilient and sustainable*

88

Scholarly
Output

OPERATIONS

PROMOTING SUSTAINABLE AND LIVABLE CITIES: SUSTAINABLE DESIGN AND CONSTRUCTION AND ENVIRONMENTAL PROTECTION INITIATIVES

We are committed to promoting sustainable and livable cities through our sustainable design, construction and environmental protection initiatives. LAU's new and renovated buildings are designed to be sustainable and energy-efficient. The university's LEED Gold-certified Joseph Jabbara Library and Riyadh Nassar Central Administration building features a number of sustainable design features, such as a solar water heating system, a rainwater harvesting system, and energy-efficient lighting and appliances.

Other sustainable design features used in LAU buildings include: green roofs, natural ventilation, energy-efficient windows, recycled materials, low-VOC paints and finishes.

We are committed to protecting the environment through a variety of initiatives, including: reducing its carbon footprint, protecting and restoring water-related ecosystems, reducing air pollution, minimizing waste production. Our environmental protection initiatives include: Installing solar panels on our campuses, planting trees and shrubs, reducing water consumption, recycling and composting and minimizing hazardous waste production.



LAU AND BSU COLLABORATION PROMOTING CROSS-CULTURAL DIALOG

In this innovative partnership between Lebanese American University (LAU) and Boise State University (BSU), students from different cultural backgrounds embarked on a virtual exchange program aimed at promoting cross-cultural dialog and addressing UN Sustainable Development Goal 11. Through the use of technology, they overcame the challenges of time zone differences and language barriers, working on projects that foster understanding and creativity. The exchange, not only facilitated the sharing of innovative solutions, but also expanded students' knowledge of diverse cultures and global perspectives, breaking down preconceptions and nurturing critical thinking skills. LAU and BSU's collaboration transcend geographical boundaries and fosters the exchange of ideas for a more interconnected world.

LAU AND NYU TISCH COLLABORATE ON THEATRICAL PRODUCTION

In a remarkable collaboration between Lebanese American University (LAU) and New York University's Tisch School of the Arts, the theatrical production of Dr. Lina Abyad's play, "Amrika," brought together students from both institutions. For six weeks, LAU performing arts students joined forces with their NYU counterparts to stage this compelling play, recounting the stories of Lebanese women immigrants who arrived in New York City in the late 19th century.

These women, faced economic challenges in their homeland, found new opportunities in America, and their tales shed light on the struggles and triumphs of immigrants. This cross-cultural collaboration not only enriched the students, but also celebrated the resilience of immigrants and the cultural diversity that defines the heart of urban communities.



The success of this international collaboration underscores the significance of partnerships and transcultural storytelling, making the world more interconnected and diverse, a vital component of sustainable urban development.

FOSTERING URBAN INNOVATION: LAU'S VIP+ STARTUP COMPETITION

LAU's VIP+ Innovation Showcase and Startup Competition aims to make cities and human settlements inclusive, safe, resilient, and sustainable. This initiative, supported by the US Department of State Middle East Partnership Initiative (US MEPI), embraces innovative thinking and entrepreneurship as a means to address urban challenges and foster sustainable development. By implementing the Vertically Integrated Project (VIP) framework, LAU promotes interdisciplinary collaboration among students, faculty, graduate students, and industry partners, emphasizing the importance of a multi-stakeholder approach in building resilient and sustainable cities. The incorporation of entrepreneurship into the VIP+ model

not only encourages students to innovate but also empowers them to create startups that offer solutions to urban challenges. This competition celebrates innovation and entrepreneurship, key components in advancing urban sustainability, and serves as a catalyst for the development of startups dedicated to addressing critical urban issues.

The winning teams, Cedar BioDiagnostics, Takatcom, Mindzone, LUXEED Robotics, and 1TRIBE, exemplify the spirit of innovation with their diverse projects, ranging from healthcare to sustainable agriculture and technology-driven learning. In addition to monetary awards, the winners will receive vital support and training, ensuring their projects contribute to the sustainable development of cities and urban areas.

SUSTAINABILITY OF THE CITY

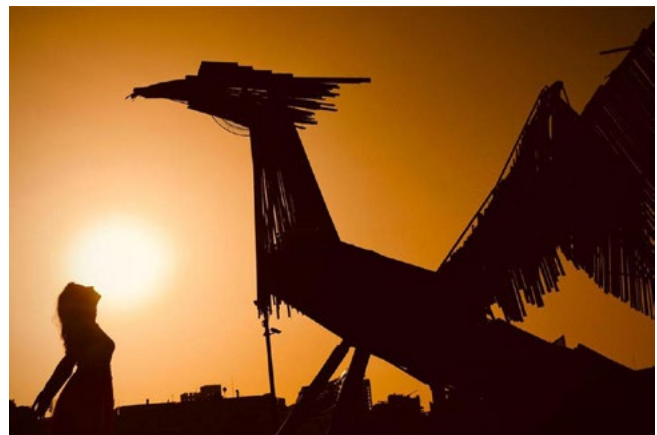
The project focused on the re-design of Beirut Port, following the tragic explosion in August 2020, making significant strides toward achieving the Sustainable Development Goal 11, which emphasizes on the importance of making cities and human settlements inclusive, safe, resilient, and sustainable. By proposing the extension of the port and enhancing its accessibility to the public, the project aims to create a more inclusive and integrated urban space. This effort not only addresses the immediate aftermath of the explosion, but also contributes to the long-term resilience and sustainability of the city. Through urban planning and design, the project demonstrates a commitment to improving the living conditions of Beirut's residents and ensuring the city's readiness to face future challenges.

PROMOTING SUSTAINABLE AND HEALTHY COMMUNITIES: THE LITANI BASIN WASTE MANAGEMENT PROJECT"

By effectively managing waste in this region, the implementation of the sustainable waste management project in the Litani Basin addresses a critical aspect of creating more sustainable and healthy communities. Proper waste management not only helps in reducing pollution, but also enhances public health and fosters environmental sustainability, which are fundamental components of building resilient and sustainable cities. This initiative reflects the commitment to making urban areas inclusive, safe, and environmentally responsible.

FOSTERING RESILIENT AND INCLUSIVE CITIES: A JOURNEY OF HEALING AND JUSTICE

On Fighting Back and Finding Truth through arts underscores the importance of fostering resilient and inclusive cities. It explores the experiences of survivors and advocates who have worked to address issues related to violence and conflict, emphasizing the role of urban settings in both exacerbating and mitigating these challenges. By promoting dialogue, justice, and social cohesion within cities, this article contributes to creating urban environments that are more sustainable, safe, and supportive of the well-being of all residents. It highlights the significance of community engagement and the pursuit of truth and reconciliation as critical steps toward building resilient and inclusive cities.



LEARNING & STUDENTS

"STUDYING A TIME CAPSULE FROM THE PAST HAS THE POWER TO SPARK NEW WAYS OF THINKING."

The Phaistos Project – Forty-five Symbols is an inclusive and engaging learning experience that brings together students from different backgrounds and nationalities to explore important global challenges. It encourages students to use design methodologies to translate current concerns into unique visual narratives. This type of creative and innovative thinking is essential for solving the complex challenges facing cities and communities today.

The Phaistos Project was initiated when students with different backgrounds and nationalities, were asked: "What is your truth?", "What is your message, narrative, or statement that you would like to preserve for future generations?" We as LAU, answered these questions simultaneously with other four cities across the globe: New York, Cologne, Bogotá and Hong Kong.



Studying a time capsule from the past has the power to spark new ways of thinking. The Phaistos Disc, which was discovered in 1908, and is thought to date to around 1700 BC, is a circular piece of fired clay stamped with forty-five distinct symbols. This code is still unresolved. It inspires the participants to translate current concerns — political, economic, ecological, cultural, or social challenges — into collections of forty-five unique symbols. Design methodologies that are used as a mode of inquiry to develop ethnographic visual narratives that are subjective, stimulating, and capture visual traces of the Anthropocene.

Of course, materials and devices have evolved. Today, clay is code, interfaces are fluid (and not discs) and the access to knowledge is ubiquitous through mobile devices. However: Whose knowledge, is it? Who really has access? What are the questions that emerging designers have for human kind today and which narratives are worth being preserved for future generations?



MORE SUSTAINABLE AND INCLUSIVE CAMPUS AND COMMUNITY

The recent Young Researcher Awards ceremony celebrated students who have contributed to creating sustainable and resilient communities through their research. By acknowledging these efforts, LAU encourages students to explore innovative solutions to urban problems and promote sustainable development. This recognition aligns with the university's goal of creating a more sustainable and inclusive campus and community.

EMPOWERING BEIRUT'S CHILDREN THROUGH PLAY THERAPY: A STEP TOWARDS RESILIENT CITIES

In the pursuit of creating inclusive, safe, and resilient cities, the initiative outlined in "Overcoming Trauma Through Play", stands out as a beacon of hope. By using the power of play therapy, this program seeks to heal and empower vulnerable children in Beirut, a city that has endured its share of trauma, particularly the devastating explosion in 2020. This holistic approach not only aids in the recovery of the affected children but also contributes to building a more resilient community, fostering emotional well-being, and promoting mental health. It aligns with the broader vision of creating urban environments that prioritize the mental and emotional welfare of their citizens, thereby making cities more inclusive and resilient.



GOAL

12

RESPONSIBLE
CONSUMPTION
AND
PRODUCTION

12 RESPONSIBLE
CONSUMPTION
AND PRODUCTION



*Ensure sustainable
consumption
and production patterns*

51

Scholarly
Output

RESEARCH

PROMOTING SUSTAINABLE HEALTHCARE THROUGH VACCINATION INITIATIVES

Lau PharmD Students' Vaccination campaign embodies the principles of Sustainable Development Goal 12, responsible consumption and production. By optimizing the use of available resources, ensuring accurate vaccine distribution, and minimizing wastage, they contribute to sustainable healthcare. Additionally, their advocacy for vaccination education promotes awareness and knowledge about responsible consumption and healthcare practices.



COLLABORATION WITH UN ADVANCES RESPONSIBLE CONSUMPTION AND FOOD SUSTAINABILITY

The objective of the report of Dr. Hussein Hassan's partnership with the UN on the food waste is to combat the issue of food waste, a significant challenge in sustainable development. Dr. Hassan's collaboration contributes to the reduction of food waste, the promotion of efficient resource utilization, and the advancement of responsible consumption behaviors. This partnership reflects a dedication to achieving the targets outlined in SDG 12, which include decreasing food loss and waste while fostering the sustainable management of resources. It aligns with the global effort to encourage sustainable and responsible consumption and production.

OPERATIONS

SUSTAINABLE DESIGN AND CONSTRUCTION AND ENVIRONMENTAL PROTECTION INITIATIVES

We promote responsible consumption through our **sustainable design and construction** and environmental protection initiatives. Our new and renovated buildings are designed to reduce the consumption of resources and minimize environmental impact. For example, the LEED Gold-certified Joseph Jabbara Library and Riyad Nassar Central Administration building features a number of sustainable design features that reduce energy and water consumption, such as: solar water heating system, rainwater harvesting system, energy-efficient lighting and appliances, green roof, natural ventilation, energy-efficient windows, recycled materials and low-VOC paints and finishes.

LAU's **environmental protection initiatives** also promote responsible consumption by reducing resource consumption and waste production. For example, we have implemented a number of initiatives like installing solar panels on our campuses to generate renewable energy, reducing our water consumption by 20% through water conservation measures. We also committed to recycling a variety of materials, including paper, plastic, metal, and glass, we composted organic waste and donated reusable items to charity. By purchased products and services that are environmentally friendly and socially responsible, LAUs helped promoting sustainable consumption of resources.



JAR THURAYA: EMPOWERING WOMEN AND PRESERVING TRADITION IN LEBANESE CUISINE

Lebanese women have a long tradition of resourcefulness, particularly when it comes to preserving food, a practice known as 'mouneh.' In recent years, Martine Zaarour noticed a decline in these essential skills, with younger women lacking the knowledge of sun-drying, pickling, and other traditional food preservation methods. Zaarour, an architecture graduate, saw the opportunity to address this issue through her social enterprise, Jar Thuraya. Inspired by the United Nations' Sustainable Development

Goals, particularly those related to women's economic empowerment, she developed a platform that enables women to sell homemade food.

Despite facing challenges due to economic and political instability in Lebanon, Jar Thuraya thrived by **emphasizing the importance of local production**. Each jar carries the name of the woman who prepared its contents, promoting transparency and eco-friendliness. Zaarour's journey from architecture to entrepreneurship underscores the power of a well-rounded education and the impact of preserving cultural and culinary traditions while supporting women's financial independence.

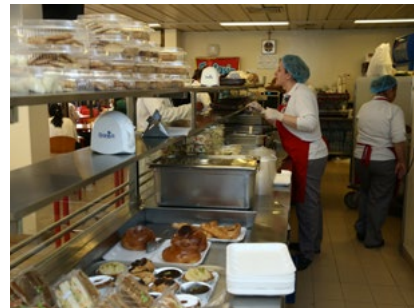


PUBLIC ENGAGEMENT

FOSTERING SUSTAINABLE FOOD SECURITY: A PATH TO A BRIGHTER FUTURE

LAU Associate Professor of Food Science Hussein F. Hassan, LAU Associate Professor of Nutrition Lama Mattar, Professor of Food Science at the American University of Beirut (AUB) Mohamad G. Abiad, and Associate Professor of Applied Economics at AUB Ali Chalak, had been **actively researching and publishing at length about drivers of food waste generation** and its impact on the environment, economy and food security, at both the household and hospitality levels in the country.

The focus of these researches is on the critical issue of food security and how it can be achieved sustainably. They emphasize on the importance of ensuring that people have access to safe, nutritious, and sufficient food. The panel discussion, jointly organized by LAU and AUB, highlights the role of partnerships and collaborations in addressing this challenge and underscores the need for innovative solutions to reduce food waste and increase agricultural productivity. It also touches upon the importance of educating and raising awareness among communities to promote responsible consumption and production practices.



ENSURING FOOD SAFETY DURING POWER OUTAGES: SUSTAINABLE PRACTICES FOR ALL

This article emphasizes the significance of preserving food safety during power outages, particularly in areas with unreliable electricity supply. LAU Associate Professor of Food Science and Technology **Hussein Hassan** offers tip highlighting the need for **proper food storage** and handling techniques to prevent food wastage and ensure access to safe and nutritious meals. By offering practical tips and guidance, it promotes sustainable consumption patterns and responsible food management.



LEARNING & STUDENTS

LAU AWARDS YOUNG RESEARCHERS FOR PUBLISHED WORK

The LAU Young Researchers Awards recognize students who have published their research in peer-reviewed journals. This is a significant achievement, as it demonstrates that the student's work is of high quality and has the potential to make a significant contribution to this important field.

LAU's recognition of young researchers is important for several reasons. First, it encourages students to pursue research on topics related to responsible consumption and production, such as renewable energy, waste management, and sustainable agriculture. Second, it helps to raise the profile of LAU research in this area and to attract top students and faculty to the university. Third, it contributes to the advancement of knowledge and the development of innovative solutions to environmental challenges.



GOAL

13

CLIMATE
ACTION

13 CLIMATE
ACTION



*Take urgent action
to combat climate
change and its impacts*

59

Scholarly
Output



RESEARCH

DEFINING PERSECUTION: THE CASE OF CLIMATE REFUGEES AND THE 1951 CONVENTION

The research on defining persecution in the case of climate refugees and the 1951 Convention highlights the need to address the root causes of climate displacement, integrate climate change measures into national policies and planning, and improve education, awareness-raising, and human and institutional capacity on climate change mitigation, adaptation, impact reduction, and early warning.

Specifically, the research proposes a new definition of persecution that would take into account the indirect and cumulative effects of climate change, as well as the specific vulnerabilities of marginalized groups. The research also makes recommendations for developing a new international legal framework for climate refugees, building the capacity of countries to receive and integrate climate refugees, and reducing greenhouse gas emissions and investing in climate adaptation and mitigation measures.

In addition, the research underlines the need for financial resources to support climate refugees and underscores the importance of capacity building for the refugees and for the countries that host them.



AIR CONDITIONING: A SOLUTION FOR AIR POLLUTION AND CLIMATE CHANGE?

The paper titled *Central air conditioning, air pollution and housing location: evidence from Lebanon* addresses an innovative strategy to combat the challenges of climate change. It analyzes a groundbreaking technology that leverages air conditioning systems to reduce greenhouse gas emissions and enhance environmental sustainability. By significantly mitigating the impact of air conditioning on the environment, this approach contributes to the broader effort of combating climate change and promoting resilience against its adverse effects. This aligns with a particular Sustainable Development Goal focused on urgent actions to address the climate crisis, highlighting the importance of multifaceted solutions to reduce carbon footprints and foster a more sustainable planet.

ABATE OR ADAPT? RESEARCH PROVIDES TIMELY ANSWERS TO CLIMATE ACTION DEBATE

The **research conducted by faculty members** at LAU titled *Adaptation Funding and Greenhouse Gas Emissions: Halo Effect or Complacency?*, offers valuable insights into the ongoing debate surrounding climate action. Their work emphasizes the need for proactive measures to address the challenges posed by climate change. By providing scientific evidence and recommendations for mitigating the impact of environmental shifts, this research supports the overarching objective of fostering climate resilience and sustainable practices. It aligns with a specific Sustainable Development Goal aimed at addressing the climate crisis, underlining the significance of informed decision-making and proactive responses to the climate-related challenges faced by society.



ENVIRONMENTAL DETERMINANTS OF MIGRATION: AIR POLLUTION IN DEVELOPING NATIONS

This research examined environmental factors influencing human migration, with a specific focus on air pollution in developing regions. It sheds light on the intricate relationship between environmental degradation and human mobility, highlighting the profound impact of air pollution on communities. By exploring the consequences of environmental changes on population movement, this study contributes to the broader effort of addressing climate challenges and their associated repercussions.



OPERATIONS

PROMOTING CLIMATE ACTION THROUGH SUSTAINABLE CAMPUS INITIATIVES

We respect our commitment to **climate action** through our sustainable campus initiatives which are aligned with Sustainable Development Goal (SDG) 13.

We implemented a number of energy efficiency measures on our campuses, including installing energy-efficient lighting and appliances, turning off lights and appliances when not in use, and reducing heating and cooling costs. These measures have helped LAU to reduce its energy consumption by 20% in recent years.

We have installed solar panels on several of our buildings and are exploring the possibility of installing other renewable energy sources, such as wind turbines and geothermal power. LAU's solar panels generate enough electricity to power 10% of the university's needs.

We promote sustainable transportation on our campuses by providing bicycle racks, encouraging students and staff to use public transportation, and offering a shuttle bus service. We are also educating our students and staff about climate change and its impacts.



HARNESSING SOLAR ENERGY IN LEBANON

In response to the lack of power and the government's inability to provide electricity during the crisis, the Lebanese have been **transitioning to solar power** and reducing their reliance on fossil fuels. This move, while initially aimed at addressing the power shortage, has also resulted in concrete actions to combat climate change.

This renewable energy project was initiated by the School of Engineering at the Lebanese American University (LAU) in partnership with the United States Agency for International Development's (USAID) Trade and Investment Facilitation. The project contributes to the overall goal of strengthening resilience and adaptive capacity to climate-related hazards.

Furthermore, the project supports efforts to raise awareness and build capacity for climate change mitigation. By reducing greenhouse gas emissions, this transition to solar energy helps mitigate the adverse impacts of climate change. It promotes a more sustainable, climate-resilient future in Lebanon.



IN THE BATTLE AGAINST CLIMATE CHANGE, EVERY EFFORT COUNTS

The carbon emissions analysis of the website lau.edu.lb sheds light on its commitment to addressing climate change. By quantifying and reducing its carbon footprint, this website exemplifies the notion that even digital platforms can play a role in mitigating global warming. It provides a valuable reminder that every effort counts in the battle against environmental challenges. Tracking emissions and promoting web sustainability are small yet meaningful steps that contribute to taking urgent action to combat the raising temperatures and its impacts.

PUBLIC ENGAGEMENT

A RESOUNDING CALL TO ACTION TO CONFRONT THE GLOBAL CLIMATE EMERGENCY

Michael Haddad, who serves as the Regional Goodwill Ambassador for the United Nations Development Programme (UNDP), successfully concluded his Arctic Walk for Climate Resilience and Food Security. His remarkable journey, spanning half a year, commenced in both Beirut and Rome and culminated on Spitsbergen Island, located within Norway's Svalbard archipelago. During this expedition, Haddad undertook the significant task of delivering seed samples from 12 Arab nations, along with a publication authored by Pope Francis, to the Svalbard Global Seed Vault.

This facility, renowned as the largest repository for seed backup globally, now safeguards these seeds of vital crops such as wheat, barley, lentil, chickpea, and other forage legumes originating from Algeria, Egypt, Iraq, Jordan, Lebanon, Libya, Morocco, Oman, Palestine, Syria, Tunisia, and Yemen. This act of depositing these seeds into the Svalbard Global Seed Vault ensures their secure long-term storage, serving as an essential precautionary measure to preserve global crop diversity in the face of mounting climate challenges.



The Arctic Walk for Climate Resilience and Food Security is not merely a symbolic endeavor; it represents a resounding call to action to confront the ever-pressing global climate emergency. Aligned with Sustainable Development Goal 13, which seeks to urgently combat climate change and its far-reaching consequences, Haddad's Arctic Walk stands as a tangible contribution to this global cause. By conveying seed samples

to the Svalbard Global Seed Vault, where they are protected for the long term, this initiative plays a pivotal role in mitigating climate change. It ensures that all nations possess access to diverse crop varieties capable of withstanding the challenges imposed by climate shifts, ultimately bolstering global resilience in the face of environmental changes.

LEARNING & STUDENTS

LAU RECOGNIZES YOUNG RESEARCHERS FOR PUBLISHED WORK ON CLIMATE CHANGE, PROMOTING SDG 13: CLIMATE ACTION

LAU's recent recognition of young researchers for their published work on climate change is a testament to the university's commitment to climate action.

The LAU Young Researchers Awards recognize students who have published in peer-reviewed journals on topics related to climate change, such as renewable energy, climate adaptation, and climate justice. This is a significant achievement, as it demonstrates that the student's work is of high quality and has the potential to make a noteworthy contribution to this important field.

LAU's recognition of young researchers is important for several reasons. First, it encourages students to pursue research on climate change, which is one of the most pressing challenges facing our world today. Second, it helps to raise the profile of LAU research in this area and to attract top students and faculty to the university. Third, it contributes to the advancement of knowledge and the development of innovative solutions to climate change.

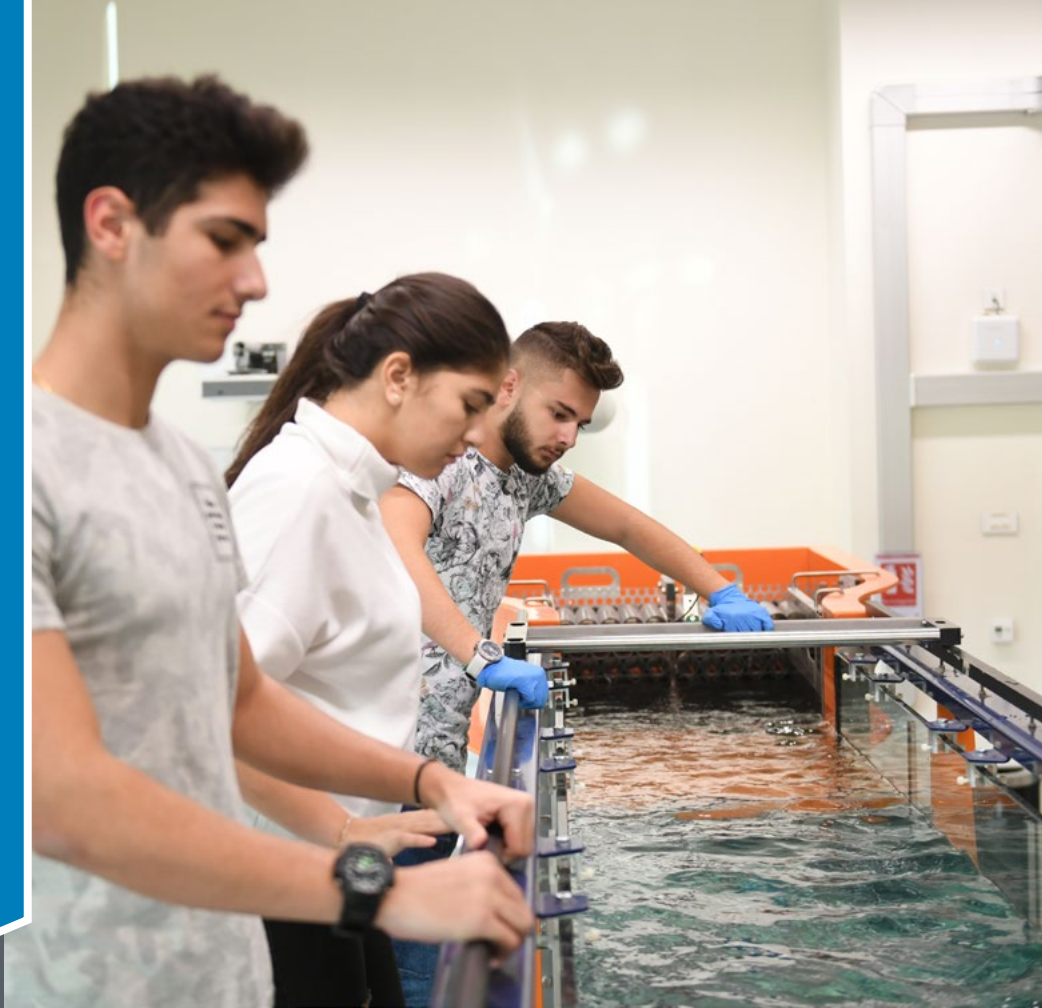
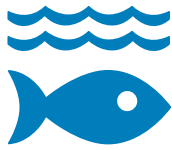


GOAL

14

LIFE BELOW
WATER

14 LIFE BELOW
WATER



Conserve and sustainably use the oceans, seas and marine resources for sustainable development

13

Scholarly
Output

OPERATIONS

MANAGING ORGANIC INDUSTRIAL WASTE

LAU's **Sustainable Waste Management** of the Litani Basin program is making significant progress in addressing pollution in the Litani River Basin. Through anaerobic digestion, the initiative not only helps manage organic industrial waste but also produces methane gas, a cleaner fossil fuel. This innovative approach contributes to sustainable development by reducing the pollution and contaminants in the Litani Basin, which promotes the health and well-being of aquatic ecosystems, aligning with the UN's objective to conserve and sustainably use the oceans, seas, and marine resources.

LEARNING & STUDENTS

ENHANCING FOOD SECURITY AMIDST POWER DISRUPTIONS: A CRITICAL IMPERATIVE

LAU Associate Professor of Food Science and Technology, Dr Hussein Hassan published an article which explores the critical issue of preserving food safety in the face of power disruptions. It underscores the significance of uninterrupted power supply for food preservation, especially in regions with precarious infrastructure. The piece delves into the potential consequences of power cuts on food quality and safety, emphasizing the need for innovative solutions to mitigate such challenges. The content fits within the broader context of sustainable development by emphasizing the importance of resilience in food systems, making it an implicit commentary on one of the Sustainable Development Goals related to the well-being of both people and the environment.

UNMASKING MICROPLASTIC POLLUTION: STUDENT-LED RESEARCH IN PALM ISLANDS NATURAL RESERVE

LAU students conducted research on microplastic pollution in the Palm Islands Natural Reserve. Their study highlights the detrimental impact of microplastics on aquatic ecosystems and the overall ecological balance. It underscores the need for rigorous measures to address and reduce plastic pollution

in marine environments. The research by the students offers valuable insights into the broader framework of marine conservation and sustainable management of natural reserves, aligning with Sustainable Development Goal 14, which aims to preserve the well-being of our oceans and marine life.



GOAL

15

LIFE
ON LAND

15 LIFE
ON LAND



OPERATIONS

PRESERVING SEEDS THAT CAN WITHSTAND CLIMATE CHALLENGES

Michael Haddad's [Arctic Walk for Climate Resilience and Food Security](#) aims to deliver seed samples to the Svalbard Global Seed Vault. Its objective is to deliver seed samples from 12 Arab countries (Algeria, Egypt, Iraq, Jordan, Lebanon, Libya, Morocco, Oman, the State of Palestine, Syria, Tunisia, and Yemen) to the Svalbard Global Seed Vault, contributing to the conservation of plant biodiversity. Preserving a diverse range of plant species' genetic material is crucial for maintaining the health and diversity of terrestrial ecosystems, which is a central aim of SDG 15.

By depositing these seed samples in the Svalbard Global Seed Vault, the project helps safeguard genetic diversity. This genetic diversity is essential for the resilience of plant species and ecosystems, especially in the face of environmental challenges and climate change.

Michael Haddad's mission is to raise awareness about climate change and food security. Climate change can have a significant impact on terrestrial ecosystems, and the project's emphasis on preserving seeds that can withstand climate challenges contributes to the overall goal of protecting life on land.

Projects like this one can raise awareness about the importance of biodiversity, the impact of climate change on terrestrial ecosystems, and the need to preserve and restore these ecosystems. Increased awareness can lead to advocacy for policies and actions that support the responsible use of land and the protection of terrestrial ecosystems.

Protect, restore and promote sustainable use of terrestrial ecosystems, sustainably manage forests, combat desertification, and halt and reverse land degradation and halt biodiversity loss

10

Scholarly
Output



LEARNING & STUDENTS

STUDENTS INVESTIGATE MICROPLASTIC POLLUTION AT PALM ISLANDS NATURAL RESERVE

In their research on microplastic pollution around the Palm Islands Natural Reserve, students at LAU demonstrate a commitment to environmental sustainability. By focusing on the impact of microplastics on the marine ecosystem, they address the broader issue of responsible consumption and production. This work highlights the importance of preserving biodiversity and protecting delicate ecosystems, aligning with the goals of sustainability and responsible resource management. Furthermore, their study contributes to raising awareness about the need for sustainable practices and responsible waste management, which are fundamental aspects of achieving a more environmentally friendly and sustainable future.

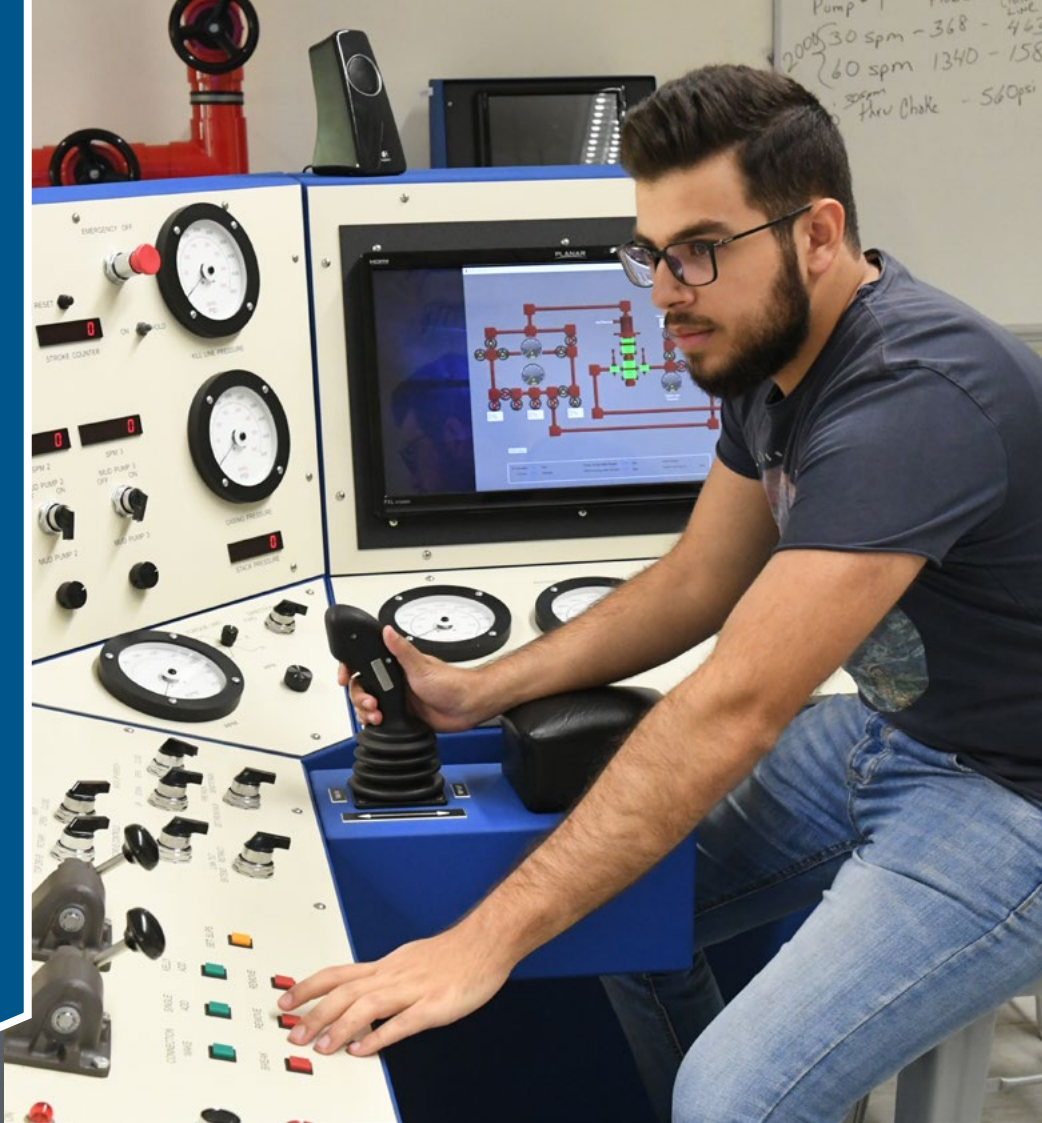


GOAL

16

PEACE,
JUSTICE
AND STRONG
INSTITUTIONS

16 PEACE, JUSTICE
AND STRONG
INSTITUTIONS



*Promote peaceful
and inclusive societies
for sustainable
development, provide
access to justice
for all and build effective,
accountable and inclusive
institutions at all levels*

47

Scholarly
Output

RESEARCH

A COMPARATIVE STUDY OF LEGISLATION ON VIOLENCE AGAINST WOMEN IN THE ARAB REGION

The [research "Comparative Study of Violence Against Women Legislation in the Arab Region"](#) studies the disproportionality between how female reporters covering the protests were targeted with more — and more intense — physical and online violence than their male counterparts were.

It examines the legal frameworks surrounding violence against women in the Arab region, highlighting the need for comprehensive legislation to protect women's rights and promote gender equality. By comparing and analyzing the laws and regulations in various Arab countries, the research contributes to the target of promoting effective, accountable, and inclusive institutions at all levels. It also supports efforts to ensure equal access to justice for all and to reduce all forms of violence and related death rates. Furthermore, the research emphasizes the importance of legislation that aligns with international human rights standards, ultimately contributing to the development of peaceful and just societies.

STRENGTHENING SALES PERFORMANCE: THE ROLE OF TECH TOOLS AND EMPOWERED PERSONNEL

[A study](#) co-authored by Dr. Omar Itani argues for the use of social media, CRM and social CRM in sales and the self-determination of salespeople for optimal co-creation. It explores the endeavor to enhance sales performance through the strategic integration of complementary tech tools and the empowerment of personnel. By fostering stronger, more capable

institutions through technological integration and employee empowerment, the study underscores the importance of organizational effectiveness and transparency, ultimately working towards the creation of a just and well-functioning environment that supports both economic growth and social progress.

PROMOTING INCLUSION AND JUSTICE FOR LGBTIQ+ PEOPLE IN FORCED DISPLACEMENT

This study explores the topic of collaborating with LGBTIQ+ individuals in the context of forced displacement narratives. By addressing these challenges and incorporating their voices into narratives, the initiative contributes to building more equitable and just societies. It highlights the importance of fair representation and social justice, especially for marginalized communities that often face discrimination and exclusion. Through its efforts, the initiative strives to create a more inclusive and just world for all.



FOCUS ON YEMEN

This study, done by Dr. Jasmin Lilian Diab from LAU's Institute for Migration Studies and Anas Jerjawee from Euro-Med Human Rights Monitor, focuses on Yemen. By directing attention to Yemen, the initiative contributes to the broader mission of fostering stability and conflict resolution in regions affected by strife and humanitarian crises. The study highlights the importance of peacebuilding efforts and social justice in conflict-ridden areas, where the restoration of justice and institution-building is vital for sustainable development. Through these efforts, the initiative aims to support a more peaceful and just environment.

OPERATIONS

QUDWA BASIC LIVING SKILLS PROGRAM: EMPOWERING WOMEN FOR PEACE AND JUSTICE IN THE ARAB WORLD

The *Qudwa Basic Living Skills Program*, is an integrated educational kit for illiterate and semi-literate women in the Arab world, offering accessibility through both hard copy and digital formats. What sets *Qudwa* apart is its simplicity, innovation, and comprehensiveness, promoting self-explanatory and integrated learning. This program not only equips learners with essential skills through illustrations, posters, colorful images, games, documents, and case studies but also provides evaluation forms to gauge its impact on women's lives and achievements.

Qudwa seeks to strengthen Arab women's capacities and empower them to actively engage in sustainable and equitable development. With its continuous updates and extensive content, covering various themes including human rights, gender equality, and civic education, *Qudwa* contributes to the establishment of strong institutions and justice. Over the years, the program has made a profound impact on more than 60,000 women in Lebanon and has trained over 10,000 individuals, exemplifying its commitment to promoting peace, justice, and strong institutions in the Arab world.

LAU'S VIP+ INNOVATION SHOWCASE AND STARTUP COMPETITION PROMOTES SDG 16 THROUGH INNOVATION AND ENTREPRENEURSHIP

The VIP+ Innovation Showcase and Startup Competition brings together students from across disciplines to collaborate on innovative projects that address real-world challenges. This helps to foster a culture of creativity and problem-solving, which is essential for building a more peaceful and just society.

In addition to promoting innovation, the VIP+ Innovation Showcase and Startup Competition also supports the development of strong institutions. By providing students with the opportunity to pitch their startups to a jury of experts, the competition helps to identify and nurture emerging talent. The winners of the competition also receive support, mentoring, and training, which helps them to develop their businesses and create jobs.

The five winning startups all have the potential to make a significant impact on society. For example, Cedar BioDiagnostics is developing non-invasive microchips that can detect slight variations in kidney function, which could help to prevent irreversible kidney damage and chronic diseases. Takatcom is designing an energy trading platform that would allow peers to trade excess solar energy, which could help to reduce reliance on fossil fuels and promote sustainable development.

EFFECTIVE INSTITUTIONS TO ENSURE JUSTICE AND FAIRNESS

Our [Harassment Policy](#) provides clear and accessible procedures for reporting and addressing harassment. It ensures that victims have a pathway to seek justice and resolution and outlines the establishment of committees and procedures to address harassment cases promoting inclusive decision-making processes that involve various stakeholders, fostering transparency and accountability.

Our policy aims to reduce corruption and unethical behavior within our institution and underscores the importance of adhering to the law and respecting human rights. By implementing and enforcing the harassment policy we strengthen LAU's capacity to handle such cases effectively. This contributes to building strong institutions that can ensure justice and fairness.

FOSTERING ARTISTIC EXCHANGE: LAU AND NYU TISCH COLLABORATE ON THEATRICAL PRODUCTION

We launched a [collaborative program](#) with NYU Tisch for a theatrical production. "Amrika," a play by Dr. Lina Abyad, associate Professor of Theater, portrays the experiences of Lebanese women who immigrated to New York City in the late 19th century following an economic crisis in Lebanon. Despite initial hardships, these women, including widows and ambitious wives, found work, brought their families over, and ultimately thrived in their new home. This effort brought together students and professionals from both institutions to create and stage a theatrical production. Through this collaboration, students gained invaluable educational and cultural experiences in the field of theater and performing arts. Such initiatives foster international understanding and promote artistic expression, contributing to a more interconnected and diverse world. This program not only enriches the educational experiences of the students but also aligns with the broader goal of cultivating cultural exchange and cooperation, which is a fundamental aspect of global peace.

EDUCATION FOR PEACE: SUPPORT FOR ARMENIAN SCHOOLS

[The collaboration between LAU and the Calouste Gulbenkian Foundation](#) to support Armenian schools's primary objective is to enhance educational opportunities. The broader context of education often plays a vital role in fostering social stability and inclusivity. By providing support to Armenian schools, this partnership not only enriches educational experiences but also supports the promotion of peace and justice, contributing to the development of strong and inclusive institutions that underpin a just and well-functioning society.

PUBLIC ENGAGEMENT

TOWARDS MORE SOCIAL JUSTICE: AN ONLINE PLATFORM FOR LGBTQ YOUTH

Lebanese society suffers from a dearth of reliable information and support available to LGBTQ individuals in Lebanon. The Arab Institute for Women has launched a new [online platform](#) called *Shabaket el Meem*, with funding from the Embassy of Netherlands in Lebanon, which provides support and information to LGBTQ youth. The platform features short animations, a podcast series, a Q&A section, a glossary of terms in English and Arabic, and a map where visitors can share their own experiences. The platform is also an important tool for raising awareness and understanding of LGBTQ issues in Lebanon.

FOR STRONGER INSTITUTIONS, A PROJECT WITH ARMENIAN SCHOOLS

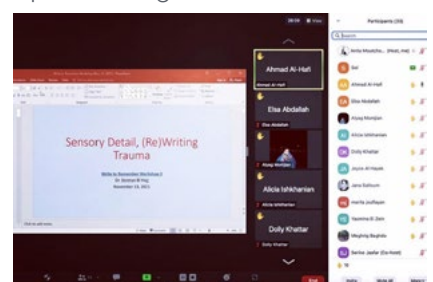
[This project](#) stems from the fact that Western Armenian language teachers and those who teach different subjects in Western Armenian have fewer professional development opportunities as well as minimum access to contextualized pedagogical resources.

A part of the \$125,000 grant from the Calouste Gulbenkian Foundation has been used by LAU. Associate Professor of Education, Hagop Yacoubian, spearheading the project with department's Chairperson Rima Bahous said about the project: "The teachers' journey will be studied over the two-year period of the project, leading to the development and publication of a manual to disseminate resources and lessons acquired from this project".

DEVELOPING SOLUTIONS TO PREVENT FUTURE VIOLENCE

Our [Write to Remember](#) competition gave our students the opportunity to learn about one of the biggest non-nuclear blast in the world, which occurred on August 4, 2020 in Beirut, and its impact on the city and its people through creative writing.

The project helps to reduce violence by promoting peace and understanding and encourages students to think critically about the causes of violence and to develop solutions to prevent future violence. This project promotes the rule of law by teaching students about the importance of justice and equality, encouraging them to stand up for their rights and to hold those in power accountable by combatting corruption and organized crime while raising awareness on these issues and giving students the opportunity to speak out against them. The project also teaches students about the importance of transparency and accountability.



EMPOWERING WOMEN FOR INCLUSIVE PEACE AND SECURITY

The [Regional Capacity Development Workshop on the Women, Peace, and Security Index](#) contributes to broader peace and justice objectives. The Women, Peace, and Security agenda, a fundamental component of gender equality, recognizes the vital role of women in conflict prevention and peacebuilding. By enhancing capacity and raising awareness about this agenda, the workshop paves the way for more inclusive and gender-responsive peace and security efforts. This event was held by the Economic and Social Commission for Western Asia, in partnership with the Arab Institute for Women, Georgetown Institute for Women Peace and Security, and Peace Research Institute Oslo.

LEARNING & STUDENTS

THE PHAISTOS PROJECT

[The Phaistos Project — 45 Symbols](#) is an inclusive and participatory project that brings together students from different backgrounds and nationalities to collaborate on projects related to sustainable development by studying a time capsule from the past. The Phaistos Disc, which was discovered in 1908 and is thought to date to around 1700 BC, is a circular piece of fired clay stamped with 45 distinct symbols. This code is still unresolved. It inspires the participants of this project to translate current concerns — political, economic, ecological, cultural, or social challenges — into collections of 45 unique symbols. Design methodologies are used as a mode of inquiry to develop ethnographic visual narratives that are subjective, stimulating, and capture visual traces of the Anthropocene.

LAU'S CREATIVE WRITING INITIATIVE PROMOTES PEACE AND INCLUSION

Our department of Communication, Arts and Languages has been celebrating the 10th anniversary of its flagship [Creative Writing Competition](#). This competition provides a platform for all LAU students to express themselves freely.

This initiative promotes peaceful and inclusive societies for sustainable development. The competition is open to all LAU students, providing an equal opportunity for everyone to participate, thereby fostering inclusive societies. The Creative Writing program has also been revamped with new courses like Life Writing and Illness Writing. These courses are open to all students at LAU, ensuring equal opportunity for all students to learn and grow.



ANTI-CORRUPTION FOR MORE ACCOUNTABLE INSTITUTIONS

Electrical engineering student and Middle East Partnership Initiative (US MEPI) Gender Scholar, [Pia Kattoura's involvement in research on gender-inclusive](#) public sectors and her presentation represent a significant contribution to peace, justice and strong institutions. By delving into the intricacies of anti-corruption reform, her work addresses the foundation of transparent and accountable institutions, which are essential for achieving peace, justice, and strong governance. Kattoura's work on anti-corruption will foster integrity and accountability within public sectors, ultimately leading to fair and just societies.



FOSTERING SUSTAINABLE GENDER EQUITY

The [Arab Institute for Women](#) and the [US Middle East Partnership Initiative Tomorrow's Leaders Gender Scholars Program \(MEPI-TLS\)](#) at LAU hosted an end-of-year conference, titled [MEPI-TLS Scholars for Sustainable Gender Equality](#). The event highlighted the importance of advocating for sustainable gender equity, with a particular focus on gender-responsive climate action. It underscored the need to ensure inclusivity, representation, and empowerment of women in environmental decision-making processes. The intersection between gender equity, social justice, and effective climate action, contributes to the broader objectives of fostering equitable and just societies while addressing environmental challenges.

EMPOWERING WOMEN AND THE YOUTH WITH MEDIA LITERACY

The MDLAB 2022 initiative focuses on empowering women and youth through media literacy by providing training and resources to enhance media literacy skills. This not only enhances their ability to critically engage with information but also fosters a more informed and inclusive society. It highlights the crucial role of education and capacity-building in promoting strong, just, and inclusive institutions.

GOAL

17

PARTNER- SHIPS FOR THE GOALS

17 PARTNERSHIPS
FOR THE GOALS



*Strengthen the means
of implementation
and revitalize the global
partnership for sustainable
development*



NASAD ACCREDITATION

LAU's National Association of Schools of Art and Design (NASAD) accreditation ensures that LAU students have access to high-quality art and design education that meets the highest international standards.

The accreditation process entails a successful partnership between a Lebanese university and an international organization which helps to build capacity and promote innovation in Lebanon's art and design sector. In addition, it promotes sustainable development in Lebanon by providing students with the skills and knowledge they need to create innovative and sustainable designs.

SUCCESS AT DUBAI LYNX: PARTNERSHIP WITH THE CREATIVE INDUSTRIES

LAU's success at the Dubai Lynx Awards is a result of a strong partnership between the university and creative industries. LAU's communication and design programs prepare students for careers in such industries, and the university maintains close ties with leading agencies and companies in the sector. These partnerships ensure that LAU students have access to the latest trends and developments, and that they are well-prepared for the challenges of the modern workplace.

The Dubai Lynx Awards are among the most prestigious advertising awards in the Middle East and North Africa, and LAU students took home a total of 13 awards, including three gold, five silver, and five bronze awards.

LAU's partnerships with the private sector are helping to build capacity and promote innovation which is a major driver of economic growth and job creation.

MEPI'S TOMORROW'S LEADERS – GENDER SCHOLARS PROGRAM

Pia Kattoura's research on gender-inclusive public sectors, particularly her contributions to anti-corruption reform, by actively participating in the Middle East Partnership Initiative (US MEPI) and collaborating with leaders in this field, fostered partnerships and cooperation for sustainable development. Kattoura's involvement in research and her presentation at the end-of-year conference indicate a commitment to working together with various stakeholders to address corruption and enhance public sector inclusivity.

IN COLLABORATION WITH ARTSCOOPS AND DOZENS OF ARTISTS OVER \$1 MILLION RAISED

ArtsRising online auction, our first-ever virtual fundraising event, was held to raise donations for the LAU Emergency Financial Aid Fund in support of students who were struggling to afford their tuition due to the ongoing economic crisis in Lebanon. This event was held in collaboration with Artscoops. Alumni, faculty artists and friends of LAU came together to donate in aid of students whose education is at risk.

PARTNERING WITH Z. MOUKAHAL CHARITABLE FOUNDATION

The Z. Moukahal Charitable Foundation has partnered with LAU to provide financial assistance and mentorship to Lebanese students. This partnership is helping to ensure that all young people in Lebanon have access to quality education, regardless of their socioeconomic background.

It is also helping to promote social cohesion and the formation of a more inclusive and equitable society. The foundation provides students with access to resources and training that help them to develop their skills and knowledge.

FULL GRADUATE SCHOLARSHIPS

LAU is offering full graduate scholarships to students from all socioeconomic backgrounds through partnerships with the U.S.-Middle East Partnership Initiative (MEPI).

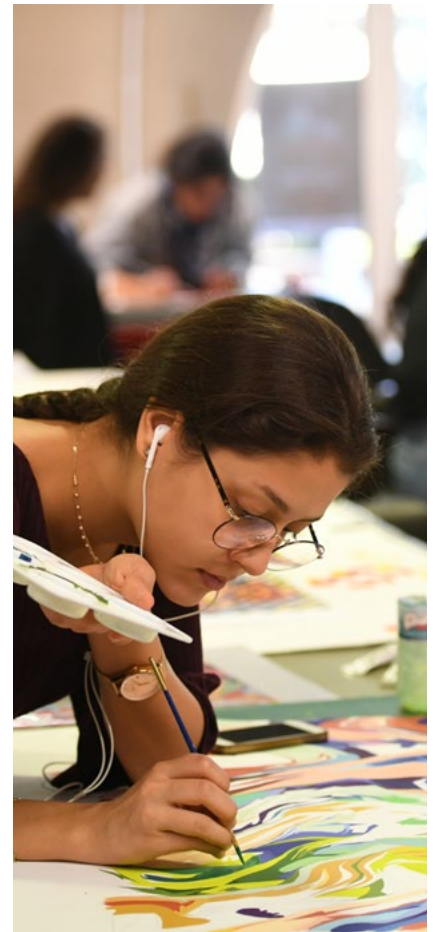
By partnering with other organizations to offer full graduate scholarships, LAU is able to help a wider range of students achieve their educational goals.

COLLABORATION WITH CALOUSTE GULBENKIAN FOUNDATION

A collaboration between LAU and the Calouste Gulbenkian Foundation in Portugal, has provided funding for an LAU project aimed at supporting Armenian schools. The funding not only highlights a commitment to educational initiatives but also underscores the importance of forming cross-border partnerships to advance the shared global agenda of providing quality education and enhancing access to learning opportunities.

LAU AND NYU TISCH COLLABORATE ON THEATRICAL PRODUCTION

A noteworthy partnership between LAU and NYU Tisch for a collaborative theatrical production exemplifies international cooperation and the sharing of educational resources. Through this collaboration, students from both institutions benefit from diverse learning experiences and cultural exchange, promoting a sense of global interconnectedness. The program not only enriches educational opportunities but also aligns with the broader objective of fostering partnerships for sustainable development, fostering a culture of collaboration that transcends geographical boundaries.



LEBANESE AND US STUDENTS COLLABORATE ON INNOVATIVE SOLUTIONS: OVERCOMING COMMUNICATION CHALLENGES

In a [partnership between LAU and Boise State University](#), students from two nations have come together to address global challenges and promote quality education. This initiative, funded by the US Embassy in Lebanon, leveraged technology to bridge the gap, overcoming communication challenges through a virtual exchange program. Through collaborative projects, these students learned the art of cross-cultural dialogue, honing skills that no textbook can teach.

The solutions they devised were not only innovative but also deeply impactful, with one project focusing on wildfire prevention and another aiding in the safe return to in-person learning during the COVID-19 pandemic.



CREATIVE EDUCATION AND CULTURAL EXCHANGE

The partnership with "[The Phaistos Project— 45 Symbols](#)" holds great significance for LAU students as it offers a unique opportunity for creative exploration and critical thinking. This project, inspired by the enigmatic Phaistos Disc and the Voyager Golden Records, encourages participants to translate current concerns, such as political, economic, ecological, cultural, and social challenges, into collections of 45 unique symbols. By using design methodologies as a mode of inquiry, the project allows students to develop ethnographic visual narratives that capture the essence of the Anthropocene era.

In a time of global transformations, the project challenges students to redefine their design practices and their role in socio-political discourse. It prompts them to explore new ways of understanding design as a mode of inquiry and to reflect on their methodologies and research abilities. This initiative opens the door to self-directed observations, experiments, and speculations that provide fresh perspectives on the way we live.

The partnership's importance lies in its ability to foster creativity, critical thinking, and a deep understanding of design as a tool for communication and reflection. LAU students can engage in meaningful exploration and dialogue, transcending their traditional design boundaries. The Phaistos Project invites them to ponder their messages and narratives, preserving their ideas for future generations, making it a remarkable endeavor in creative education and cultural exchange.

CONFERENCE TO ADVANCE PHARMACY RESIDENTS

The annual pharmacy residency conference hosted by the American University of Beirut Medical Center (AUBMC) is another example of how partnerships can be used to achieve sustainable development goals. The conference brought together residents from LAU's School of Pharmacy, LAU Medical Center-Rizk Hospital and AUBMC, as well as faculty and practitioners from a variety of institutions. This collaboration allowed participants to share their knowledge and expertise, and to work together to advance pharmacy practice.

[The conference](#) was also a valuable opportunity for pharmacy residents to network with other professionals in the field.



LIBERAL EDUCATION COURSES MAP TO THE UN SDGS

In 2015, the Member States of the United Nations collectively embraced the 2030 Agenda for Sustainable Development, which comprises 17 Sustainable Development Goals (SDGs). The SDG goals acknowledge that eradicating poverty and addressing various forms of deprivation must be pursued in conjunction with efforts to enhance healthcare and education, mitigate inequality, and promote economic advancement, all while confronting the challenges of climate change and preserving our precious oceans and forests.

LAU was among the first universities in the world to mainstream the SDGs into the liberal arts and sciences curriculum (LASC). The LASC includes several key components:

- i. Introduces all students to the United Nations Sustainable Development Goals (SDGs) and enables them to explore how science contributes to achieving these goals through a mandatory core, the *Change Makers* series;
- ii. Enhances students' scientific literacy through a series of *Digital Cultures* courses.

The LASC engages the students and helps them to establish a sustainable connection between humanity and the planet. The approach is grounded on the premise that every student should possess a foundational understanding of the SDGs and their fundamental principles, which can be applied in their careers and personal lives.

Number of LAS courses that relate to each of the United Nations 17 SDGs

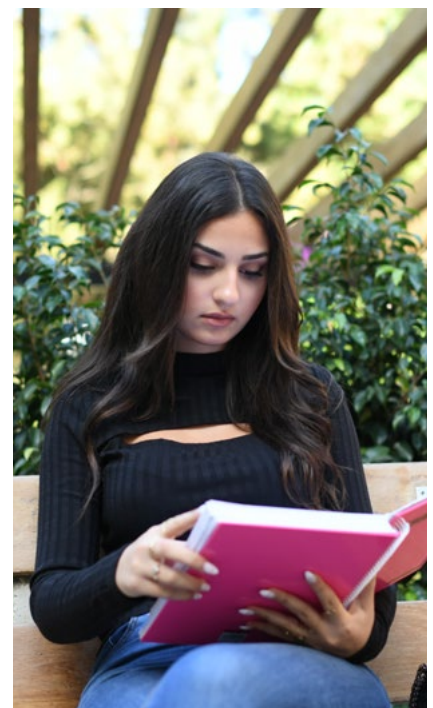


PARTNERING WITH LEBANESE CUSTOMS FOR ACCESS AND EXCELLENCE

A **strategic partnership** with the Lebanese Customs focuses on expanding educational access and quality. LAU extends its support by offering tuition grants to customs officers, members, retirees, as well as their spouses and children, ensuring that they have the opportunity to benefit from LAU's extensive array of undergraduate, graduate, and continuing education programs. Simultaneously, the Customs contributes to students' practical knowledge by providing internships, fostering experiential learning in a real-world setting. This collaboration also opens up possibilities for academic conferences, promoting knowledge-sharing and academic excellence.

SOAS SUMMER CAMPS: FOSTERING PARTNERSHIPS FOR EDUCATION AND SCHOLARSHIPS

Through its summer camps at LAU, the School of Arts and Sciences provided high-school students with a university-level education experience. This emphasizes the importance of scholarships as incentives for students. This initiative fosters collaborations between educational institutions and students, ultimately supporting students in achieving their educational goals and contributing to the development of knowledge and skills needed for the future.



PARTNERSHIPS FOR SUSTAINABLE DEVELOPMENT

LAU is committed to promoting partnerships for **sustainable development**. The university has established partnerships with a variety of organizations, including government agencies, businesses, non-governmental organizations, and other universities, to advance its sustainability goals and support the Sustainable Development Goals.

Some of LAU's key partnerships related to the SDGs include:

- Partnership with the Lebanese Ministry of Environment to develop and implement a national sustainability strategy.
- Partnership with the United Nations Development Programme (UNDP) to implement a number of SDG-related projects, such as a project to promote renewable energy in Lebanon and a project to support sustainable agriculture practices.

- Partnership with the Association of Energy Engineers (AEE) to provide training and certification programs on energy efficiency and renewable energy.
- Partnership with the Lebanese Business Council for Sustainable Development to promote sustainable business practices in Lebanon.
- Partnership with the Association for the Protection of Green Spaces in Lebanon (APGS-L) to protect and restore green spaces in Lebanon.
- Partnership with the American University of Beirut (AUB) to promote sustainability in Lebanon through joint research projects and educational programs.

LAU's partnerships for sustainable development are helping the university to make a real difference in the lives of its students and staff, and in the environment.

CLIMATE RESILIENCE AND FOOD SECURITY

THE ARCTIC WALK

Michael Haddad, who serves as the Regional Goodwill Ambassador for the United Nations Development Programme (UNDP), successfully concluded his **Arctic Walk** for Climate Resilience and Food Security. The Arctic Walk for Climate Resilience and Food Security is not merely a symbolic endeavor; it represents a resounding call to action to confront the ever-pressing global climate emergency.

Haddad, who is paralyzed from the chest down, will perform his odds-defying symbolic walk with the aid of a specially designed exoskeleton devised by a scientific team of engineers and neurologists from LAU and the American University of Beirut.

The project's objective is to deliver seed samples from Arab countries to the Svalbard Global Seed Vault, which can indirectly promote access to genetic resources for crop diversity.

The collaboration with organizations like the UN Food and Agriculture Organization (FAO) and the International Center for Agricultural Research in the Dry Areas (ICARDA) exemplifies international cooperation.

FOSTERING SUSTAINABLE ENERGY SOLUTIONS: LAU'S VIP+ STARTUP COMPETITION

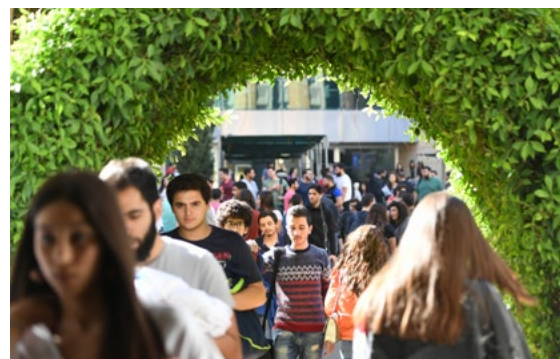
We took a significant step towards fostering innovative solutions in sustainable energy through **our VIP+ Innovation Showcase and Startup Competition** in 2021. The competition, funded by the US Middle East Partnership Initiative (US MEPI), embraced the Vertically Integrated Project (VIP) framework designed by Georgia Institute of Technology. This framework allows student teams to collaborate on groundbreaking projects across disciplines, incorporating an entrepreneurship component to amplify their impact and align with the MEPI Tomorrow Leaders' College to Work Pipeline (TLP).

Ten teams presented their startups at the first LAU VIP+ Innovation Showcase and Startup Competition, demonstrating a commitment to innovation and entrepreneurship. Among the winners were Cedar BioDiagnostics and Takatcom, startups that aim to tackle issues related to kidney health and decentralized energy solutions, respectively. These startups contribute directly to SDG 7 by promoting affordable and clean energy.

LAU'S INTERDISCIPLINARY RESTRUCTURE

School of Arts and Sciences underwent a **restructure to accommodate interdisciplinary education**. The new structure aims to increase student employability and prepare them to become changemakers. The school consolidated various departments and created a new Department of Liberal Education that services the entire LAU community.

This restructure promotes collaboration across disciplines, enhancing the multidisciplinary aspect of the school. It also fosters partnerships with faculty and industry, creating opportunities for innovation and job creation. The restructure aims to boost economic growth and reduce inequalities within Lebanon, contributing to the achievement of the Sustainable Development Goals.



PARTNERSHIPS WITHIN THE EDUCATIONAL AND ENGINEERING SECTORS

The World Robot Olympiad in Lebanon brought together various stakeholders, including students, educators, schools, and supporting institutions. This collaborative effort encouraged teamwork and fostered partnerships within the educational and engineering sectors. Through shared efforts and support, the event achieved its mission, demonstrating the importance of partnerships to reach common goals.

Director-General Imad Al Achkar, the Municipality of Byblos, LAU, LIV, IPT, Dr. Noel Maalouf, Rasha Ghabash, Rabih Baalbaki, Chadi Al Maasarani, Caritas Youth, volunteers and media contributed to this achievement.

HARASSMENT POLICY

Our Harassment Policy emphasizes the importance of cooperation and collaboration between various stakeholders, including university officials, staff, students, and relevant authorities. This collaboration is essential for addressing harassment effectively and creating a safe and inclusive environment. In the document we highlight the need for data collection and reporting on harassment cases. It also stresses the importance of training

PARTNERSHIPS FOR WOMEN'S LEADERSHIP IN TIMES OF CRISIS: THE 3RD GLOBAL CONVERSATION IWD 2021

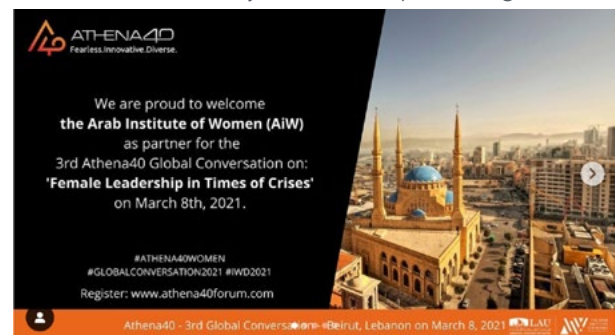
The 3rd Global Conversation on International Women's Day in collaboration with the Arab Institute for Women at LAU, which took place in multiple locations, including Beirut, is part of Athena40, a family of initiatives promoting women's empowerment. In Beirut, the panel discussion brought together a diverse range of individuals and organizations, including the Arab Institute for Women, represented by Myriam Sfeir and Lina Abirafeh. This collective effort demonstrated the importance of partnerships in driving discussions and actions related to women's leadership during times of crisis. This initiative fosters collaboration, unites various stakeholders and underscores the significance of addressing gender equality to create more inclusive and equitable societies.

and capacity building for university members. By educating the university community about harassment prevention and resolution, the institution can contribute to a more sustainable and inclusive environment.

We encourage multi-stakeholder partnerships involving the university, students, faculty, staff, and external organizations or authorities. And we promote accountability in addressing harassment cases and ensuring that responsible parties are held accountable.

CELEBRATING WOMEN LEADERS

The United Nations in collaboration with the Arab Institute for Women celebrated women leading change in Lebanon on International Women's Day. This event vividly illustrates the significance of international collaboration and alliances in advancing the cause of gender equality and the empowerment of women. Through the acknowledgment and honoring of women who are driving transformation in Lebanon, the United Nations, not only emphasizes the pivotal role of women in the pursuit of sustainable development, but also cultivates partnerships and collaborative efforts to advance these crucial objectives.



WORKSHOP ON THE WPS INDEX: AIW WITH ESCWA'S REGIONAL CAPACITY DEVELOPMENT

The Regional Capacity Development Workshop on the Women, Peace, and Security Index, organized by the Economic and Social Commission for Western Asia (ESCWA) in partnership with various institutions, brought together ESCWA, the Arab Institute for Women (AiW) at the LAU, the Georgetown Institute for Women Peace and Security (GIWPS), and the Peace Research Institute Oslo (PRIO) to advance the Women's Peace and Security (WPS) Index as a measurement tool. By providing decision-makers with evidence-based measures, the workshop aimed to empower women and promote their autonomy within their communities and societies. The event's focus on the WPS agenda, its wide-ranging impact, and the recognition of the varying thematic priorities across contexts underscore the importance of international cooperation and partnerships.



Lebanese American University
P.O. Box 13-5053
Chouran Beirut: 1102 2801
Lebanon